

# DATA RECOVERY OF THE CSS *GEORGIA*: PRELIMINARY RESULTS

Stephen James

Panamerican Consultants Inc.

SHA Conference 2016

Washington, D.C.



*Savannah*  
DISTRICT



US Army Corps of Engineers  
**BUILDING STRONG®**



# CSS Georgia Site Location

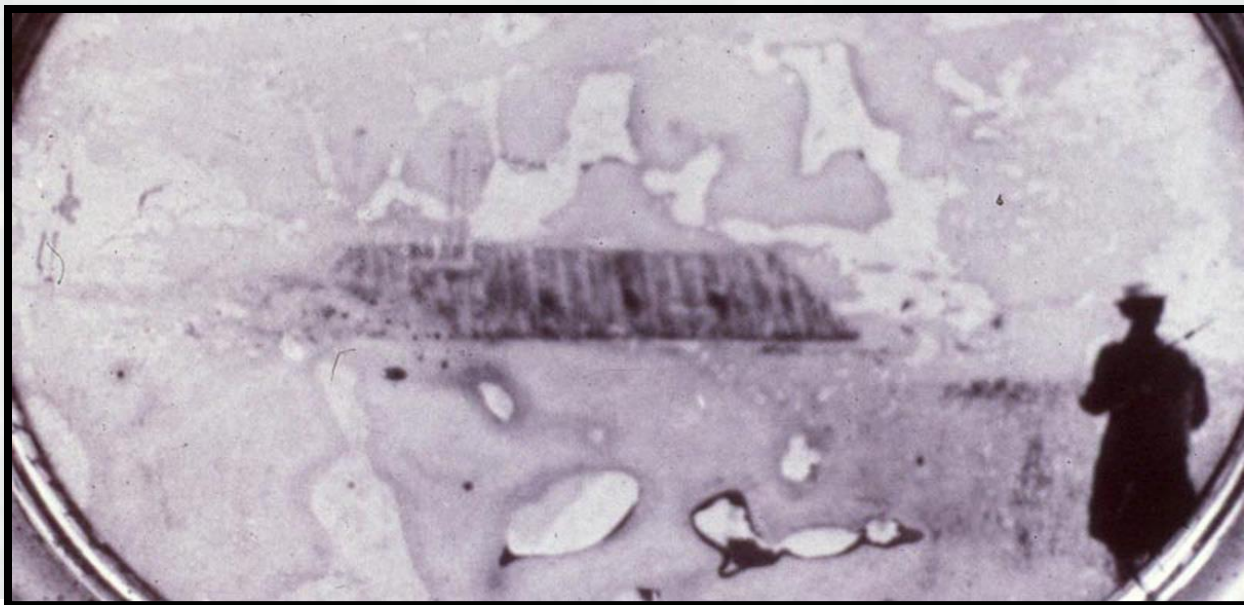
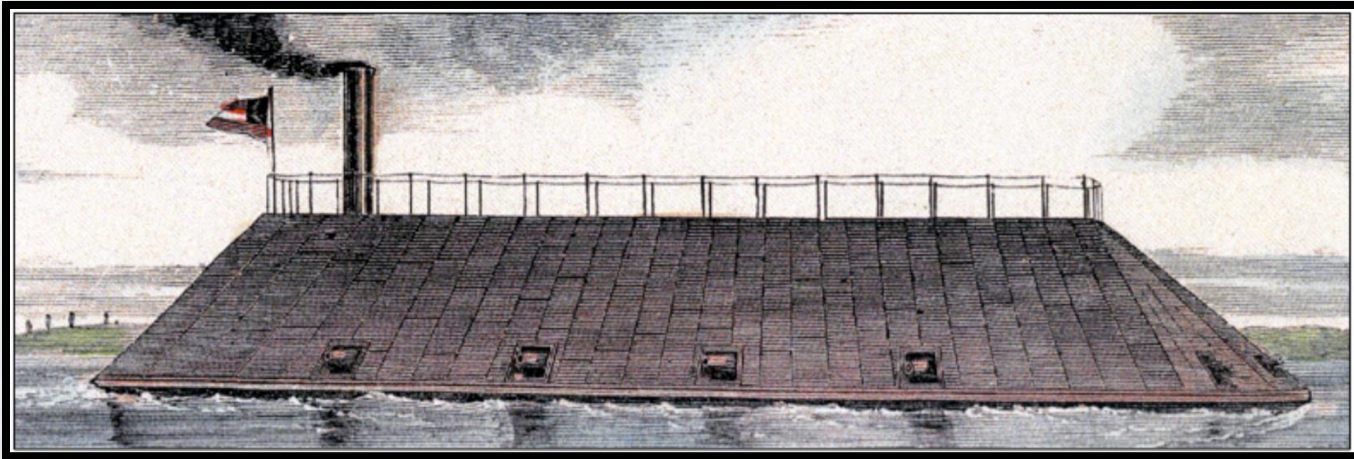


**Wreck site sits within the SHEP channel expansion area.**



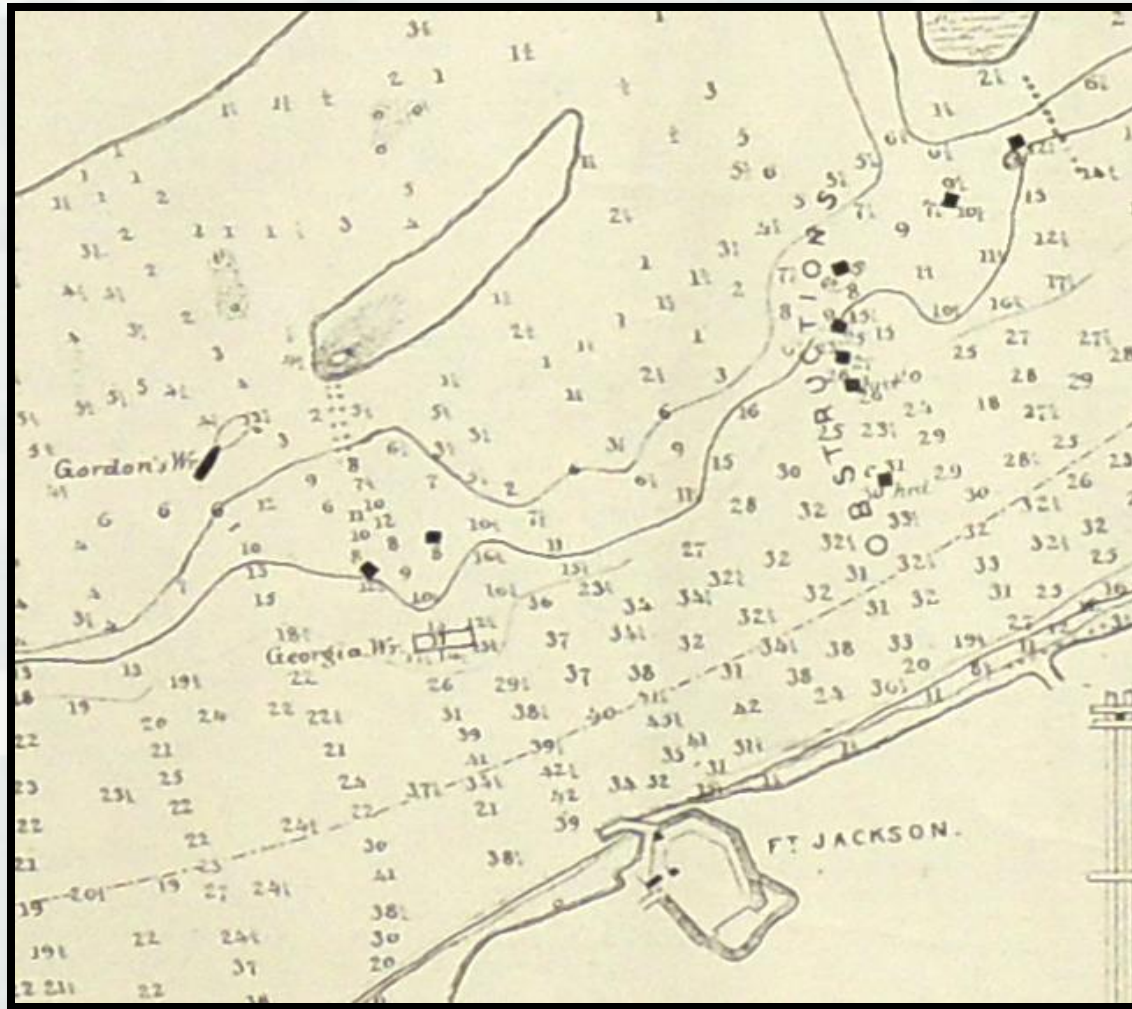
**BUILDING STRONG®**

# Contemporary Lithograph and Photograph (?)



BUILDING STRONG®

# Vessel History

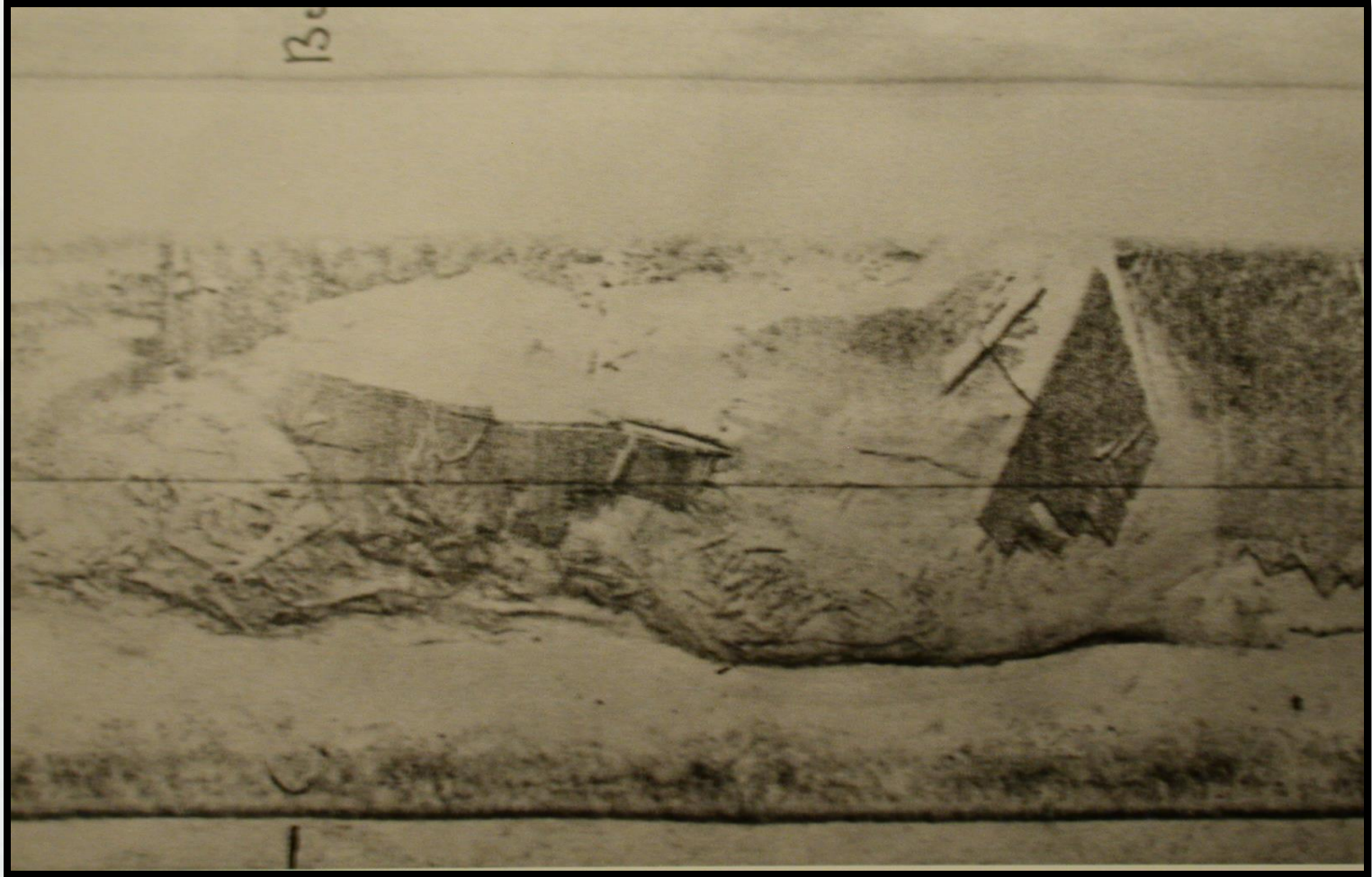


1871 Ludlow Map



BUILDING STRONG®

# Previous Investigations

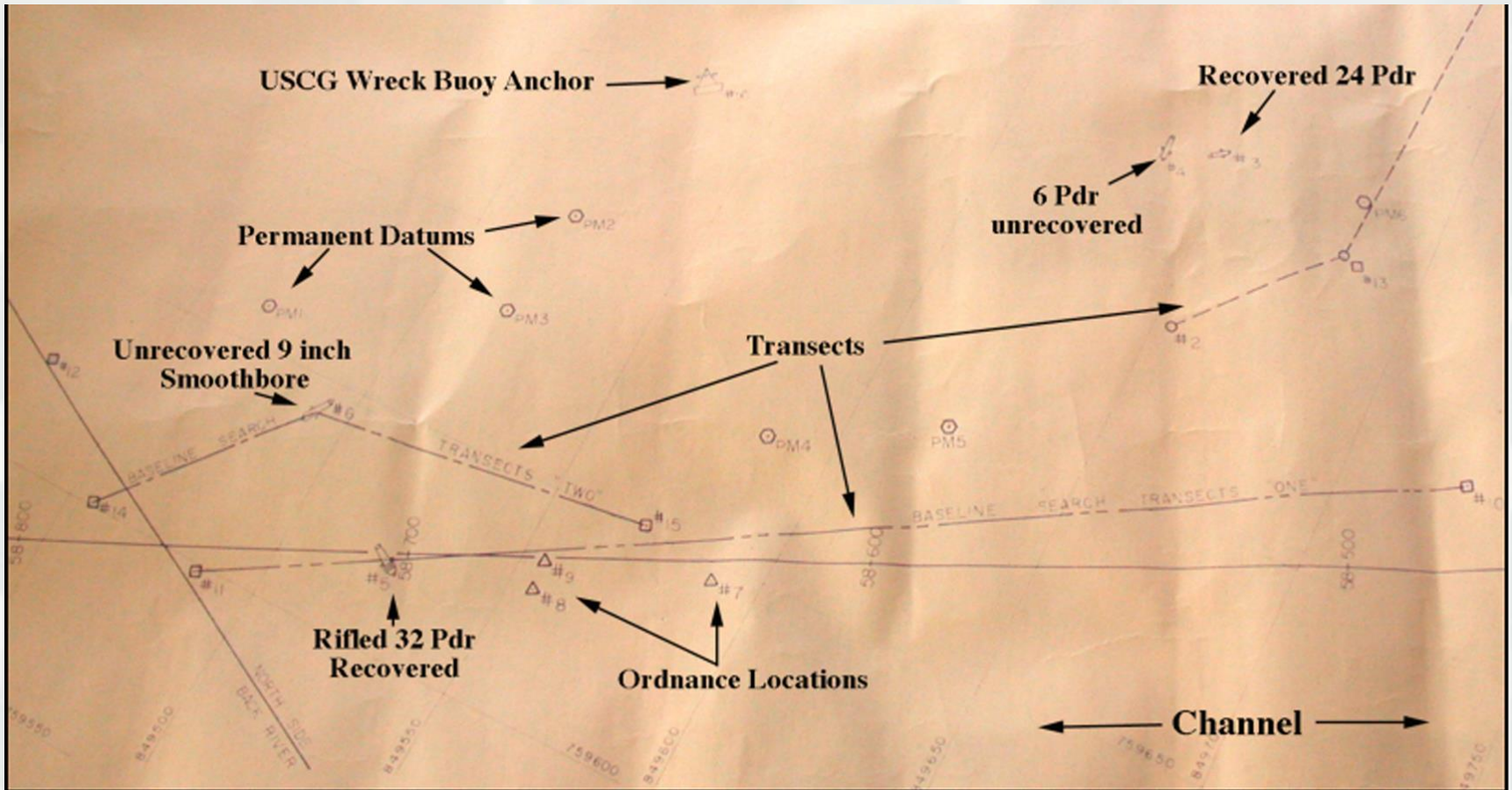


1980 Texas A&M Investigation



**BUILDING STRONG**<sup>®</sup>

# Previous Investigations



1986 Site Plan



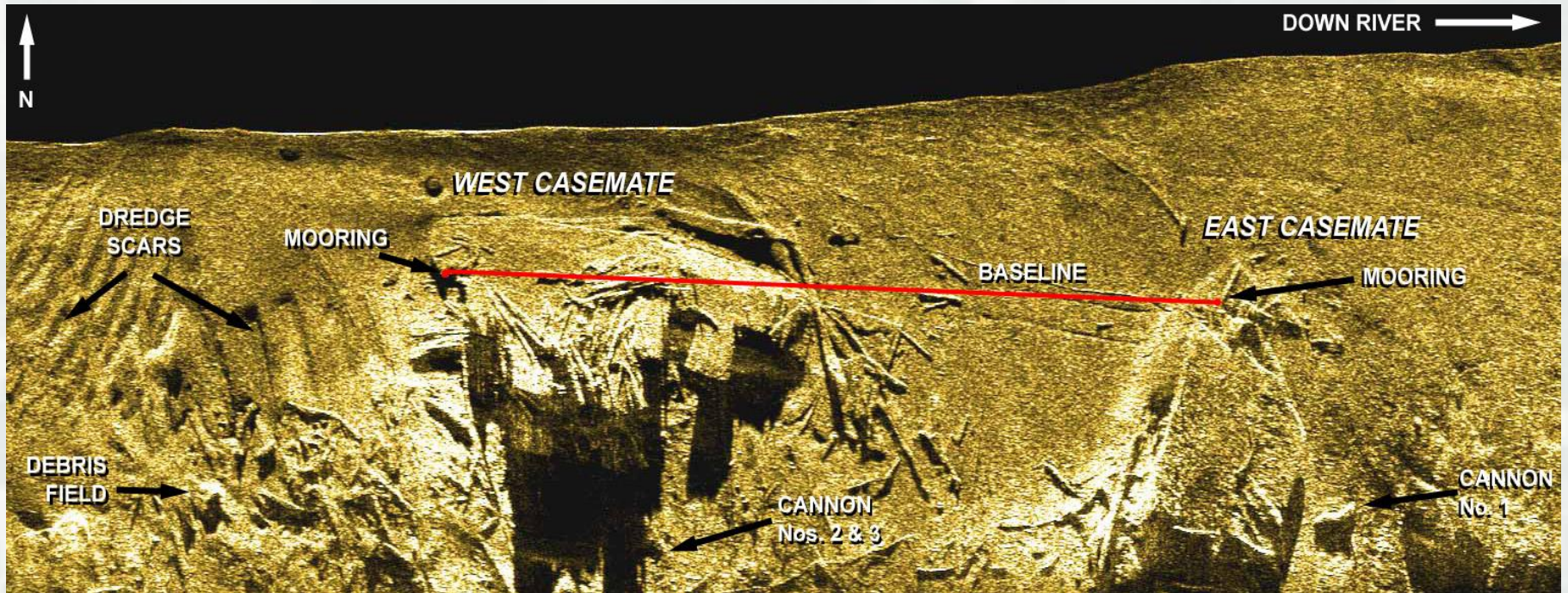
**BUILDING STRONG®**

# Recovered Dahlgren and Brooke Shells



**BUILDING STRONG**®

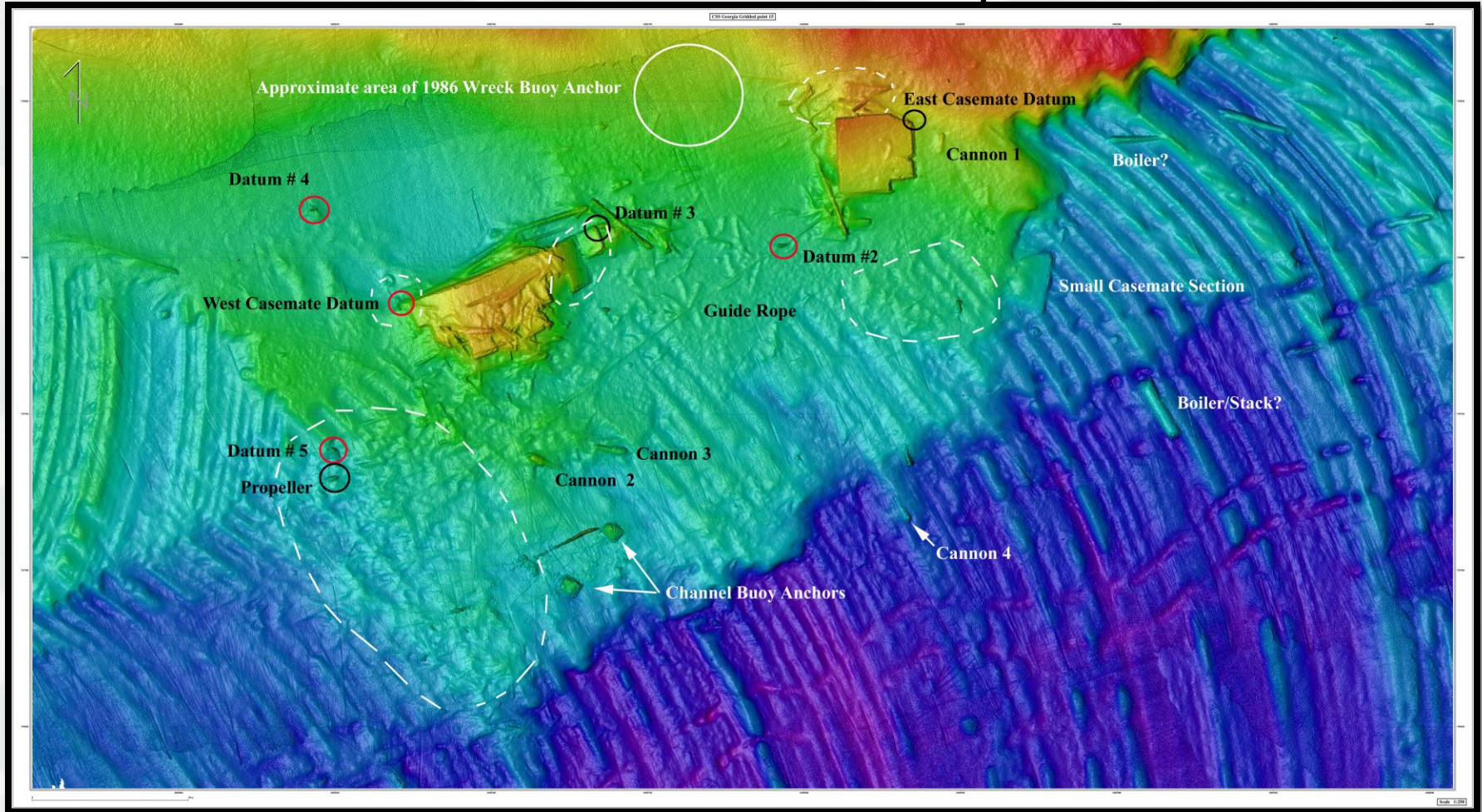
# 2003 Panamerican Investigation - Labeled Sidescan Sonar Image



BUILDING STRONG®

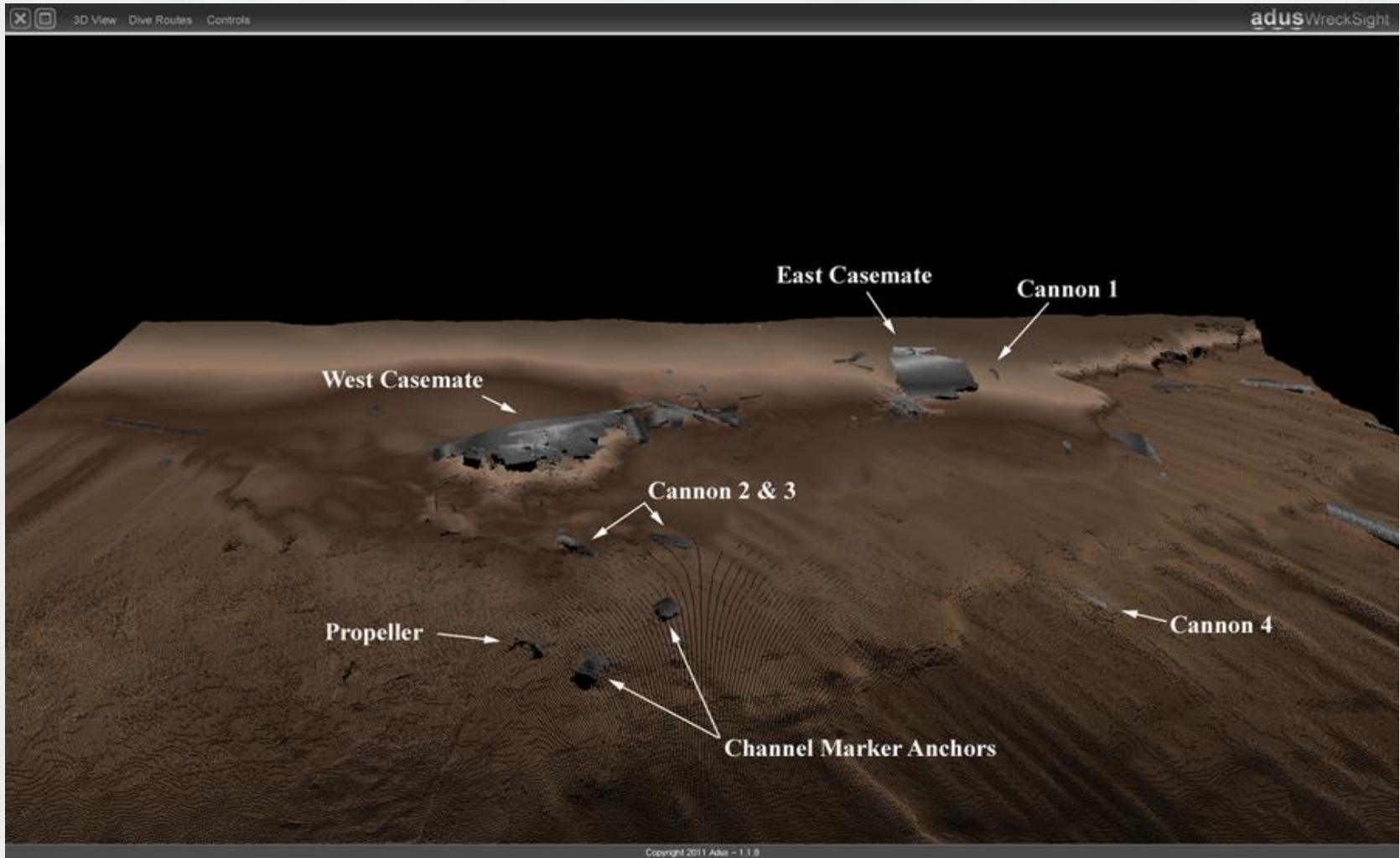


# 2012 High Resolution Multibeam Data Terrain Site Map



**BUILDING STRONG**®

# Multibeam WreckSight Program



**BUILDING STRONG**®

# 2013 Recovery & Integrity Testing



**BUILDING STRONG**®

# U.S. NAVY MOBILE DIVING SALVAGE UNIT (MDSU)



**BUILDING STRONG**®

# Casemate Section Recovery



**BUILDING STRONG**<sup>®</sup>

# Casemate Railroad Armor Integrity Test



**BUILDING STRONG**<sup>®</sup>

# 2015 Archaeological Recovery

## ***PARTICIPATING AND PERMITTING AGENCIES***

- ▶ U.S. Army Corps of Engineers, Savannah District
- ▶ Georgia Ports Authority
- ▶ U.S. Navy, Naval History and Heritage Command (NHHC)
- ▶ Georgia State Historic Preservation Officer
- ▶ South Carolina State Historic Preservation Officer

## ***TEAM MEMBERS***

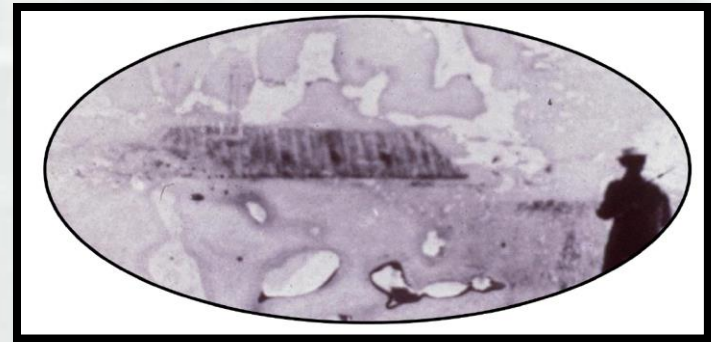
- ▶ Panamerican Consultants, Inc.
- ▶ Dial Cordy & Associates, Inc.
- ▶ U.S. Navy, Supervisor of Salvage (SUPSALV)
- ▶ Donjon Marine
- ▶ U.S. Navy, Mobile Diving Salvage Unit 2 (MDSU)
- ▶ Conservation Research Laboratory at Texas A&M University (CRL)



**BUILDING STRONG®**

## ***PROJECT PHASES / OBJECTIVES***

- **Objective 1—Archaeological Site Assessment & Mapping**
- **Objective 2—UXO Recovery**
- **Objective 3—Large Artifact Recovery**
- **Objective 4—Casemate Recovery**
- **Objective 5—Mechanized Clearance**
- **Objective 6—Reburial of Non-Significant Artifacts**
- **Objective 7—Artifact Conservation**
- **Objective 8—Report Preparation**

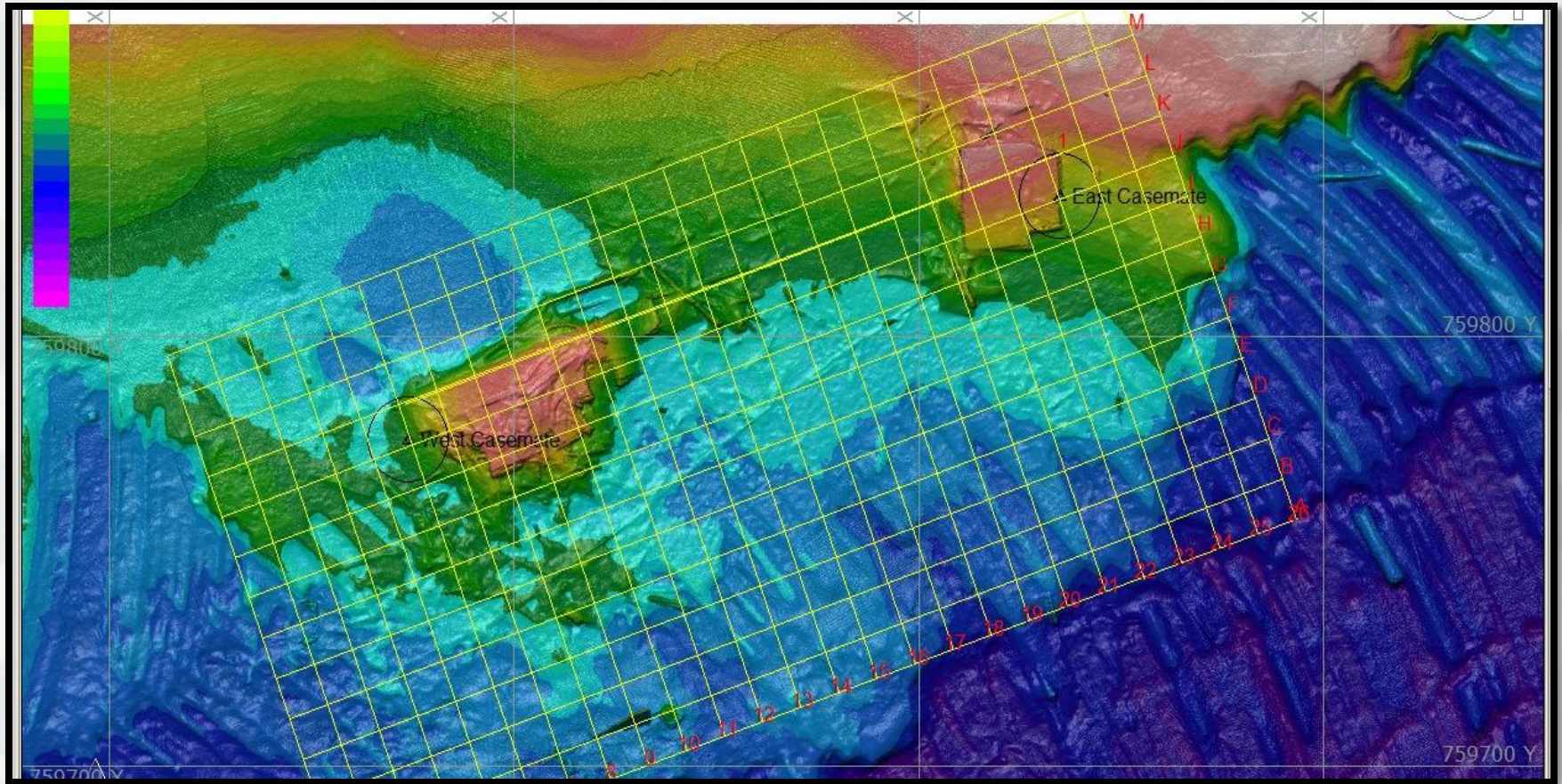


**BUILDING STRONG®**



# Site Mapping with Electronic Grid And USBL

January 6 to June 1



**BUILDING STRONG®**

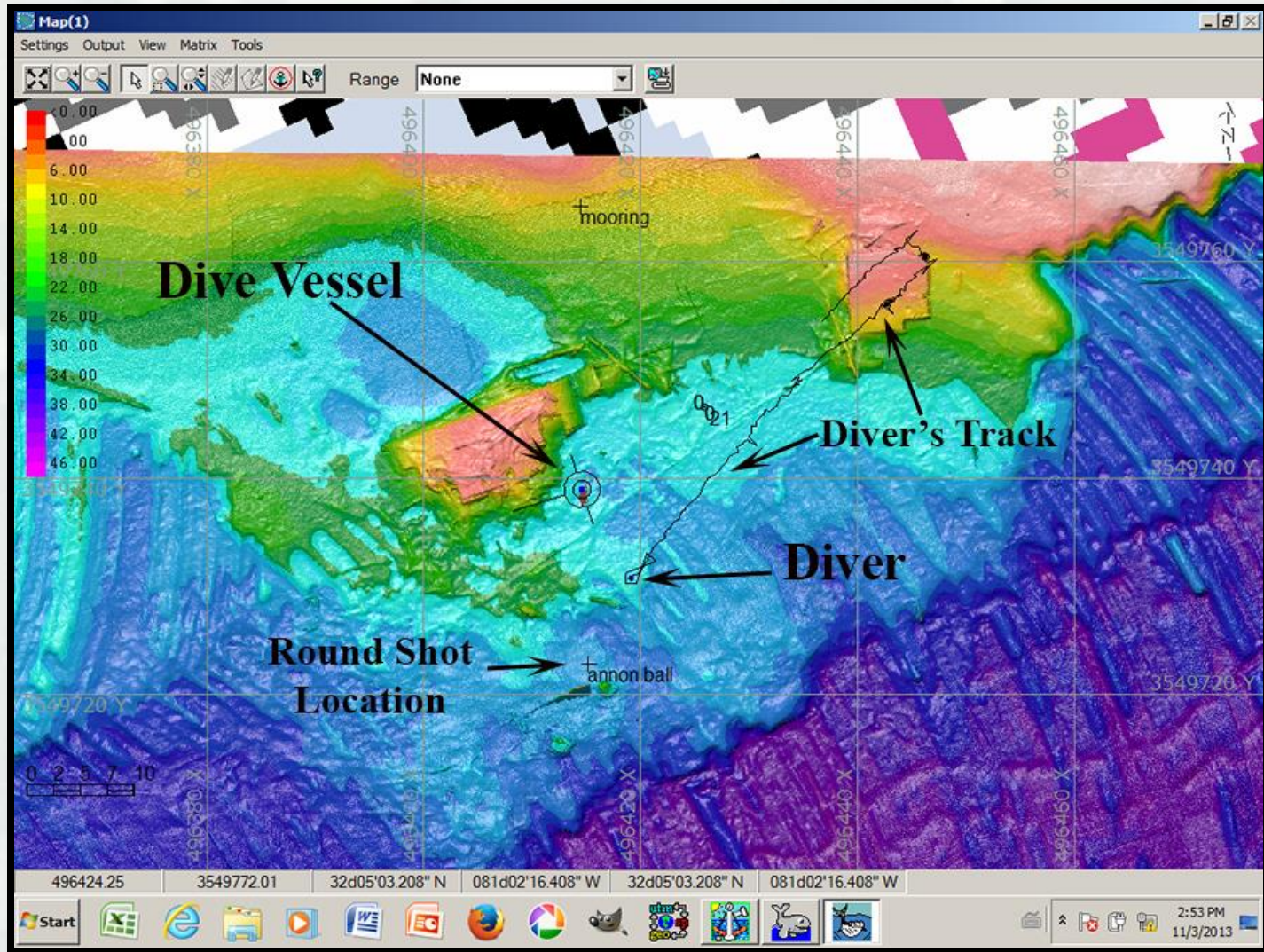


**BUILDING STRONG®**



**BUILDING STRONG®**

# Diver Tracking System



**BUILDING STRONG**<sup>®</sup>

# Site Mapping & Small Artifact Recovery

**CSS Georgia Data Recovery Project 2015**

**Artifact Recovery Form**

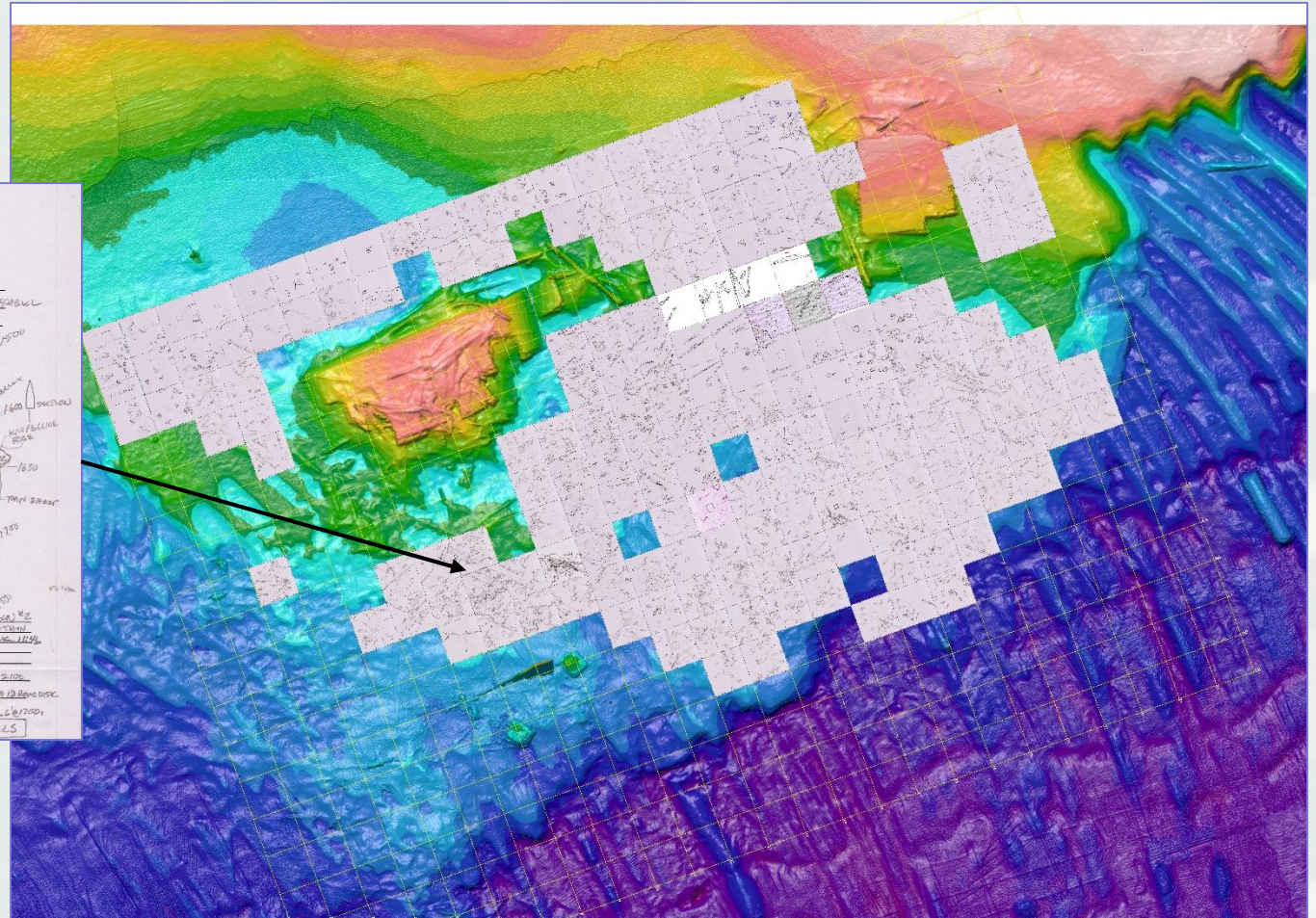
Grid Square B-D Date JANU 15 Recorder ADW

Dive # 30 Tide LOW/RISING Depth 48 on compass

Diver DAF Sediment \_\_\_\_\_

**Comments** 10:50 bottom HIGH RISE TIDE. 14' 11" (1.5m) \* 2  
 15:30 11:20 POSSIBLE TANK PLATE (see below drawing)  
 AND HANDLE IN TANK. SAW WIRE TO TANK. DIRT AND SAND ONLY.

**Assigned Artifact Tags** 1000 521, 6" W/ 1" 1/2 DIA 3" 9" FERRITE 4/2 200  
 1000 521, 2000 1 2000, 2000 2000 2000 2000 2000 4/12 2000 2000  
 2000 2000 2000 2000 2000 2000 2000 2000 2000 2000  
 2000 2000 2000 2000 2000 2000 2000 2000 2000 2000



**BUILDING STRONG®**



**BUILDING STRONG**®

# Trunnion Cap

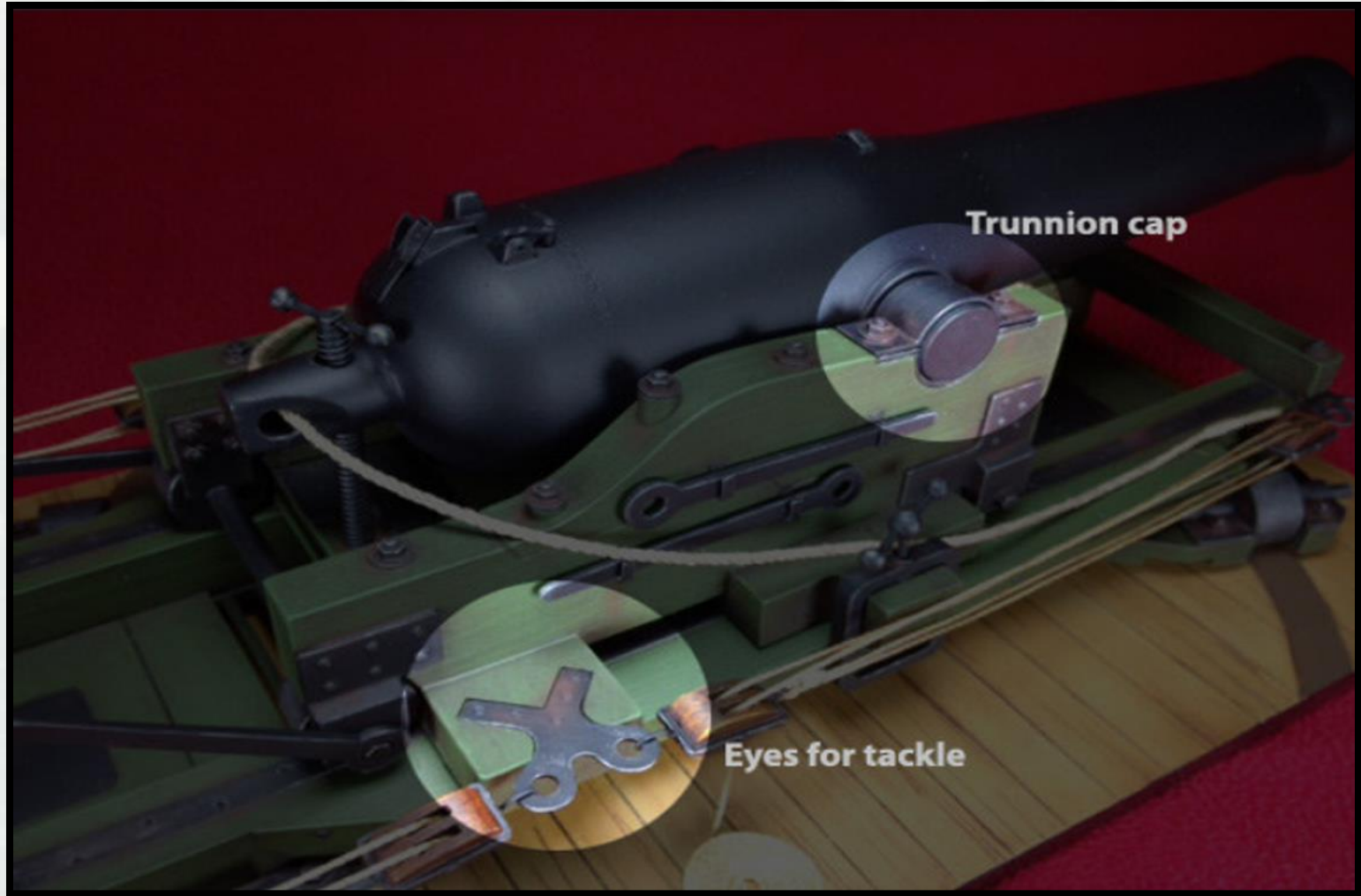


Eyes for Tackle



BUILDING STRONG®

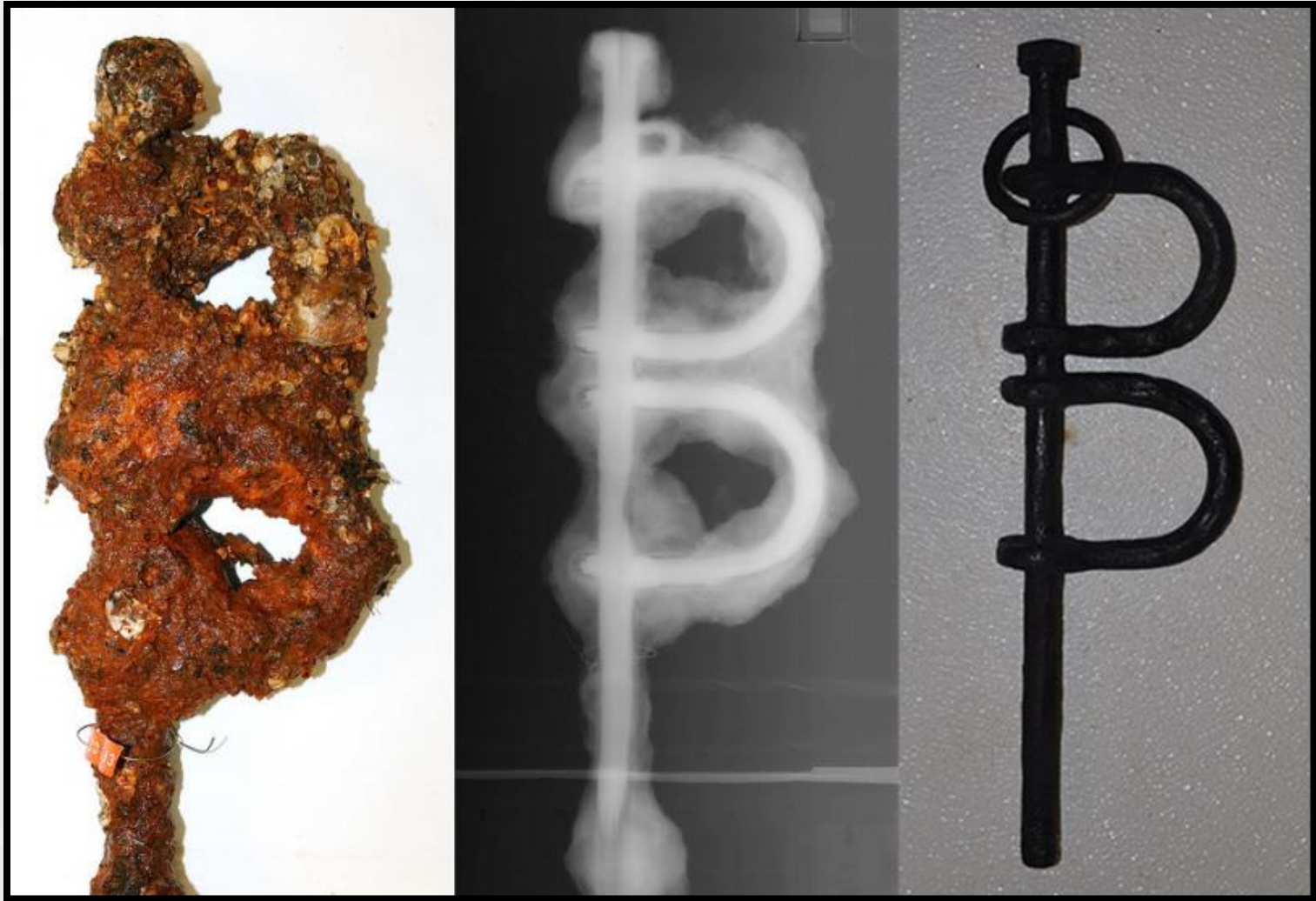
# Gun Carriage with Trunnion Cap & Eyes For Tackle



**BUILDING STRONG**<sup>®</sup>



# Conservation of Recovered Leg Shackles



**BUILDING STRONG**®

# ***HEAVY LIFT / LARGE RECOVERY PHASE***

***BY MUDSU / SUPSALV***

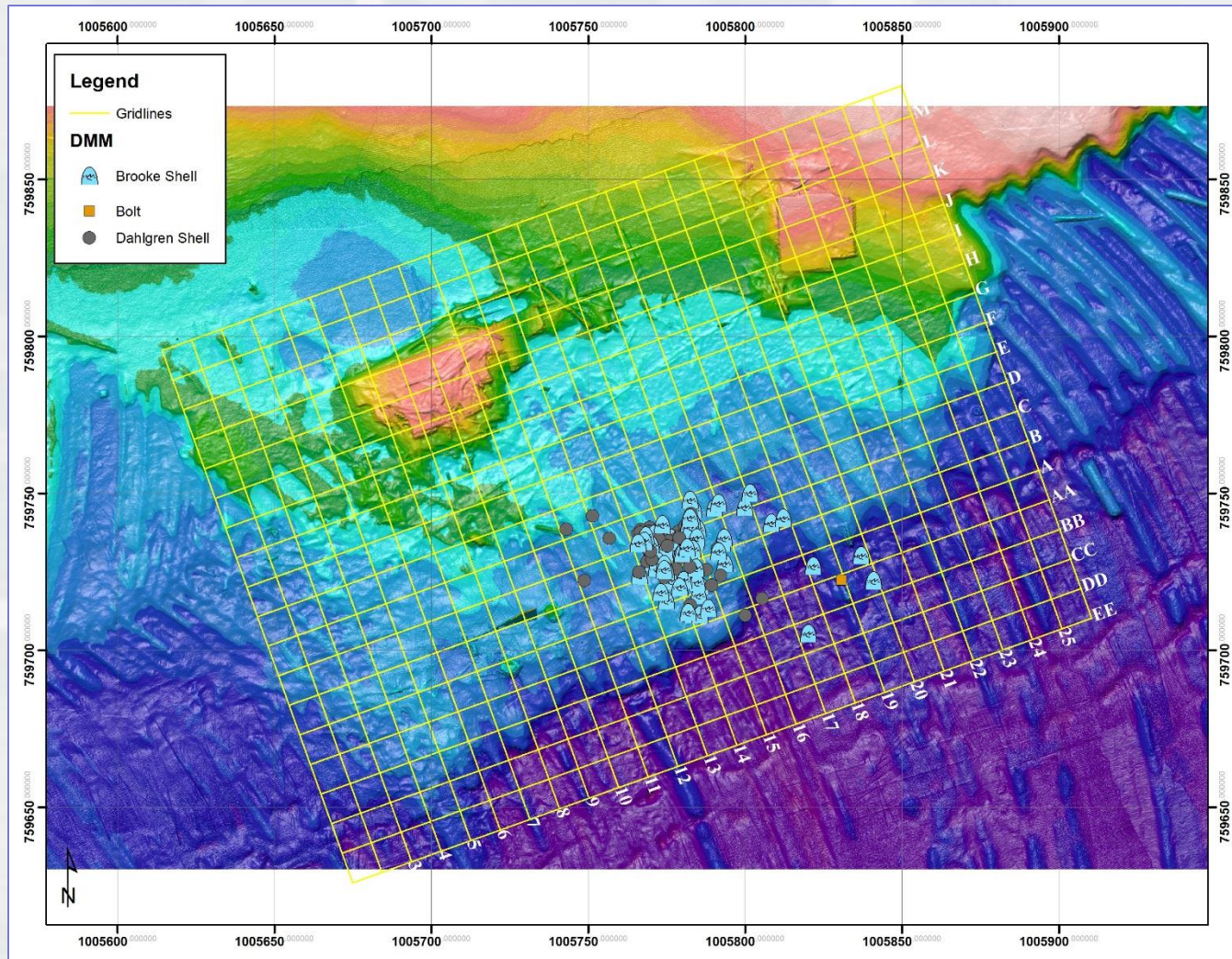
***JUNE 22 TO SEPTEMBER 10***

- **Objective 1—Ordnance Recovery**
- **Objective 2—Large Artifact Recovery**
- **Objective 3—Casemate Recovery**



**BUILDING STRONG®**

# Ordnance Recovery



**BUILDING STRONG®**

# *UXO RECOVERY PHASE*

- **Objective 1—UXO Identification and Recovery**
- **Objective 2—Ordnance Inerting and Transportation**



Figure 53. 9-inch Dahlgren Shell.

Figure 54. 9-inch Dahlgren Shell.

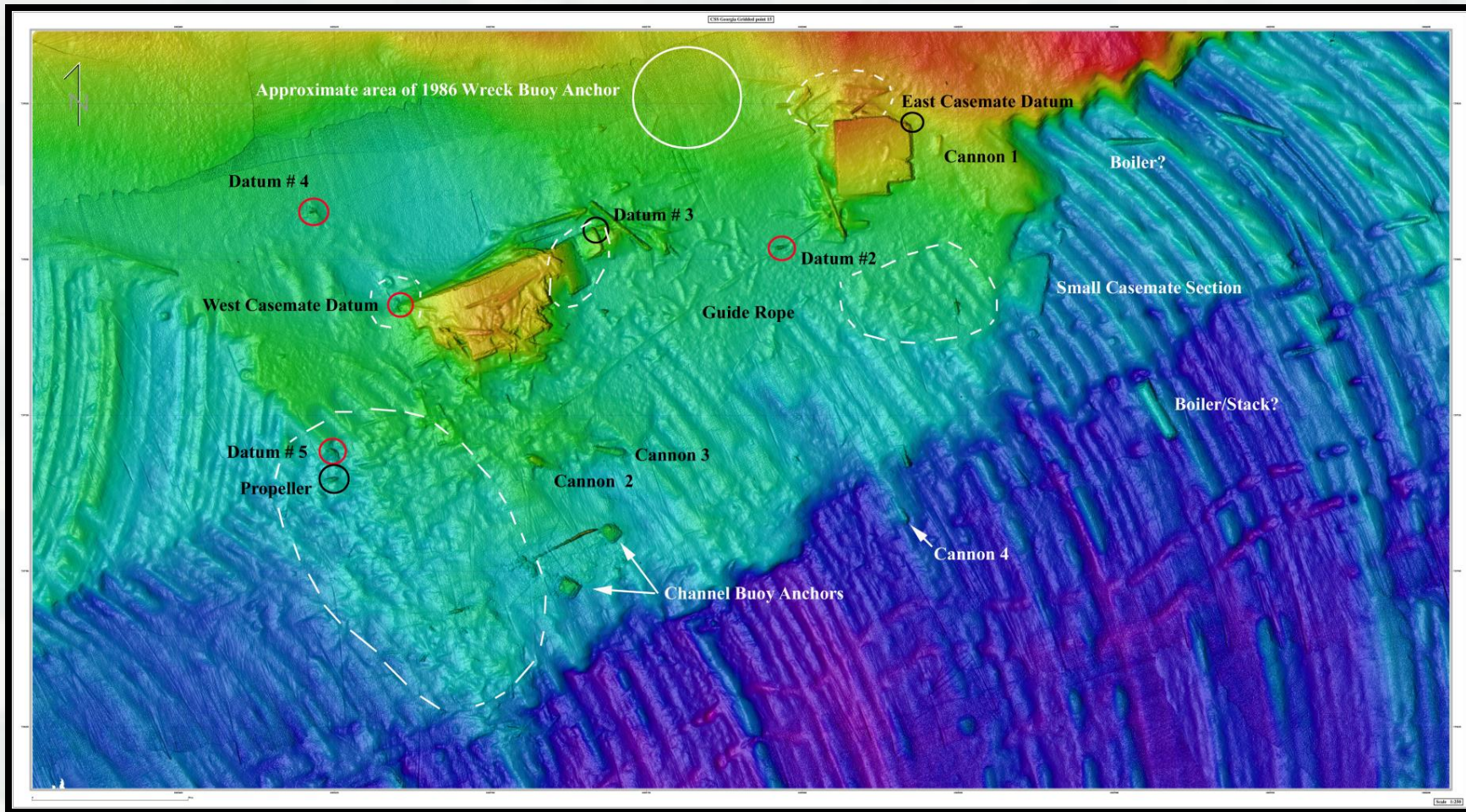


Figure 55. 100-pounder Parrott Shell.



**BUILDING STRONG**

# Cannon Recovery Locations



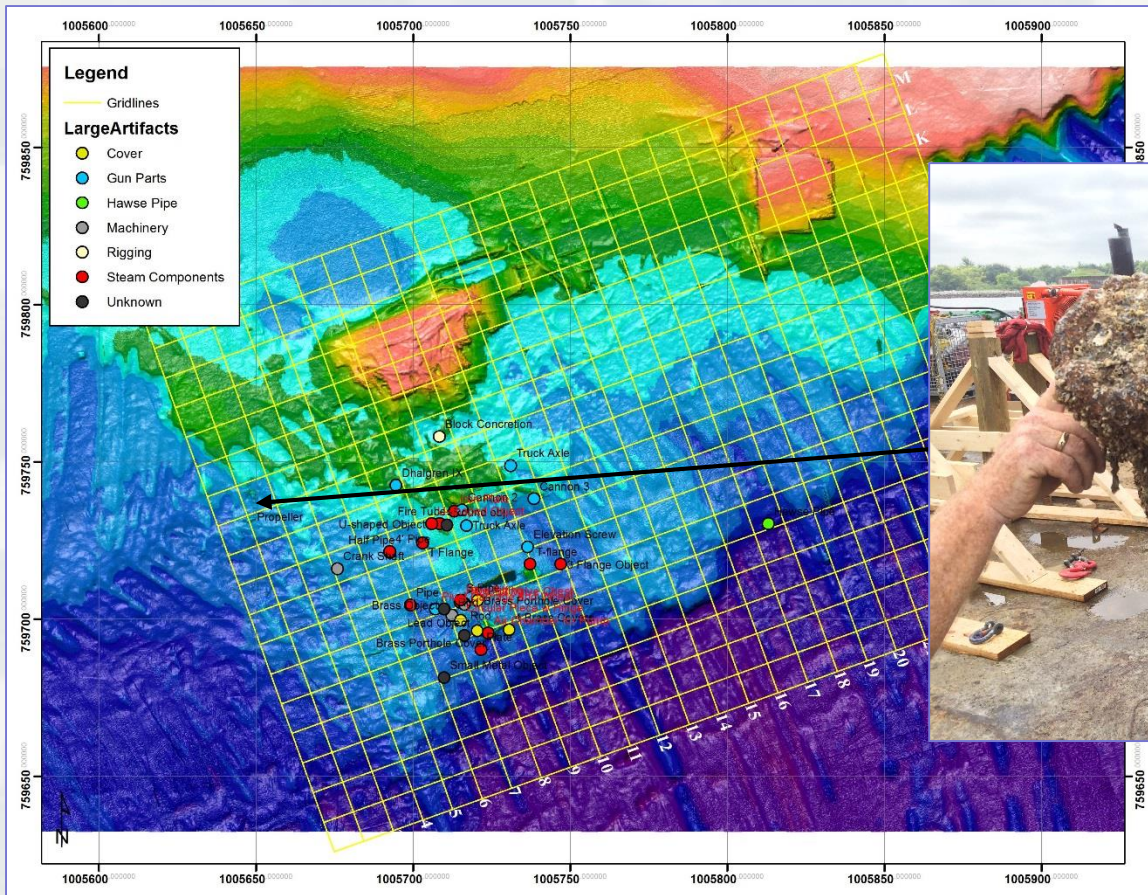
**BUILDING STRONG**®

# Cannon Recovery – IX Inch Dahlgren



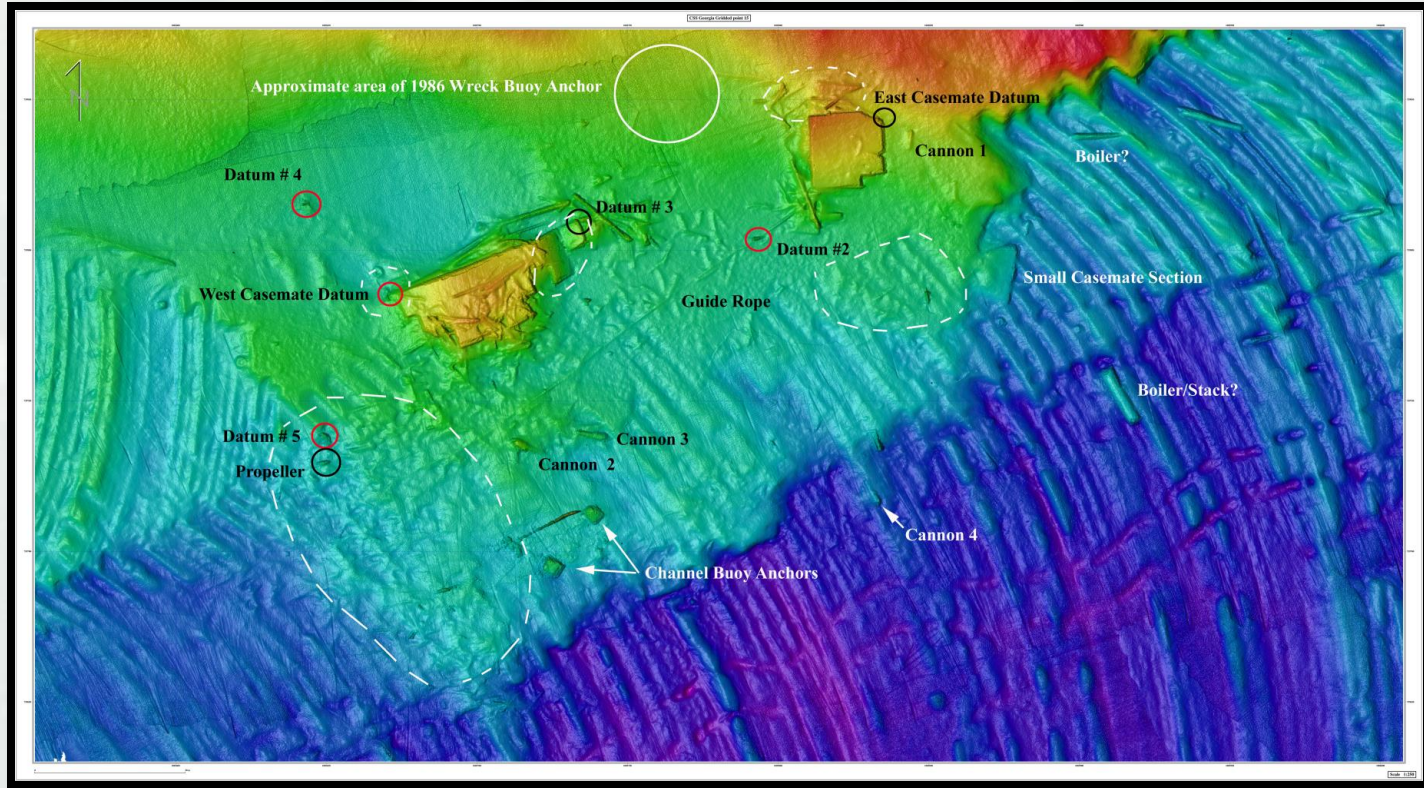
**BUILDING STRONG**®

# Large Artifact Recovery



**BUILDING STRONG<sup>®</sup>**

# Casemate Recovery



West Casemate  
FY 2017

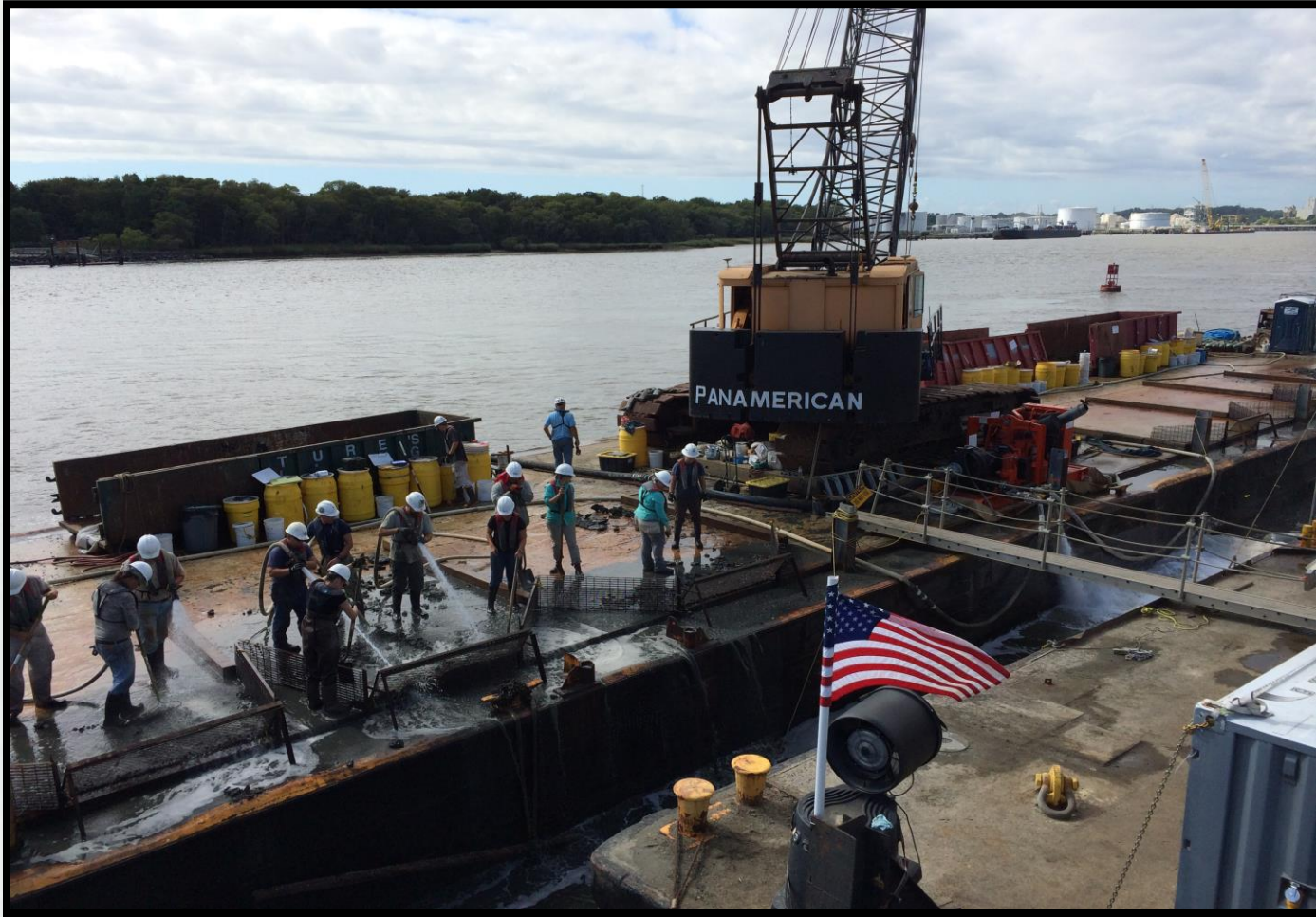


**BUILDING STRONG**®



# Mechanized Recovery

September 14 to October 23



**BUILDING STRONG**<sup>®</sup>

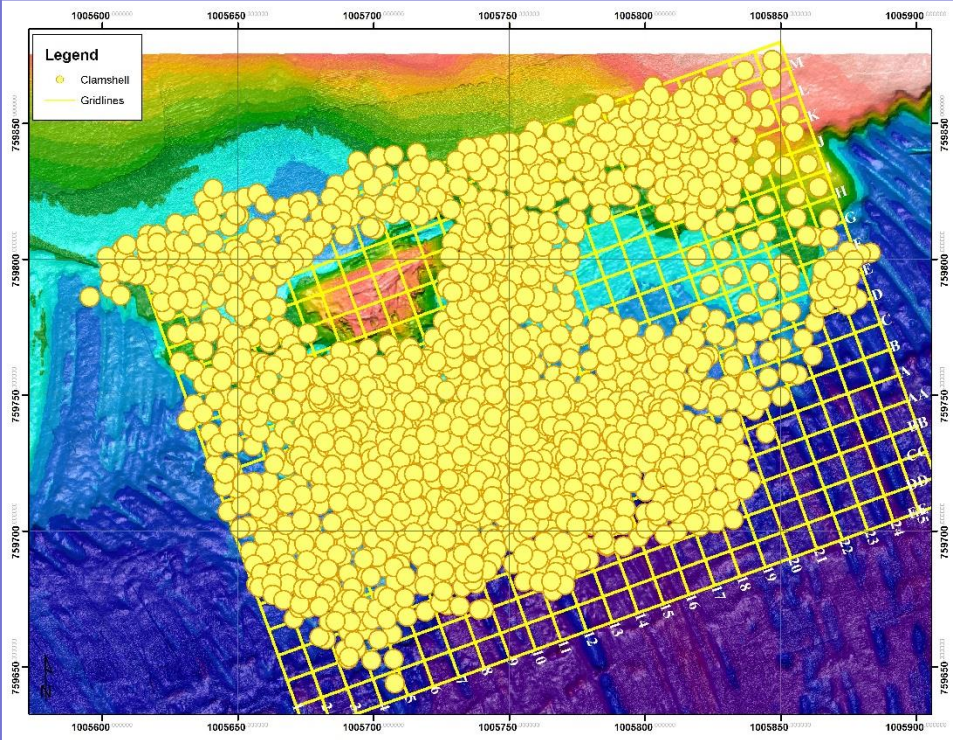
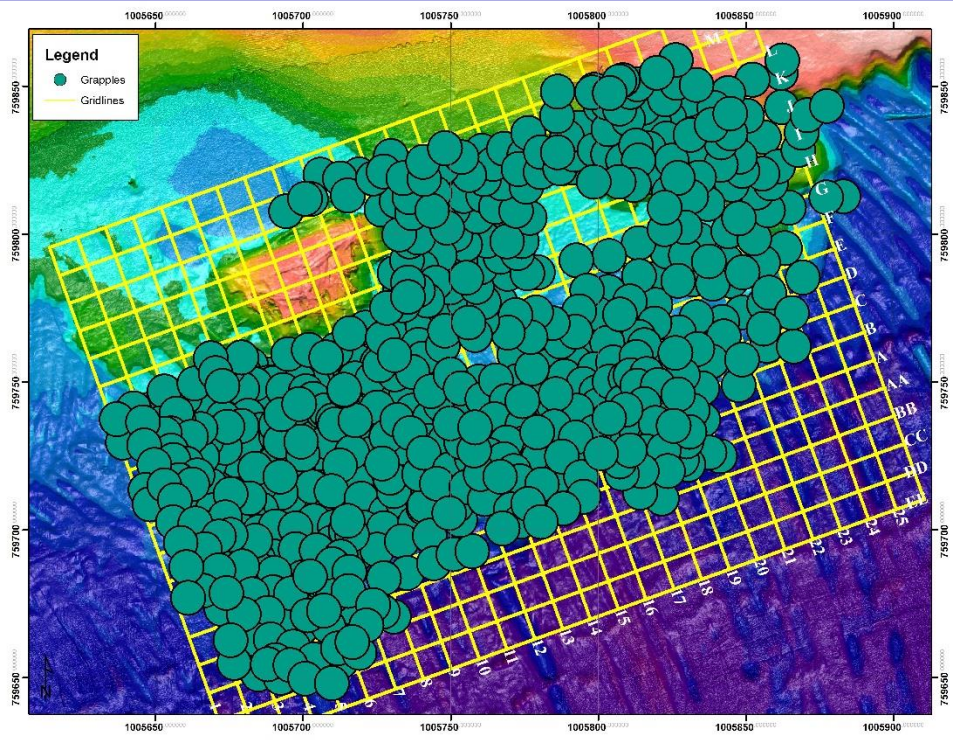


# Grappling



**BUILDING STRONG<sup>®</sup>**

# Mechanized Recovery



**BUILDING STRONG®**

# Grapple Recovery



**BUILDING STRONG**®

# Artifact Processing



**BUILDING STRONG**®



# 9-Inch Dahlgren Cannon



**BUILDING STRONG**®



## Brooke Rifled Shells

214 UXO Recovered to date



**BUILDING STRONG**®

# Vessel Components



**BUILDING STRONG**®

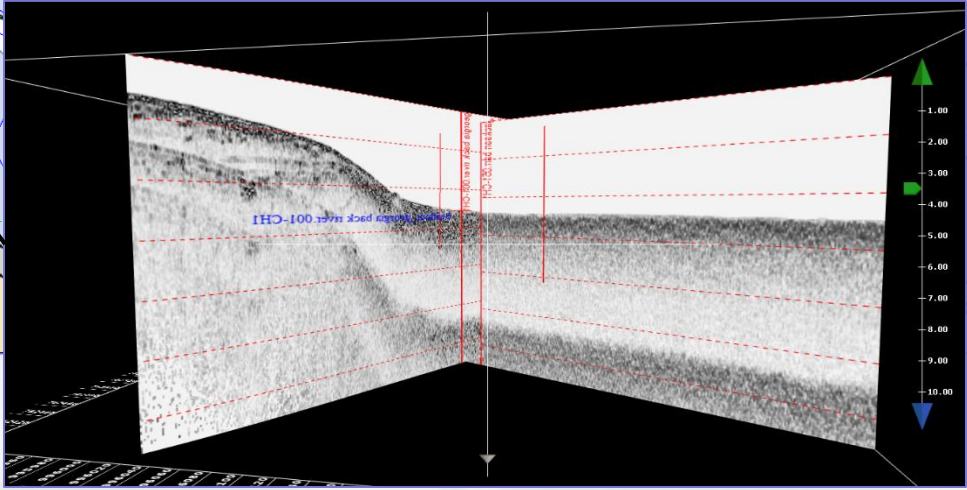
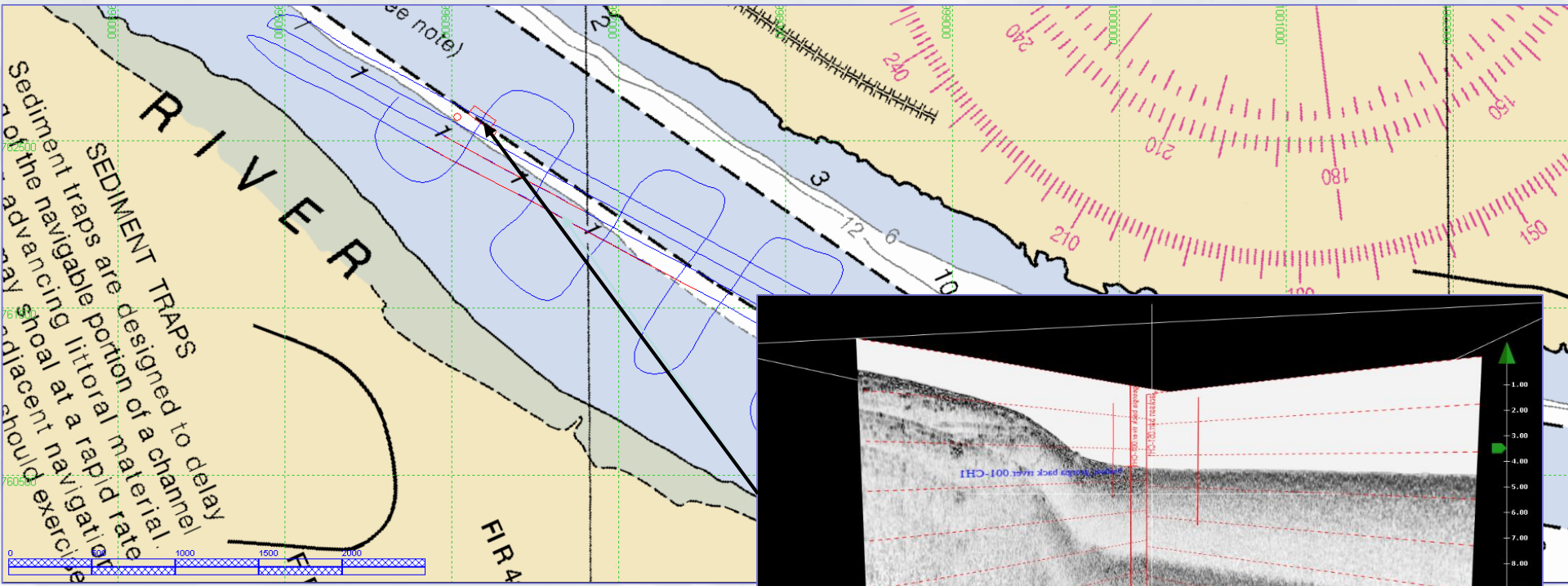


# Small Finds



**BUILDING STRONG**®

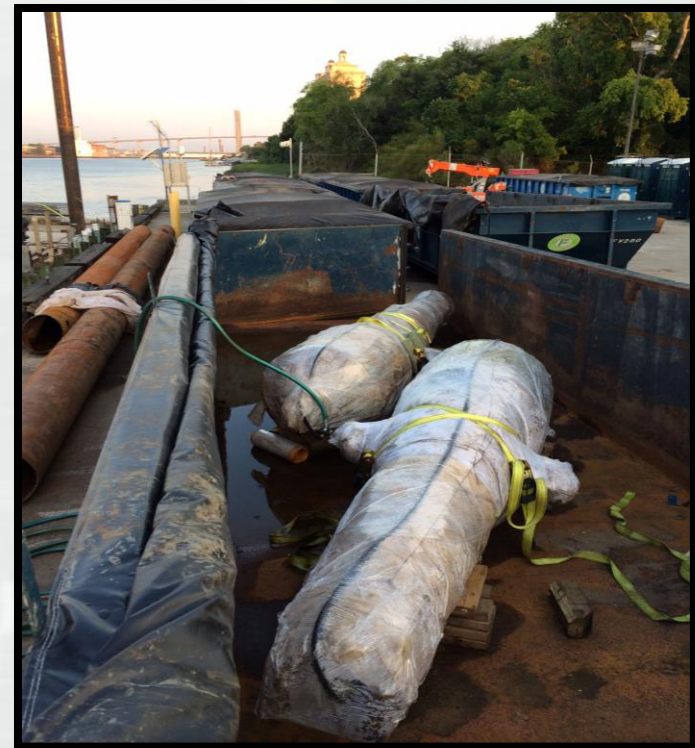
# Backriver Reburial



BUILDING STRONG®

# Conservation Methods

- *ARTIFACT FIELD STABILIZATION, ACCESSIONING, STORAGE, AND SHIPMENT*
- *ARTIFACT SHIPMENT TO THE CONSERVATION RESEARCH LABORATORY AT TEXAS A&M UNIVERSITY*



**BUILDING STRONG**®



**THANK YOU**



**BUILDING STRONG<sup>®</sup>**