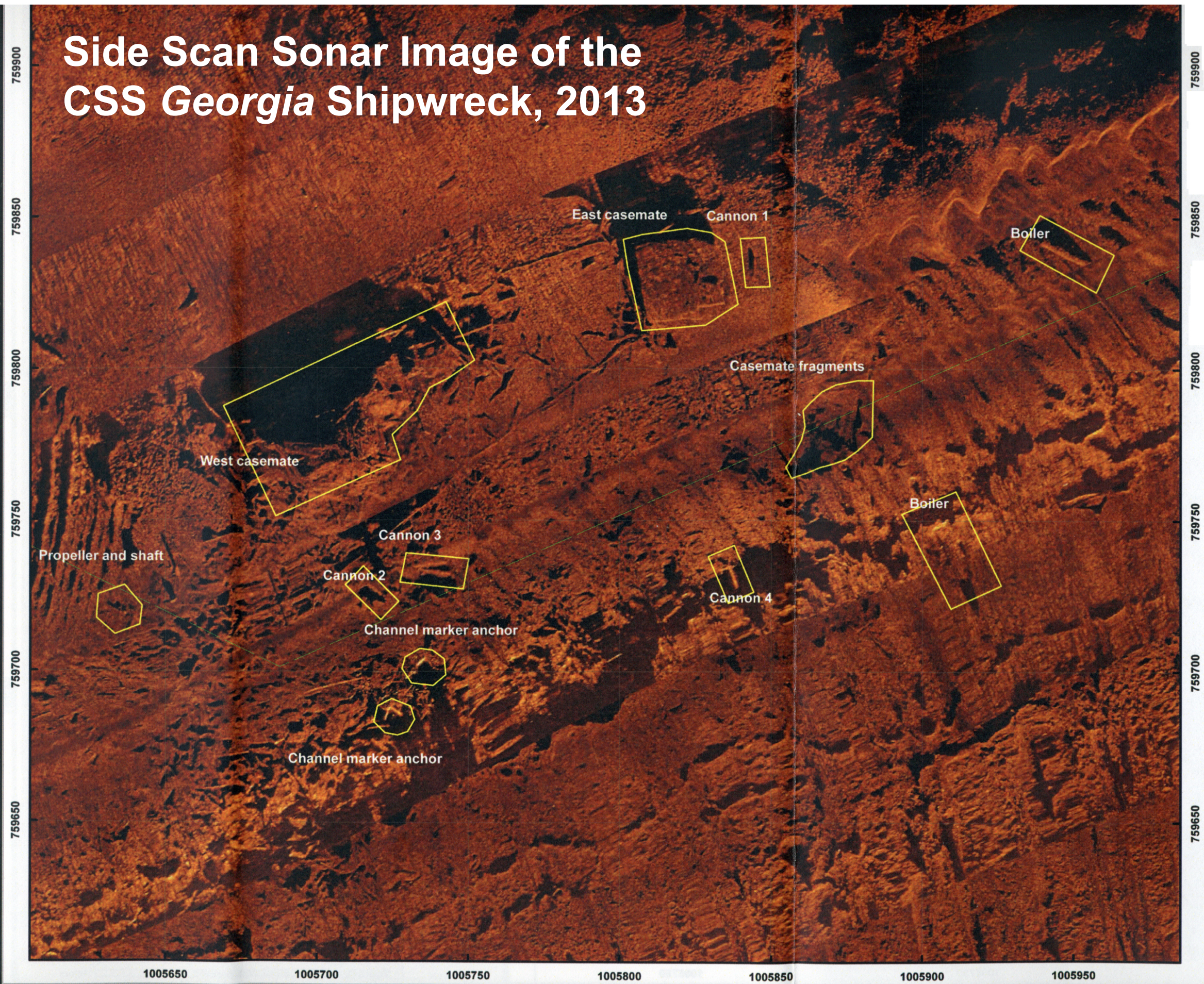


Side Scan Sonar Image of the CSS *Georgia* Shipwreck, 2013



This image of the CSS *Georgia* shipwreck on the Savannah River bottom was made in 2013 using High Resolution Side Scan Sonar. It compliments data provided by the Multibeam Sonar Survey.

In the image to the left, the river channel is marked by channel marker anchors and Cannon 4.

The vessel's casemate is broken into two main sections (west casemate and east casemate).

Channel dredging scars are visible as the arched, semi-circular lines running through the channel and along either side of it.

Note the locations of four cannons, the propeller, and the boiler.

(Dean et al. Panamerican Consultants, Inc. 2013)