

ARCHAEOLOGICAL DATA RECOVERY AND MITIGATION OF THE CSS *GEORGIA*

Dr. Gordon Watts, Stephen James, and Parker Brooks

June 2, 2015

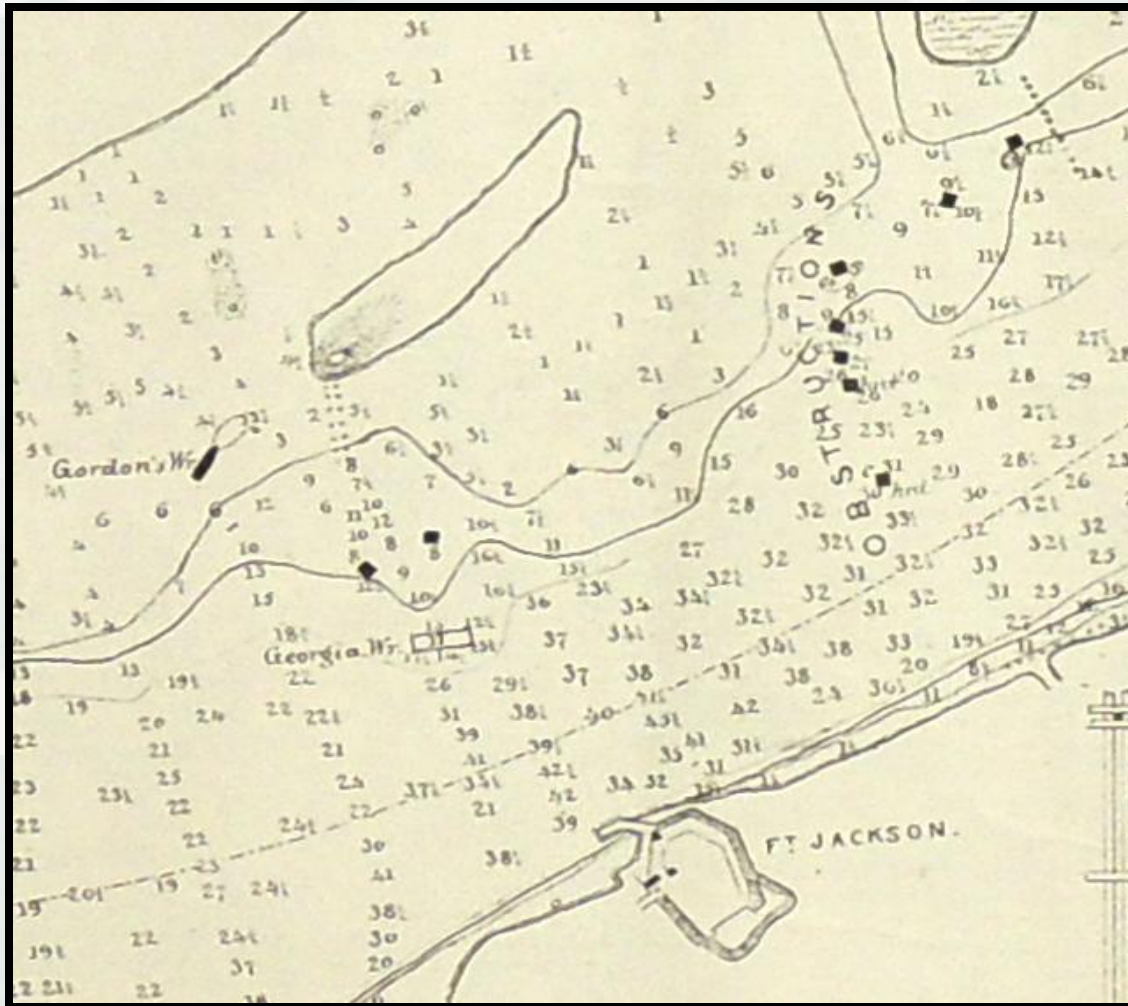


Savannah
DISTRICT



US Army Corps of Engineers
BUILDING STRONG®

Vessel History

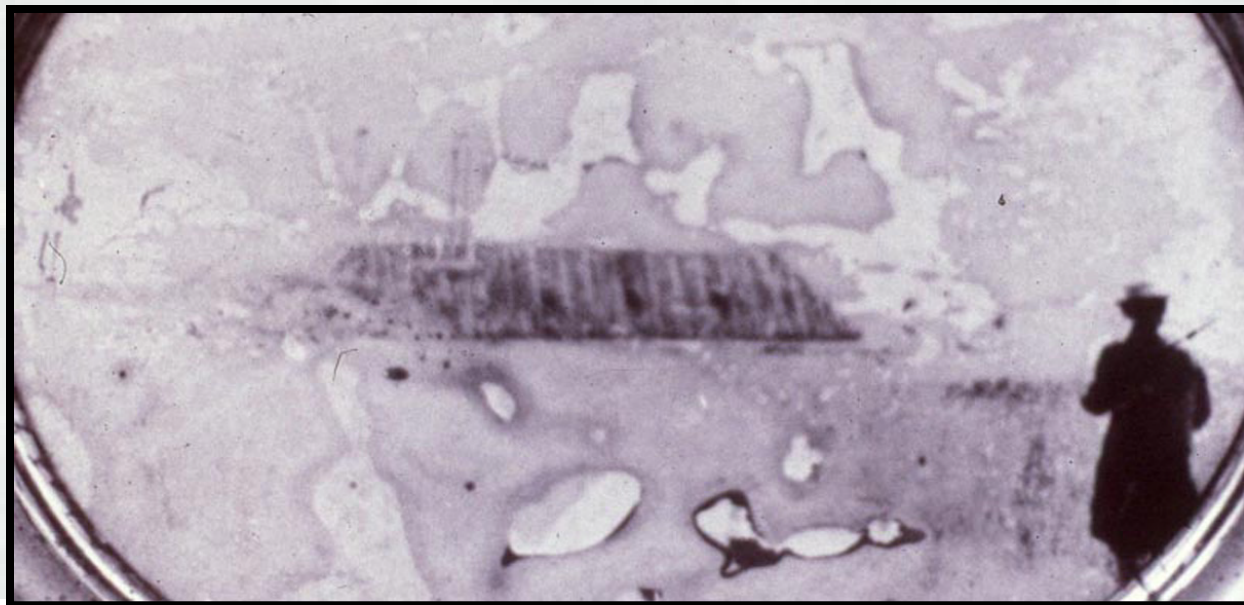
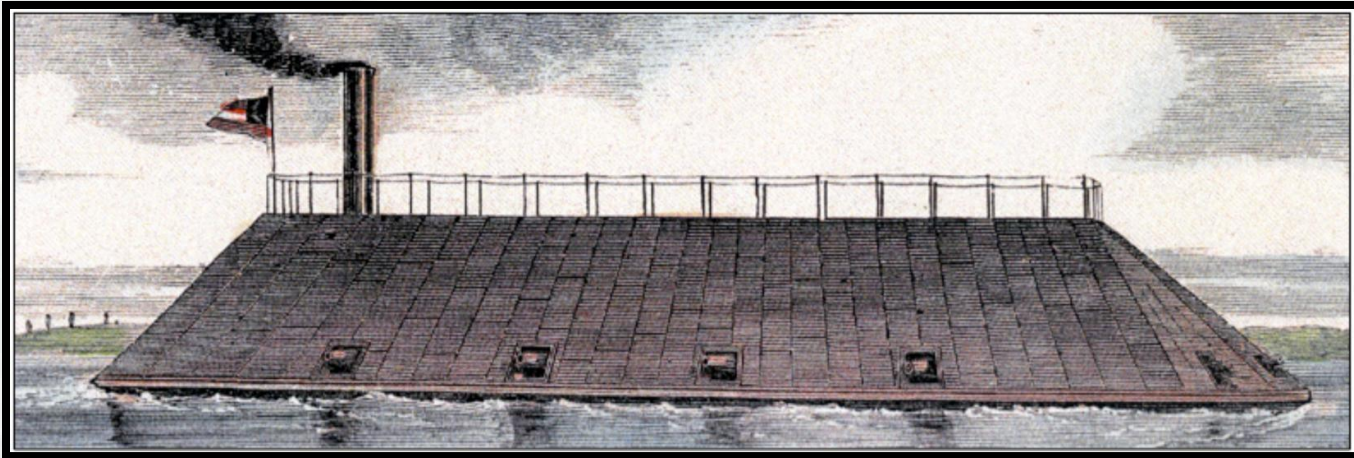


1871 Ludlow Map



BUILDING STRONG®

Contemporary Lithograph and Photograph (?)



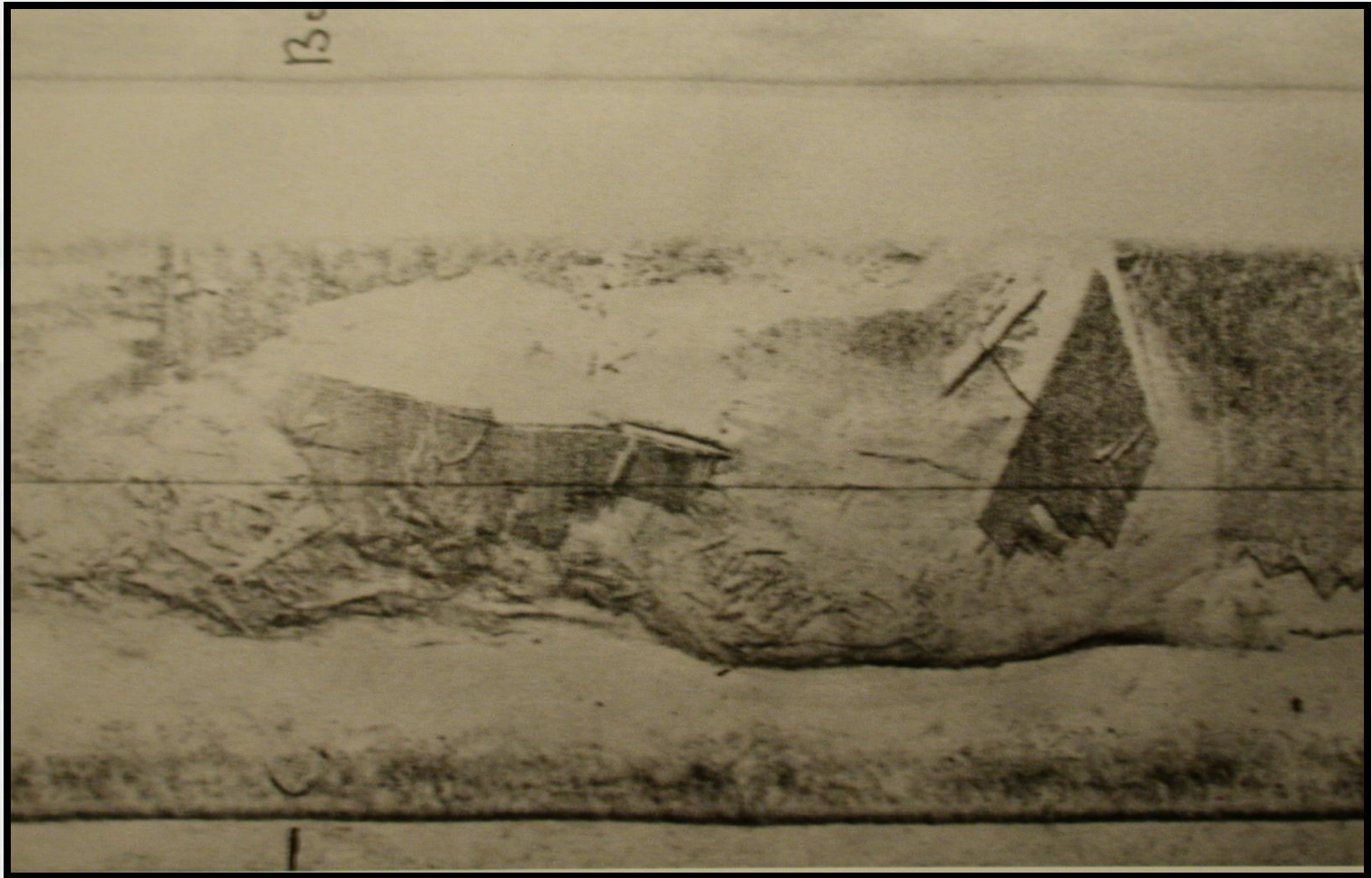
BUILDING STRONG®

CSS Georgia Site Location



BUILDING STRONG®

Previous Investigations

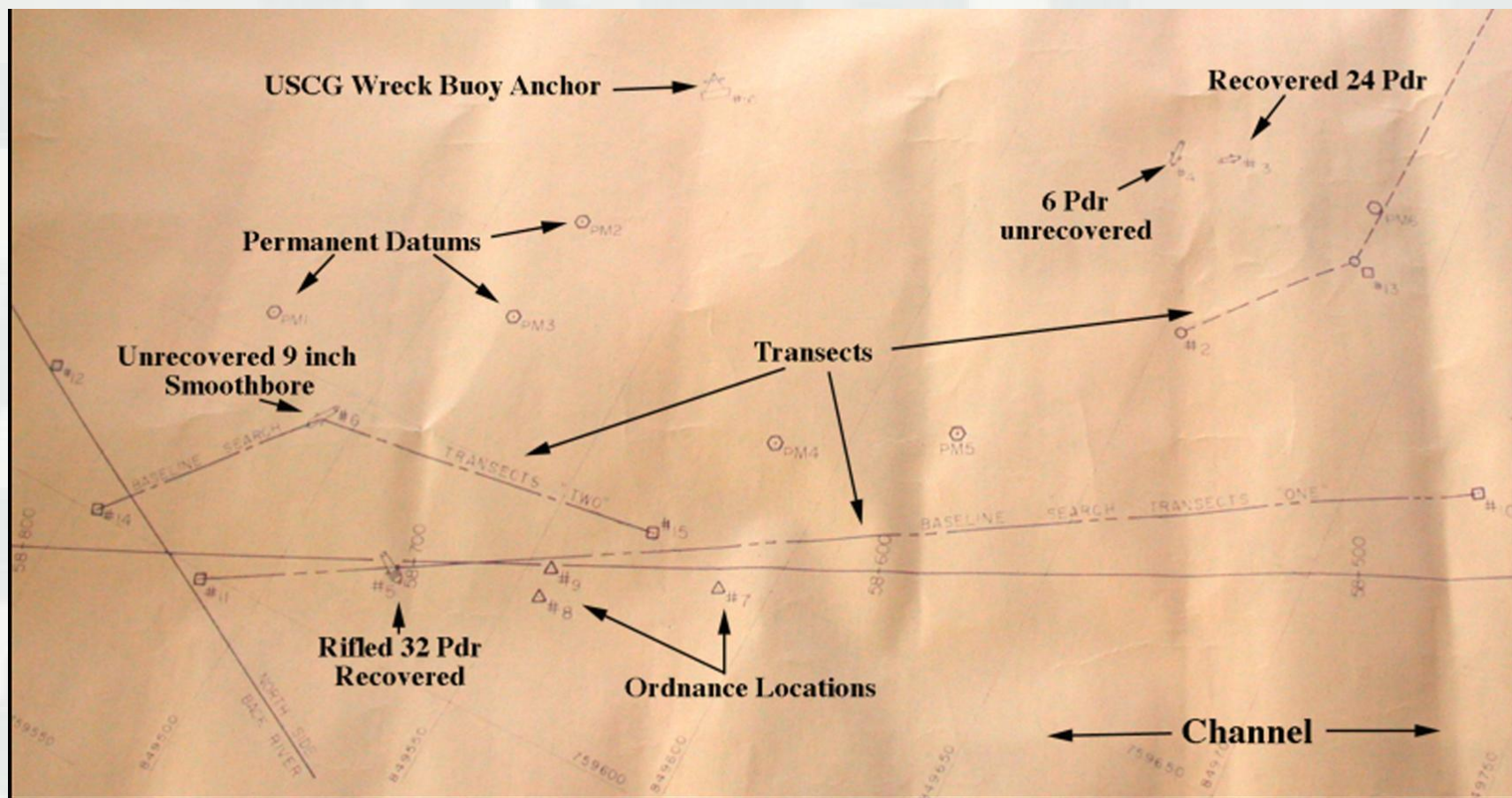


1980 Texas A&M Investigation



BUILDING STRONG®

Previous Investigations



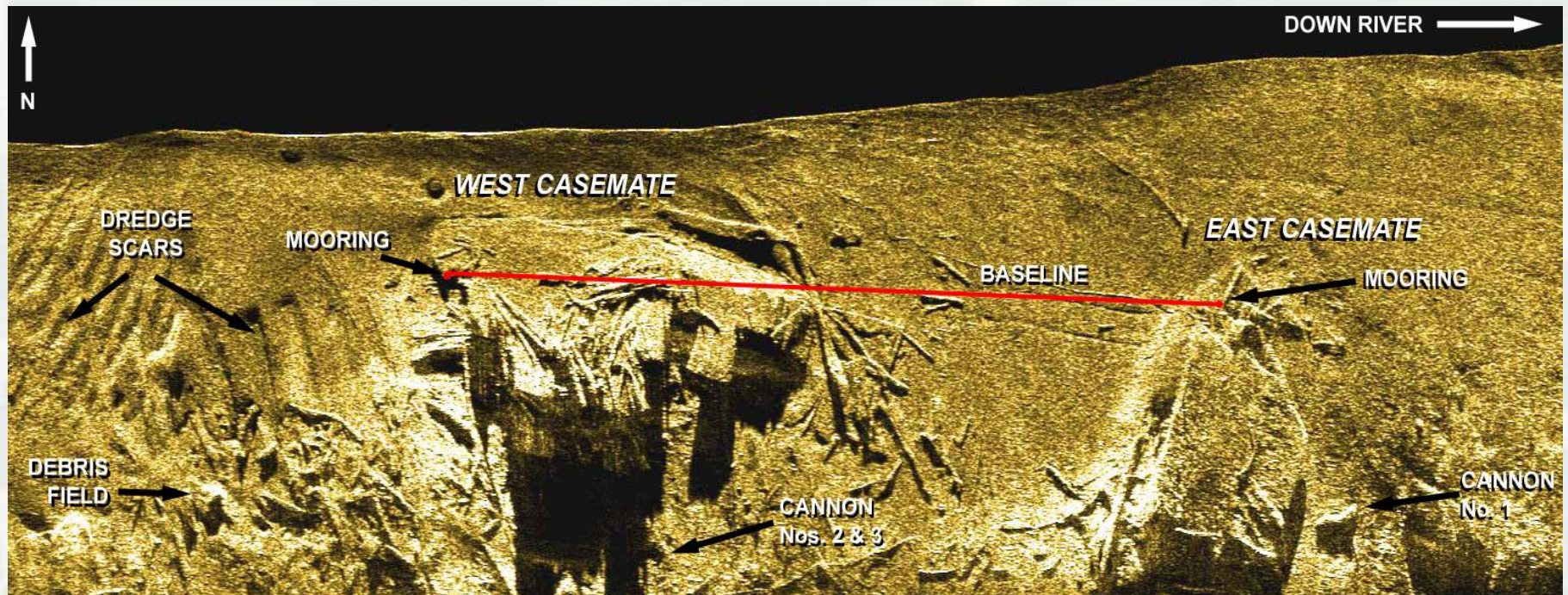
1986 Site Plan

Recovered Dahlgren and Brooke Shells



BUILDING STRONG®

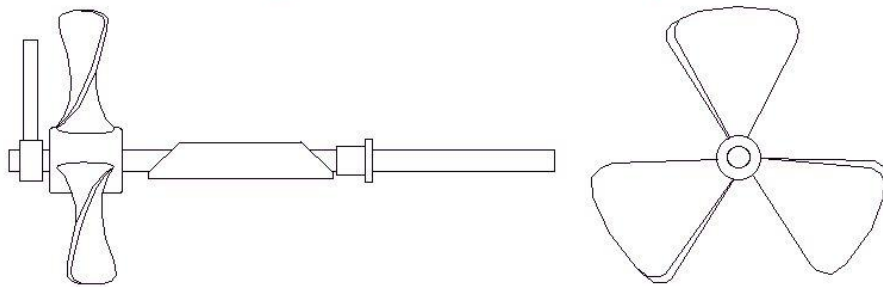
2003 Investigation - Labeled Sidescan Sonar Image



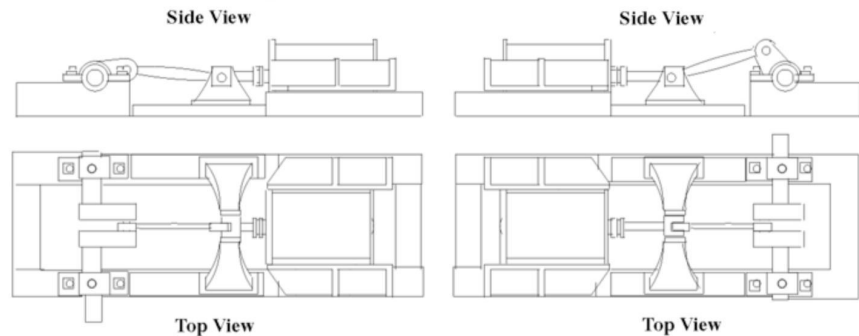
BUILDING STRONG®

Identified Vessel Components

Propeller Drawing



Engine Reconstruction



0 5
Scale in Feet

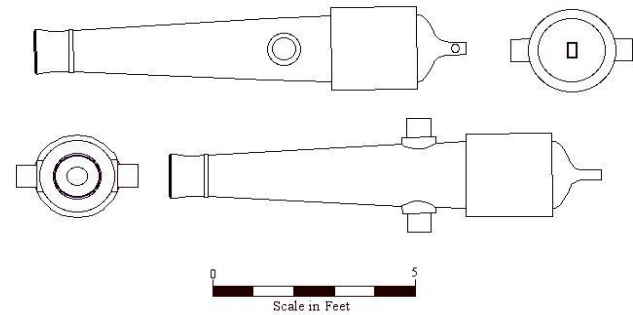


BUILDING STRONG®

Ordnance Types

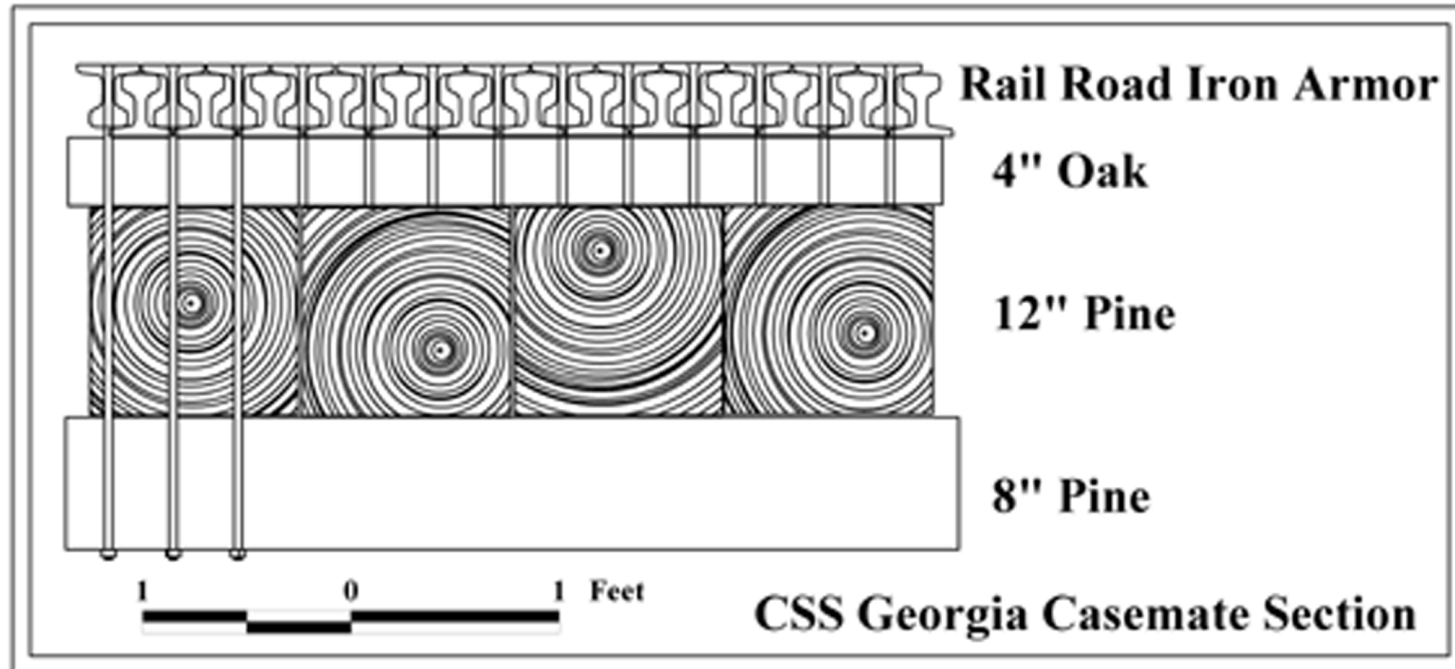


CSS Georgia Banded 32pounder Rifle

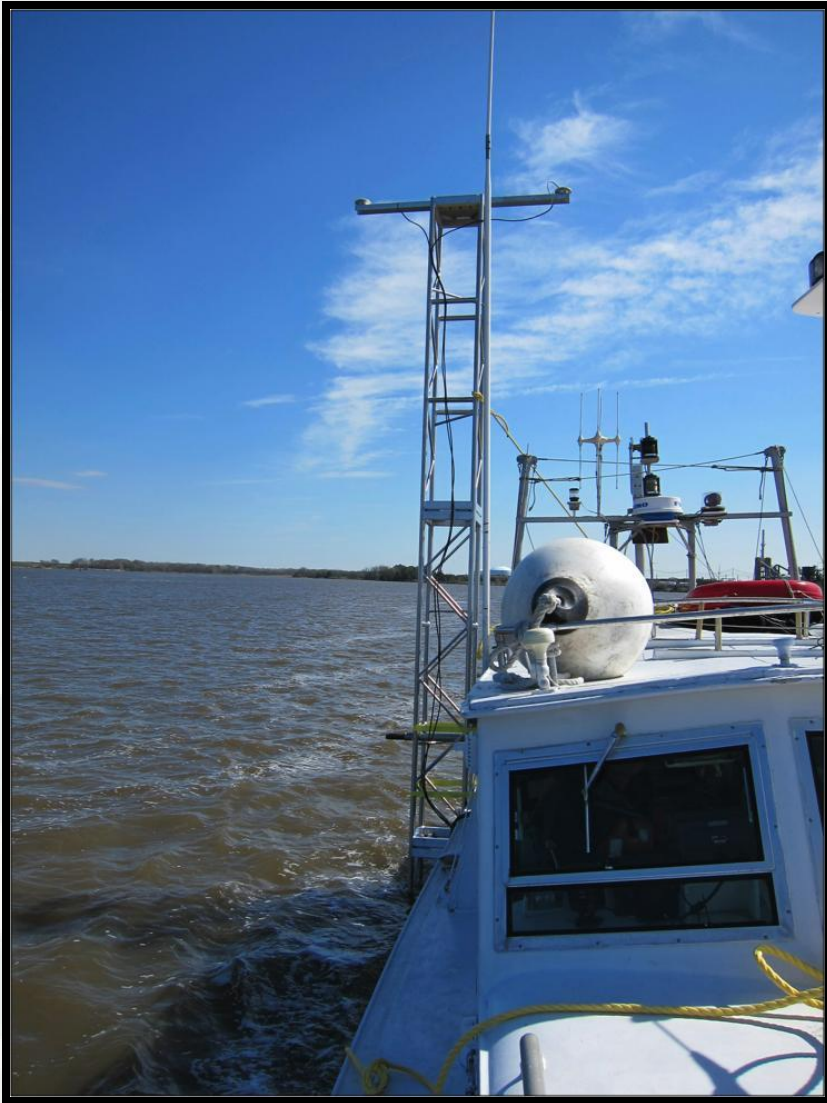


BUILDING STRONG®

Casemate Cross Section

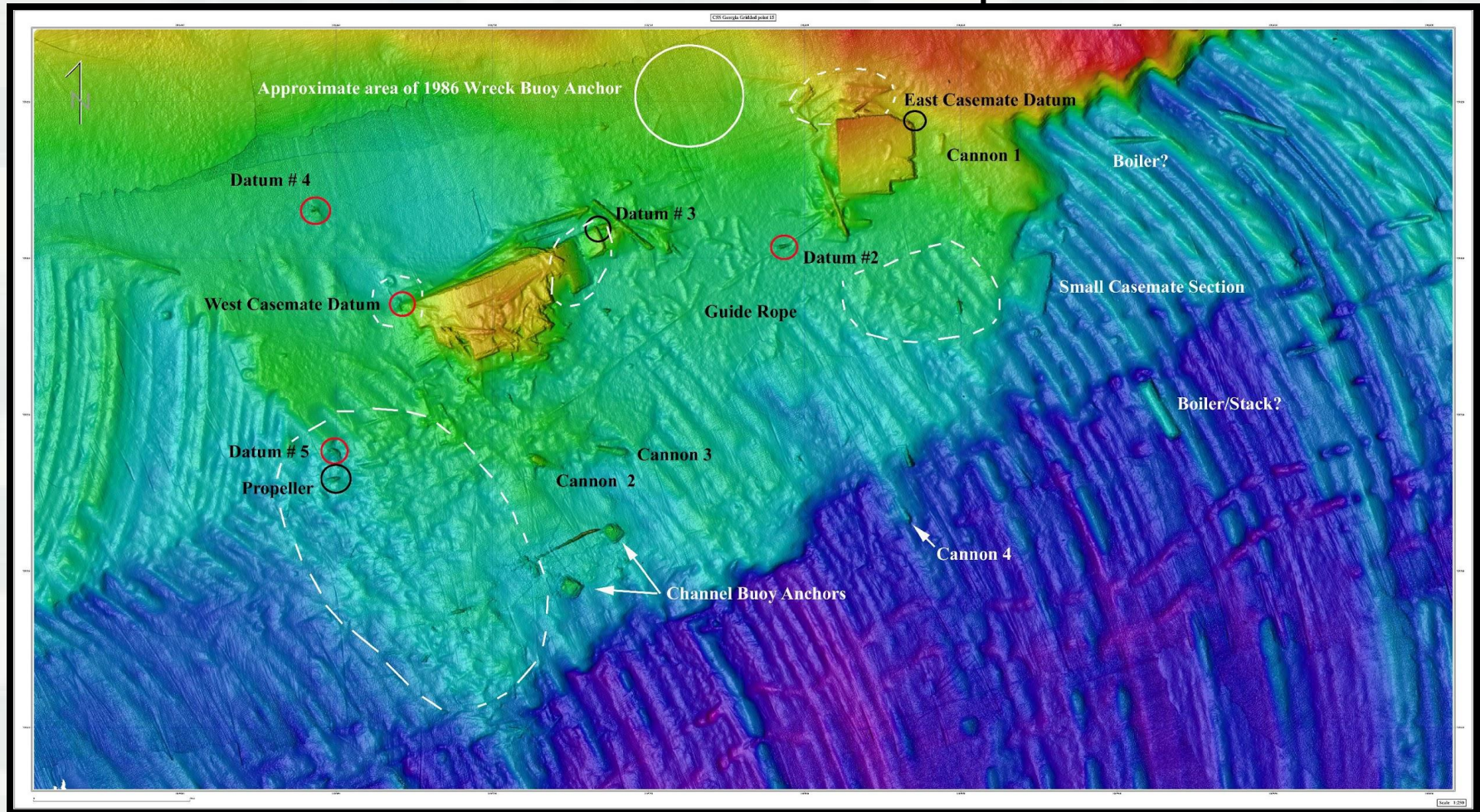


2013 Multibeam Survey



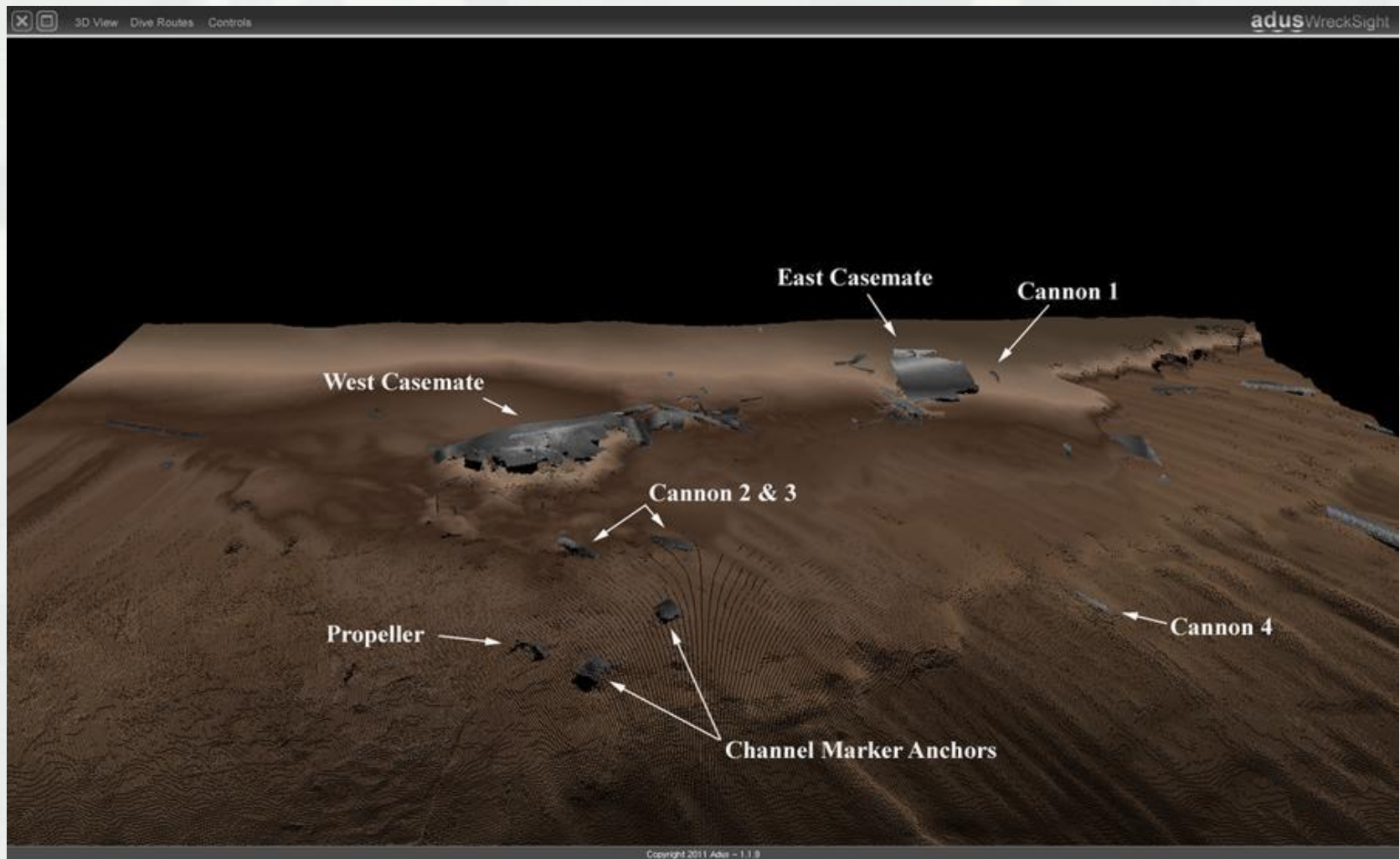
BUILDING STRONG®

2013 High Resolution Multibeam Data Terrain Site Map



BUILDING STRONG®

Multibeam WreckSight Program



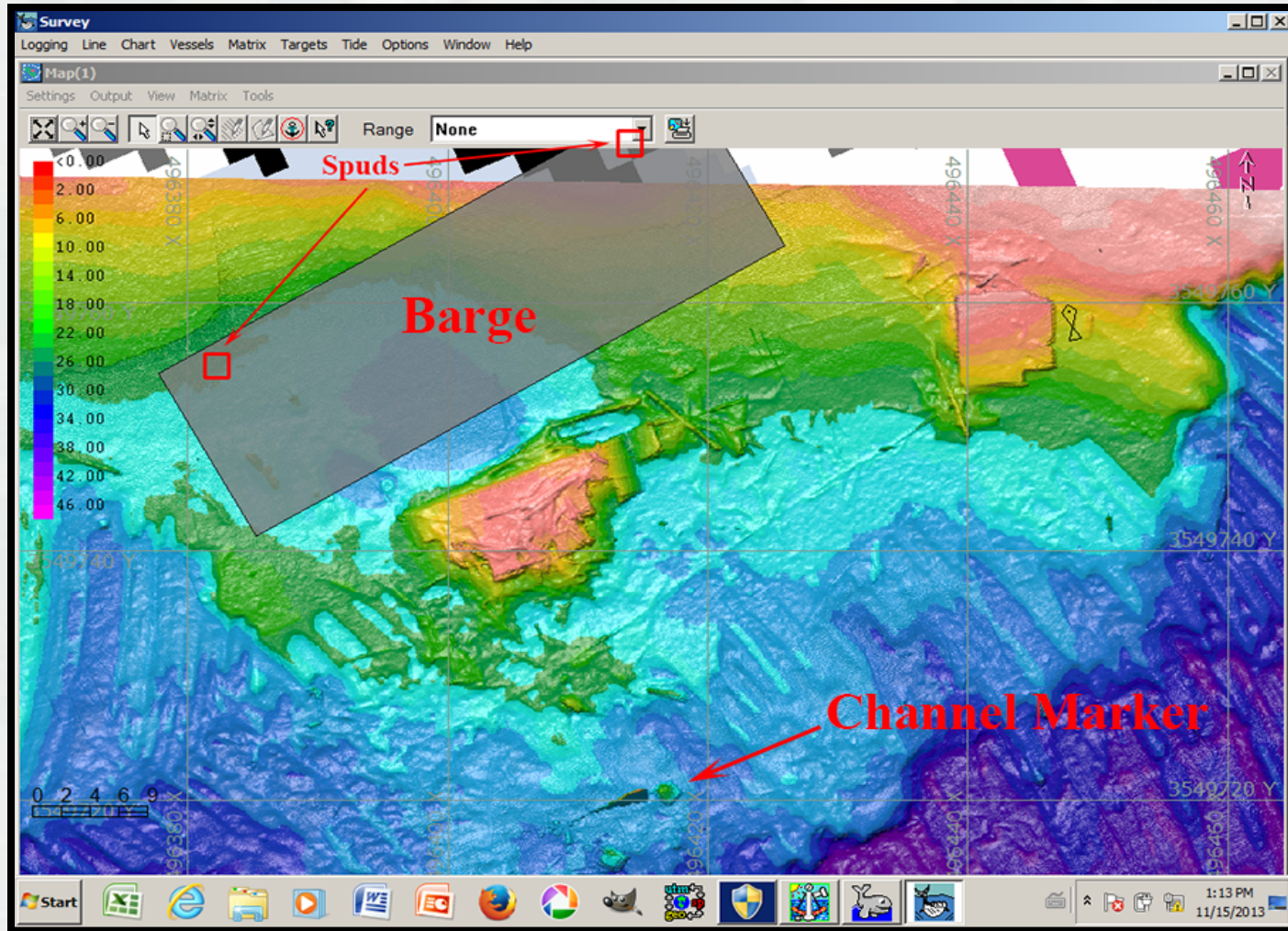
BUILDING STRONG®

2013 Recovery & Integrity Testing



BUILDING STRONG®

Site Map With Crane Barge Placement

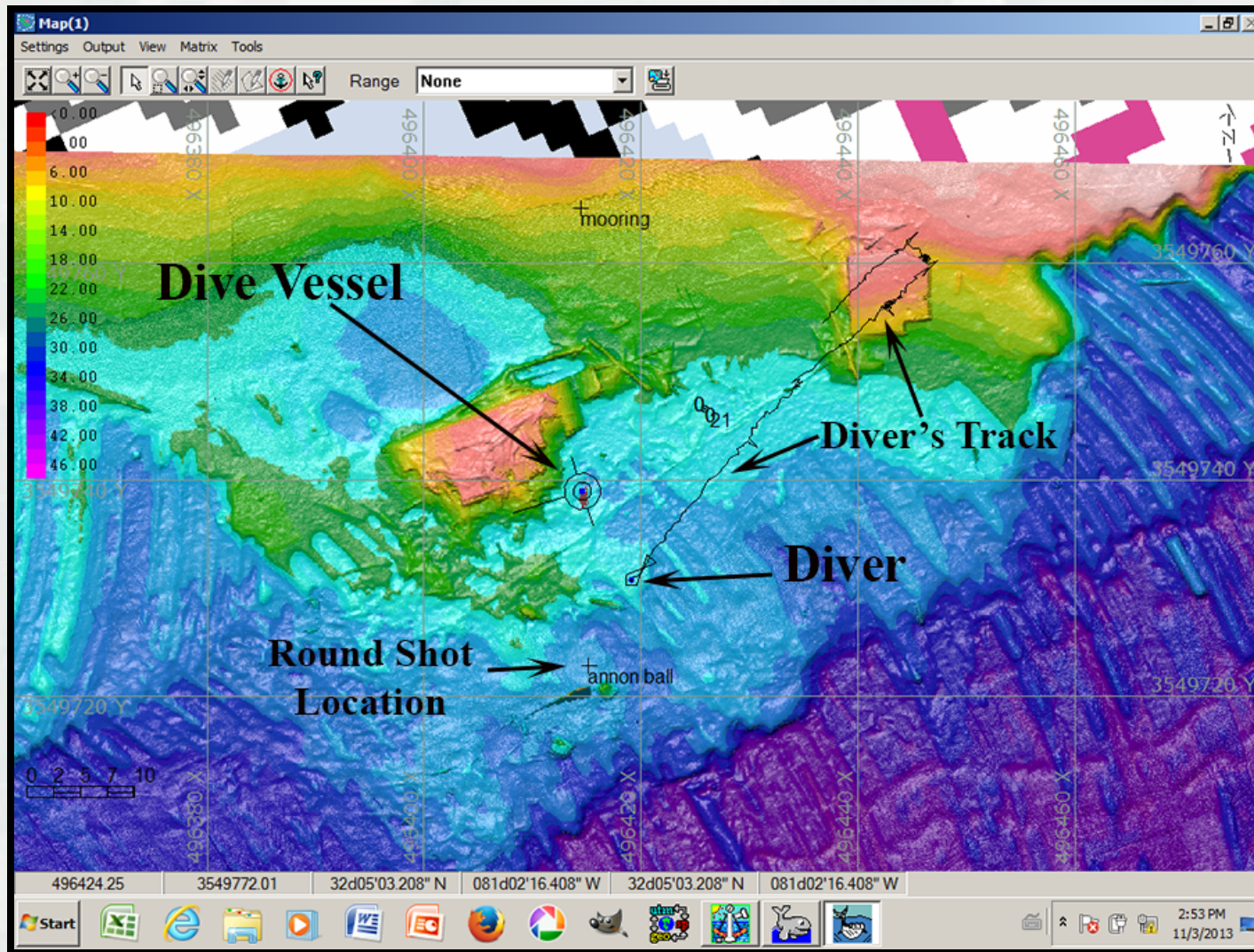


Diver Tracking System – Operator and Diver



BUILDING STRONG®

Diver Tracking System



BUILDING STRONG®

Casemate Section Recovery



BUILDING STRONG®

Casemate Railroad Armor Integrity Test

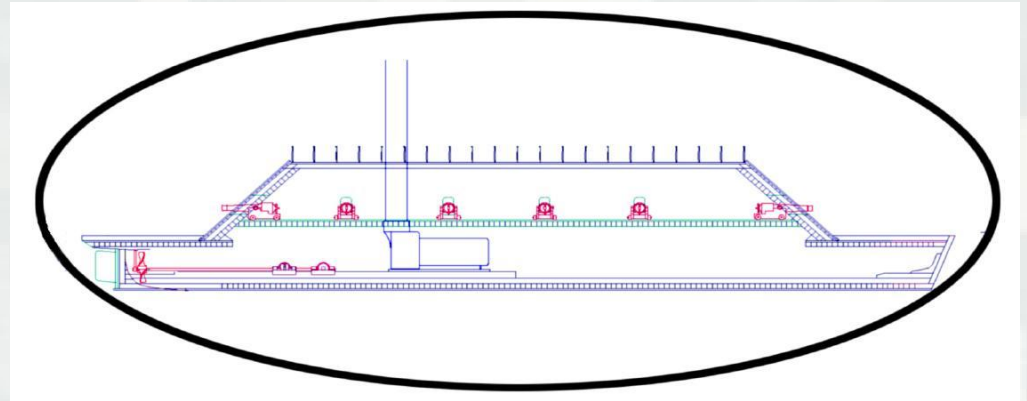


BUILDING STRONG®

Ongoing Systematic Archaeological Recovery

RESEARCH ISSUES

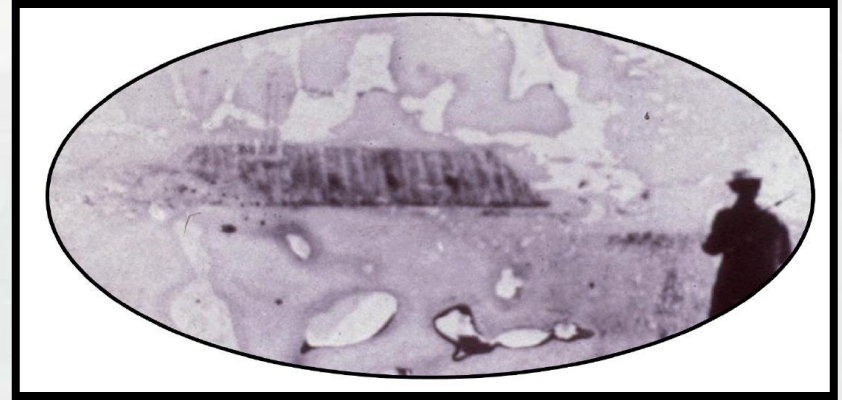
**HISTORICAL RESEARCH
SALVAGE RECORDS**



**ARCHAEOLOGICAL RESEARCH
VESSEL DESIGN AND CONSTRUCTION
MACHINERY AND PERFORMANCE**



BUILDING STRONG®



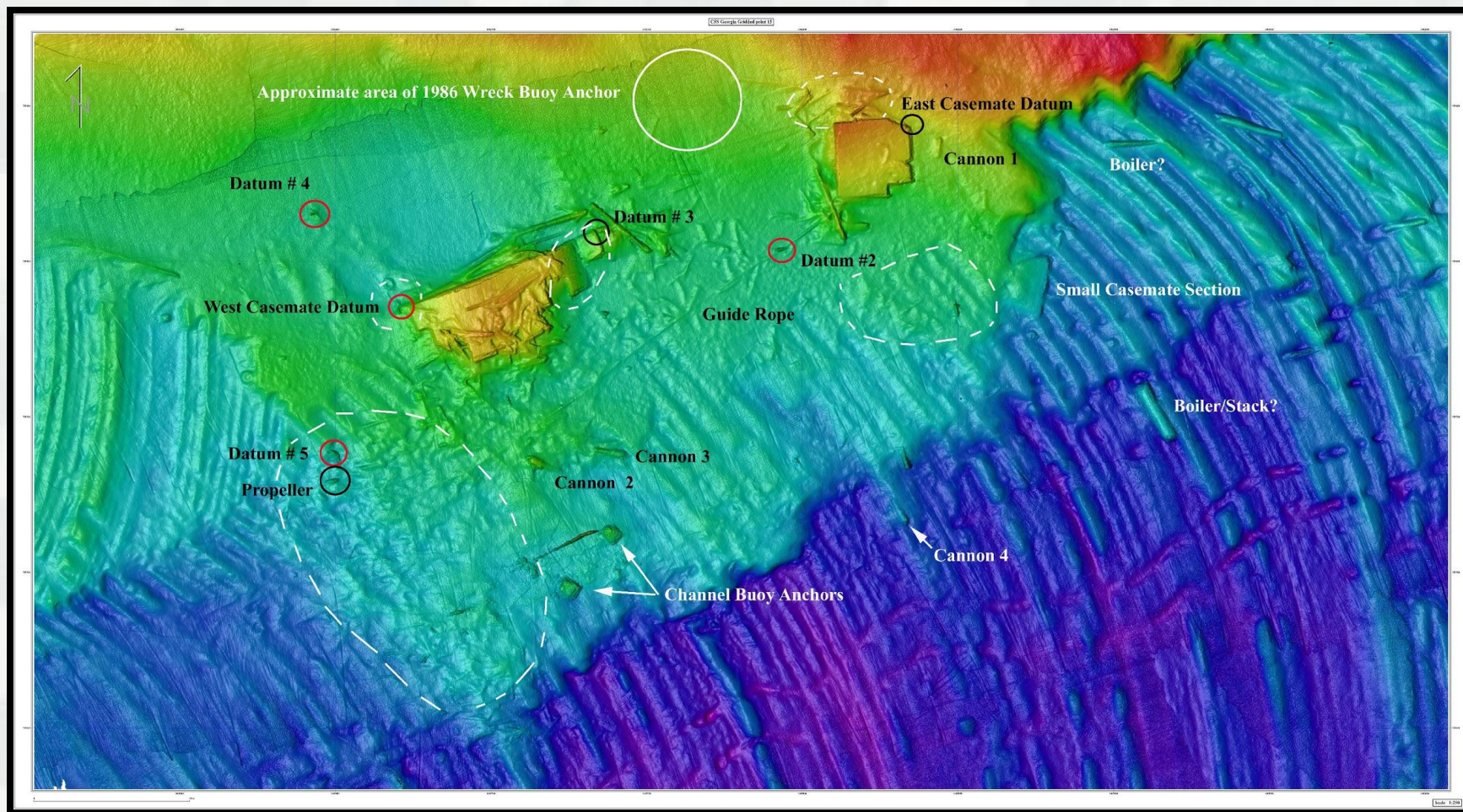
ARCHAEOLOGICAL OBJECTIVES

- **Objective 1—Moorings Deployment**
- **Objective 2—Baseline/Navigation Web Restoration**
- **Objective 3—Site Mapping, Artifact/Vessel Component Location, and Tagging**
- **Objective 4—Test Excavations**
- **Objective 5—Diver Remote Sensing and Small Artifact Recovery**
- **Objective 6—Structural Documentation and Testing**
- **Objective 7—Final Archaeological Clearance**
- **Objective 8—Casemate Documentation**



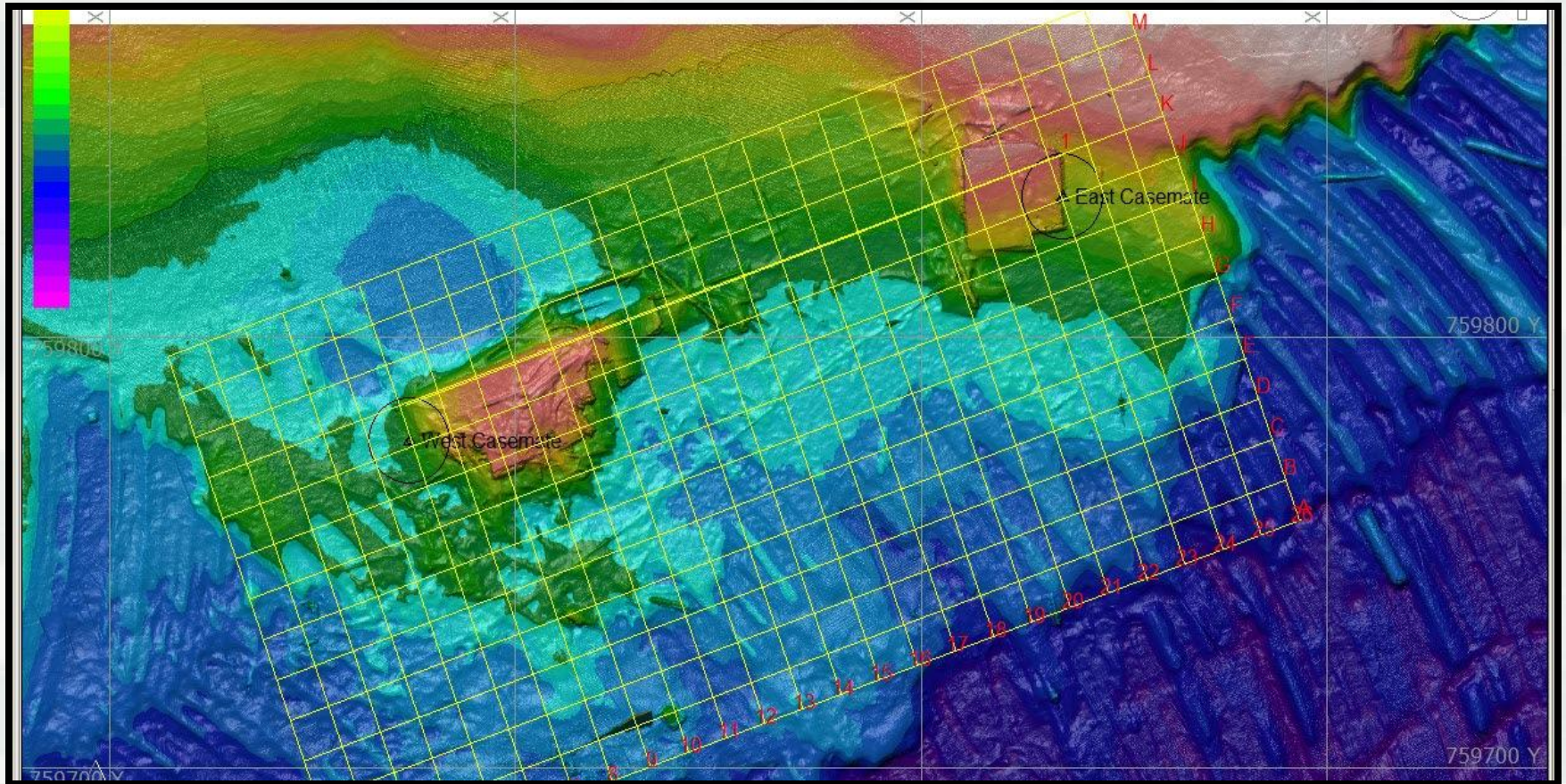
BUILDING STRONG®

Archaeological Objectives



BUILDING STRONG®

Site Map with Electronic Grid Unit Overlay



BUILDING STRONG®



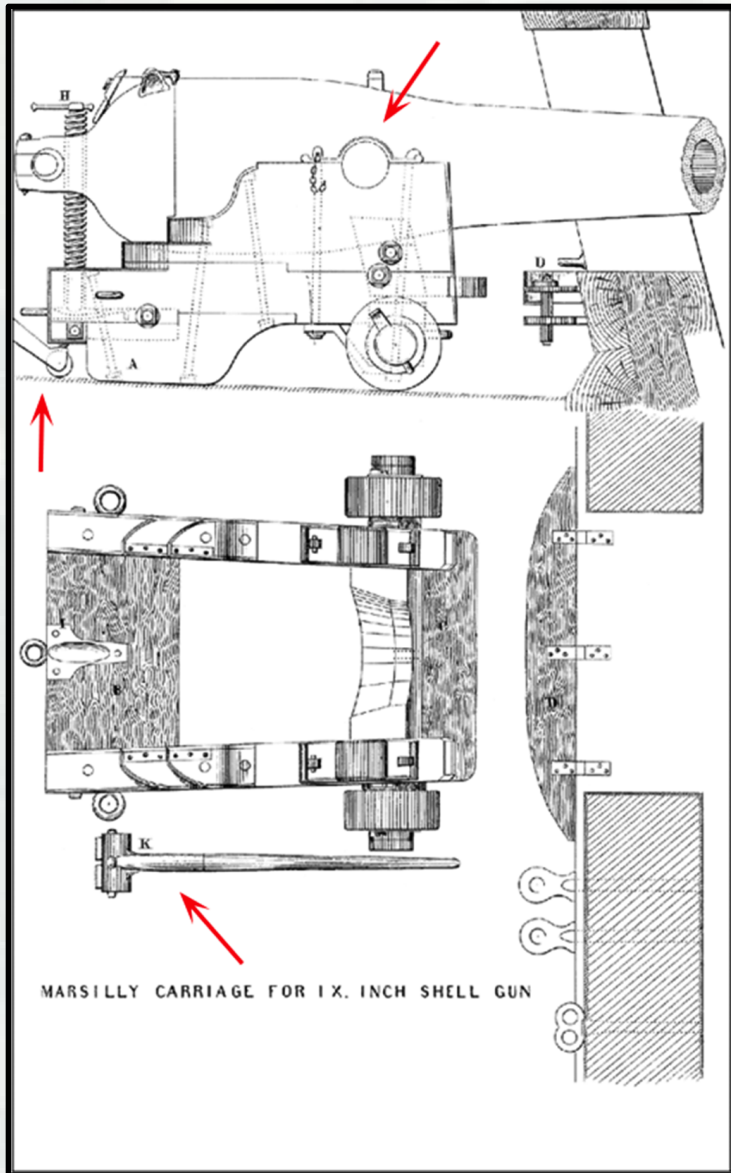
BUILDING STRONG®



BUILDING STRONG®



BUILDING STRONG®



BUILDING STRONG®

Trunnion Cap



Eyes for Tackle

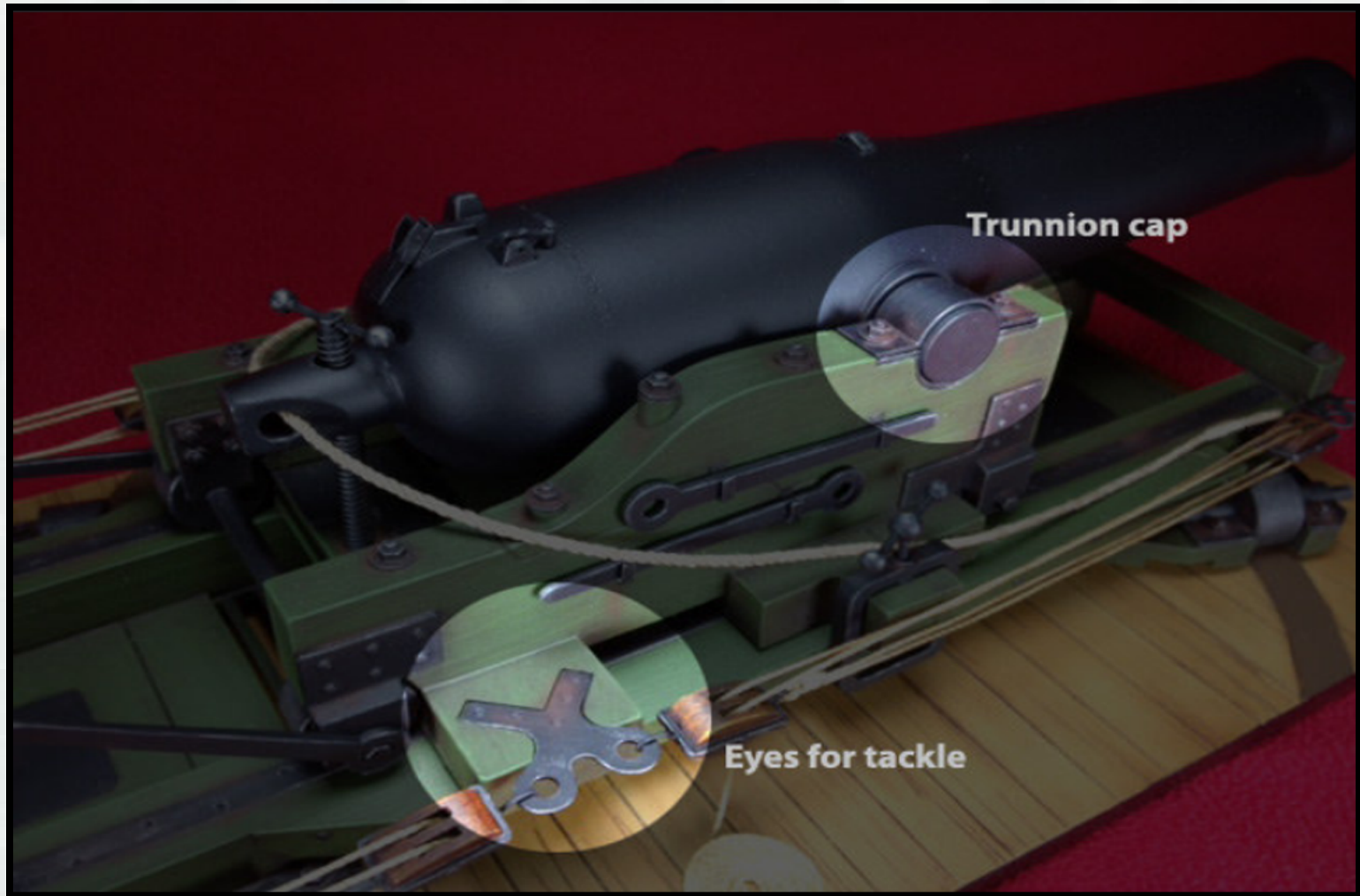


BUILDING STRONG®



BUILDING STRONG®

Gun Carriage with Trunnion Cap & Eyes For Tackle



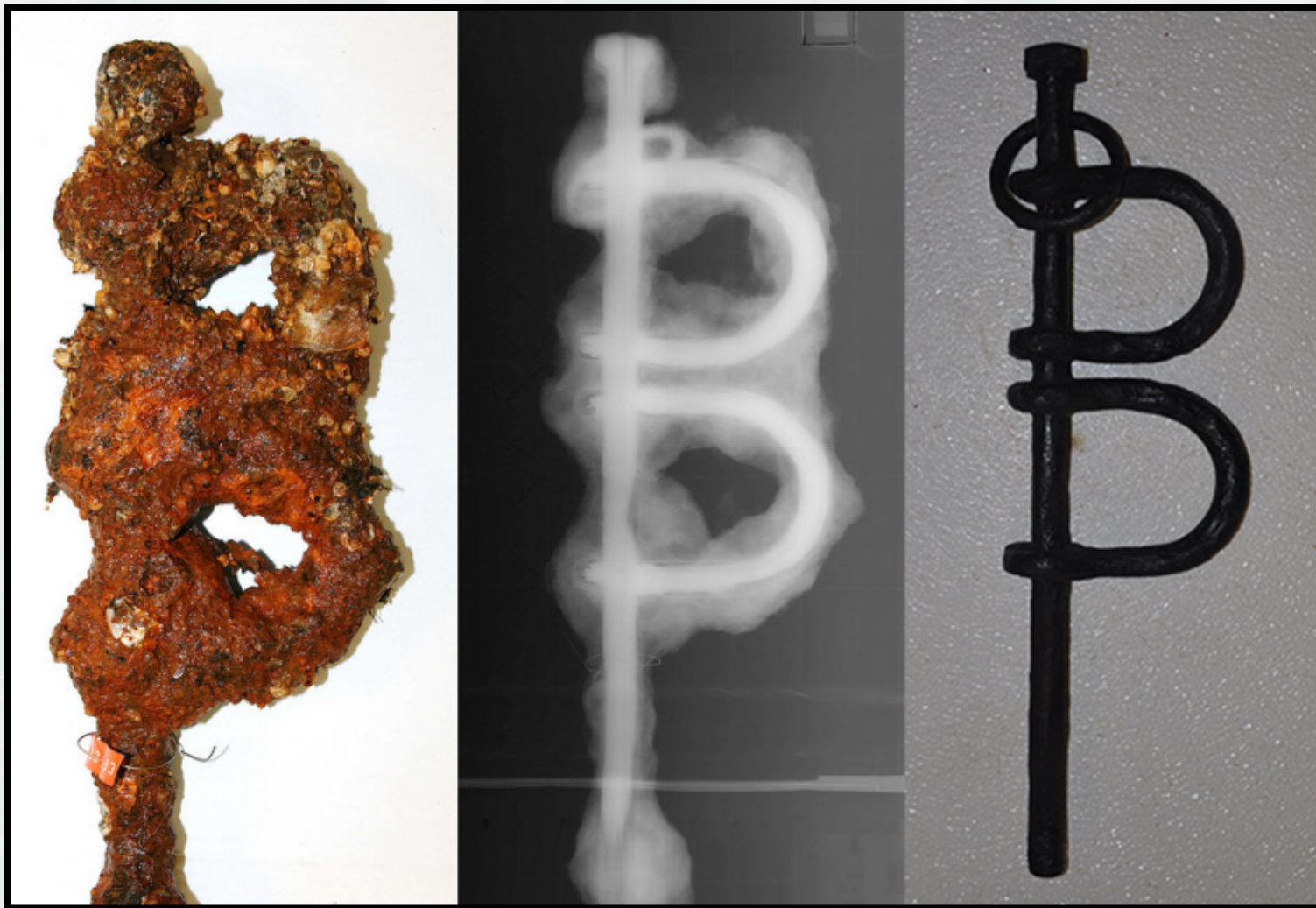
BUILDING STRONG®

Field Conservation Lab



BUILDING STRONG®

Conservation of Recovered Leg Shackles



UXO RECOVERY PHASE

- Objective 1—UXO Identification and Recovery
- Objective 2—Ordnance Inerting and Transportation



Figure 53. 9-inch Dahlgren Shell.



Figure 54. 9-inch Dahlgren Shell.

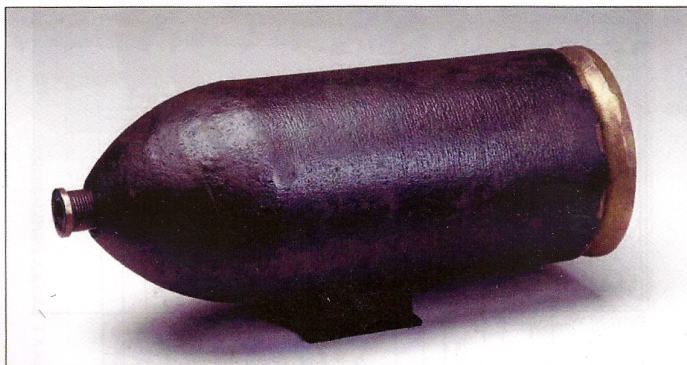
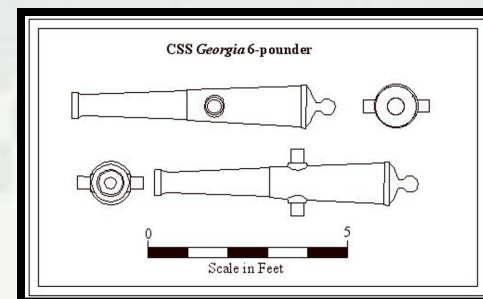
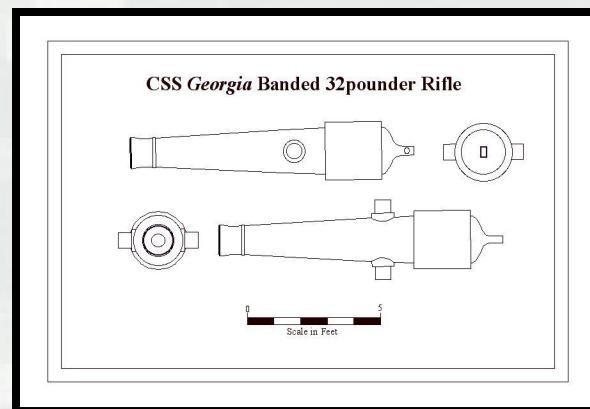
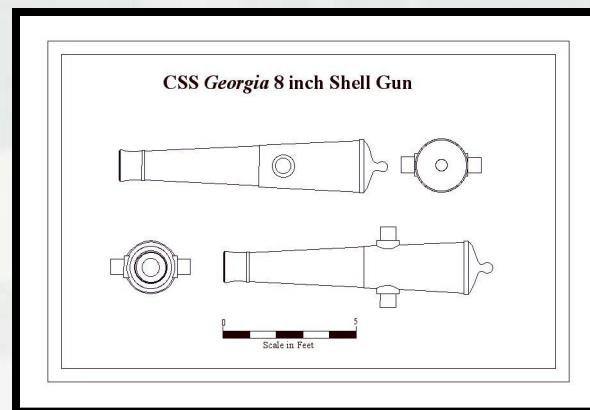
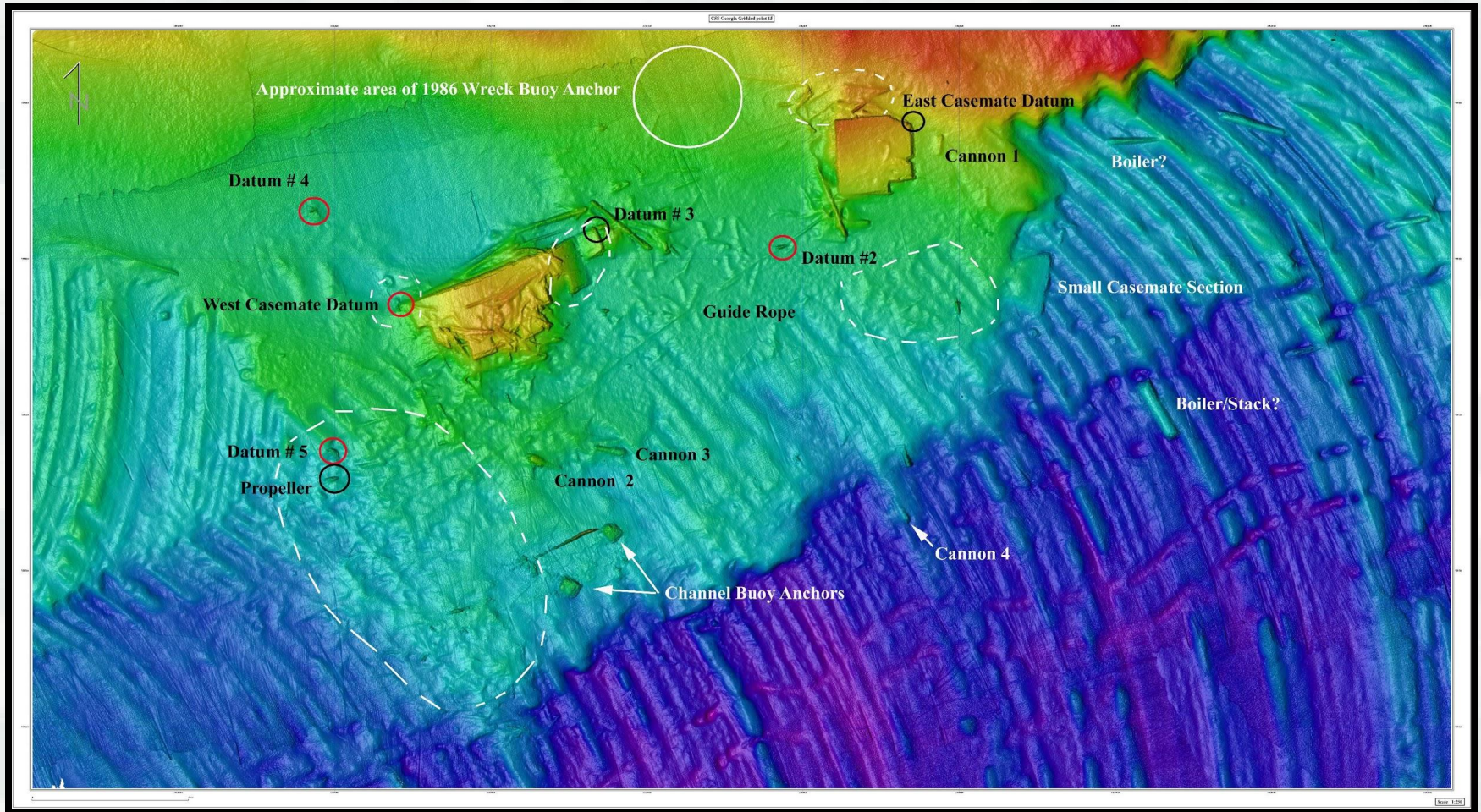


Figure 55. 100-pounder Parrott Shell.



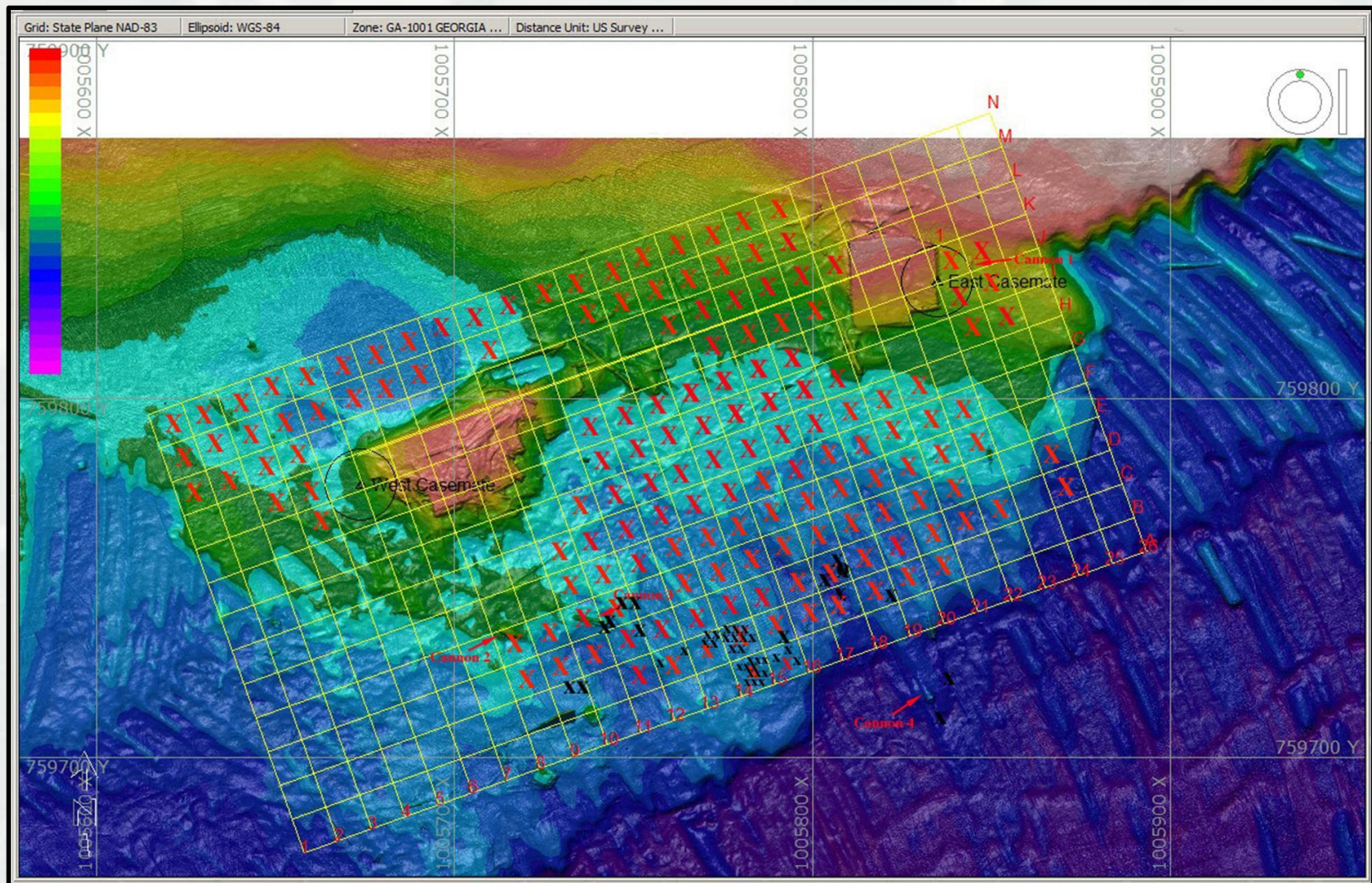
BUILDING STRONG®

Cannon Recovery Locations



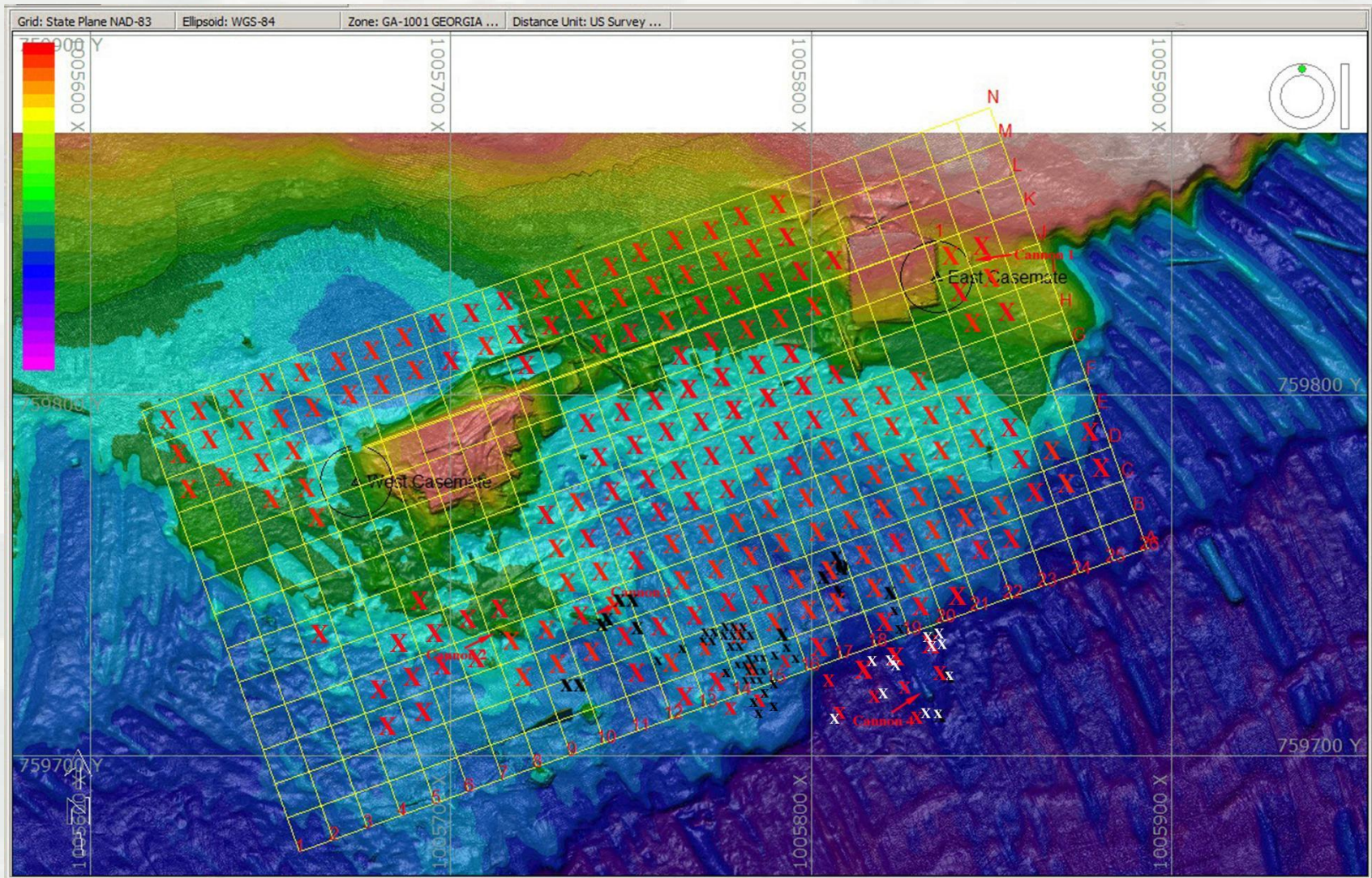
BUILDING STRONG®

UXO Locations



BUILDING STRONG®

UXO Locations



BUILDING STRONG

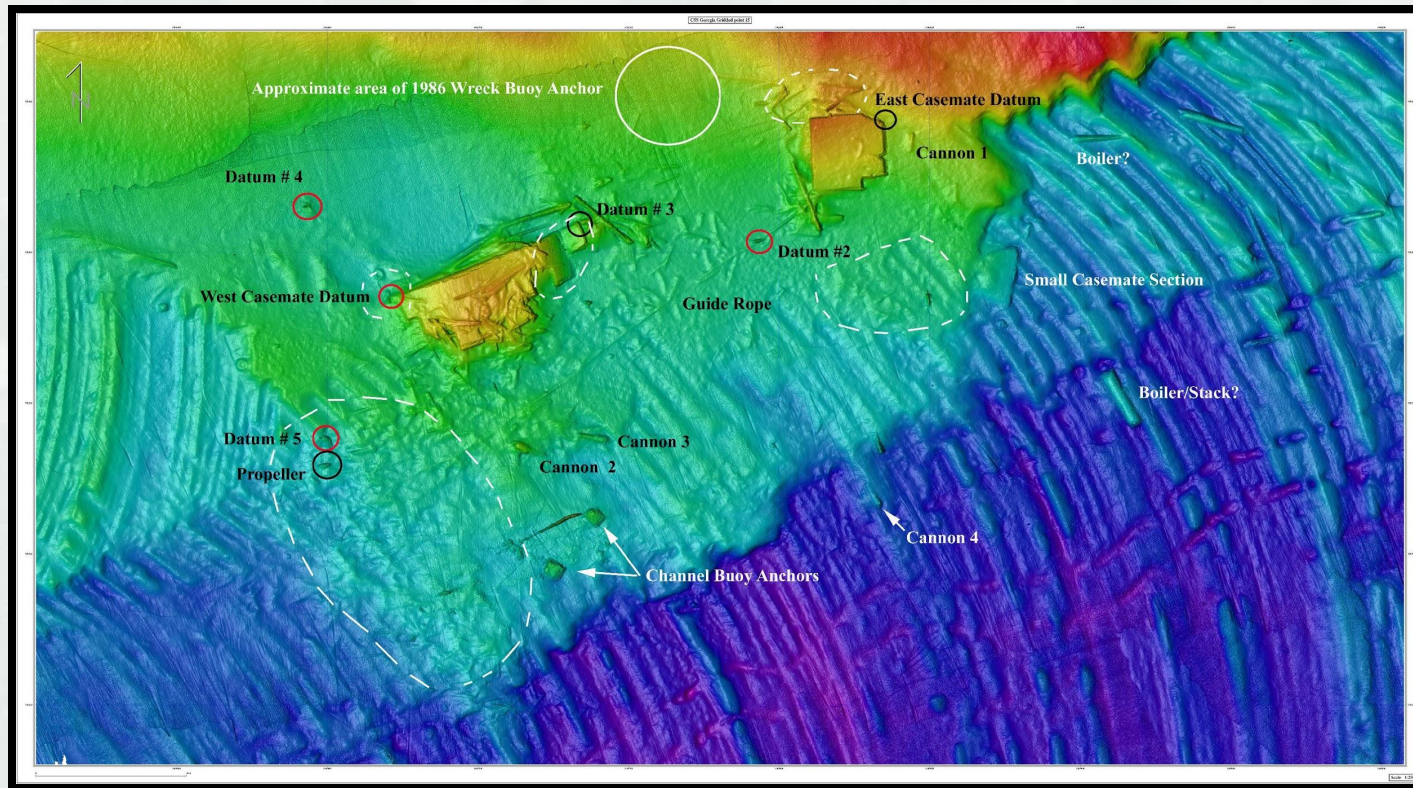
HEAVY LIFT / LARGE RECOVERY PHASE BY SUPSALV

- **Objective 1—Engineering Coordination**
- **Objective 2—Large Artifact Recovery**
- **Objective 3—Small Casemate Section Recovery**
- **Objective 4—East Casemate Section Recovery**
- **Objective 5—West Casemate Section Recovery**

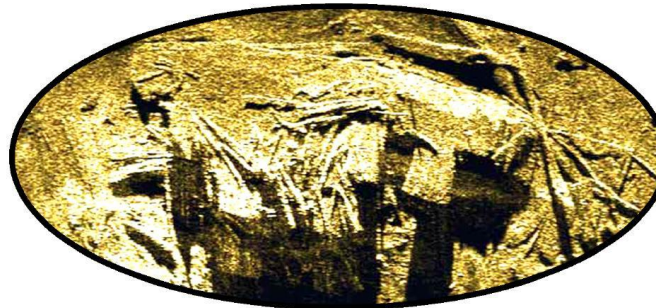


BUILDING STRONG®

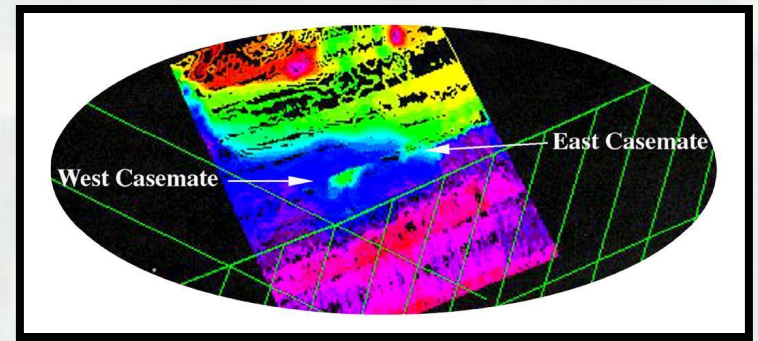
Large Recovery Items



West Casemate



BUILDING STRONG®



POTENTIAL OPTIONAL METHODS

MECHANIZED RECOVERY

CLAM SHELL EXCAVATIONS

REASONS FOR

INABILITY TO EXCAVATE

INABILITY FOR 100% DIVER RECOVERY

REDEPOSITION OF SELECTED ARTIFACTS

REASONS FOR:

REDUNDANT ARTIFACTS

LIMITED RESEARCH POTENTIAL



BUILDING STRONG®

Conservation Methods

ARTIFACT FIELD STABILIZATION, ACCESSIONING, STORAGE, AND SHIPMENT

ORDNANCE—PROPOSED PROCESSING

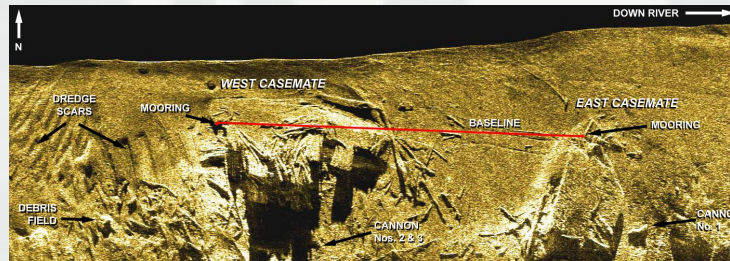
*ARTIFACT SHIPMENT TO THE CONSERVATION RESEARCH LABORATORY
AT TEXAS A&M UNIVERSITY*



BUILDING STRONG®

Public Involvement / Outreach

- Television/Print/Electronic Media (Local, National News outlets)
- Facebook/Twitter/You Tube/Blogs
- On/Off Site Press Briefings
- USACE WEB Site Addition
 - ▶ <http://www.sas.usace.army.mil/Missions/CivilWorks/SavannahHarborExpansion/CSSGeorgia.aspx>
- Local School participation – Lesson Plans
- 2 Public Lectures During and After Fieldwork
- Public Viewing Day Festival at Fort Jackson
- A Teachers' Institute
- Materials for a CSS Georgia exhibit booth
- A Traveling Trunk
- A Digital Curricula Library
- A Video Documentary
- And an Archaeology Month Poster



BUILDING STRONG®

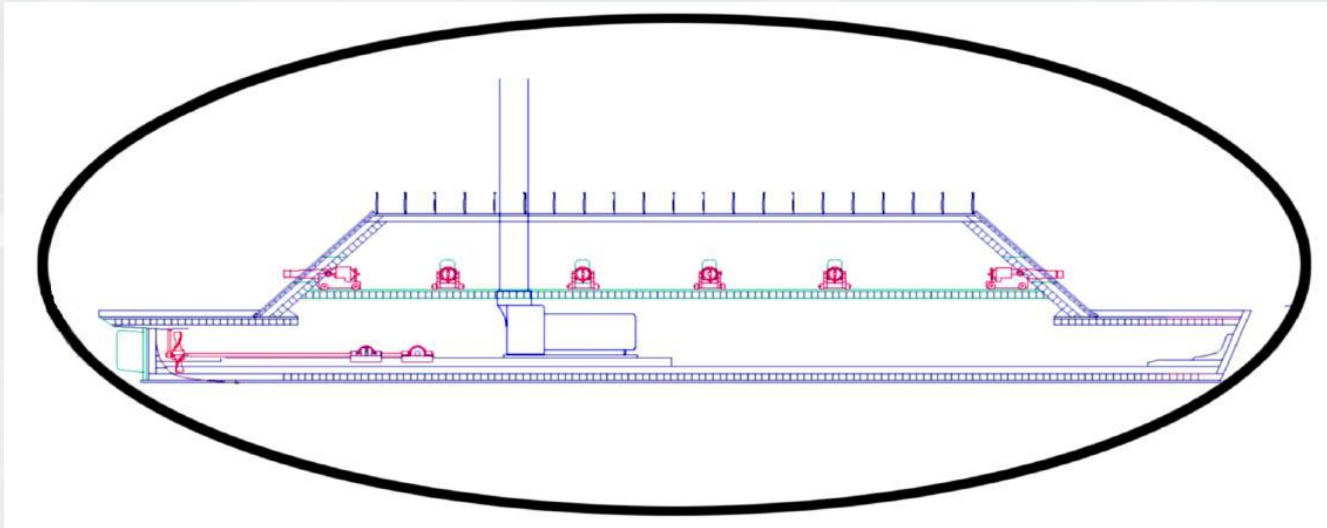
Presentation of Results

PREPARATION OF REPORTS

AMENDMENTS TO THE NRHP FORM

ARCHAEOLOGICAL CONFERENCES

CONSERVATION MASTERS/DOCTORAL THESIS



BUILDING STRONG®

THANK YOU



BUILDING STRONG®