

Why we conserve artifacts, the CSS Georgia story.

Jim Jobling

Conservation Research Lab

Texas A&M University

SHA Conference 2016

Washington, D.C.



Savannah
DISTRICT



US Army Corps of Engineers
BUILDING STRONG®



BUILDING STRONG®



BUILDING STRONG®



Oops, that's only about 100, we have more than 240.



BUILDING STRONG®



BUILDING STRONG®



BUILDING STRONG®



BUILDING STRONG®



BUILDING STRONG®



CSS GEORGIA
09/16/15
G54



BUILDING STRONG®



CSS GEORGIA
09/16/15
G54-CRL



BUILDING STRONG[®]



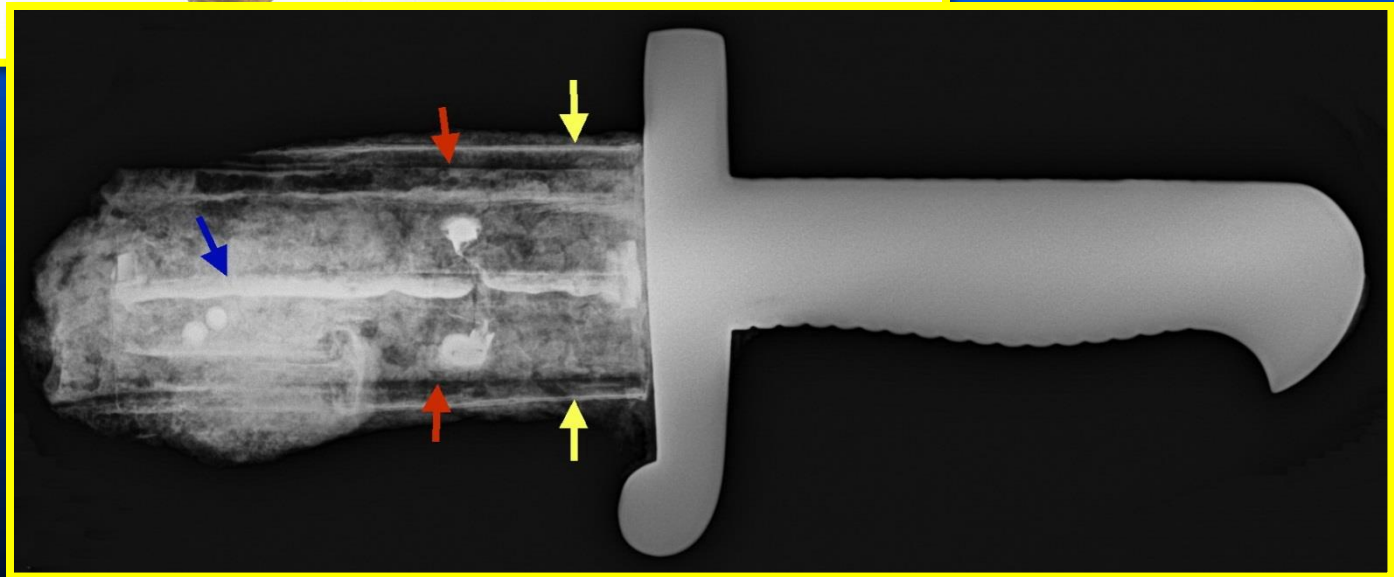
CSS GEORGIA
09/16/15
G54-2



BUILDING STRONG®



BUILDING STRONG®



BUILDING STRONG®



BUILDING STRONG®



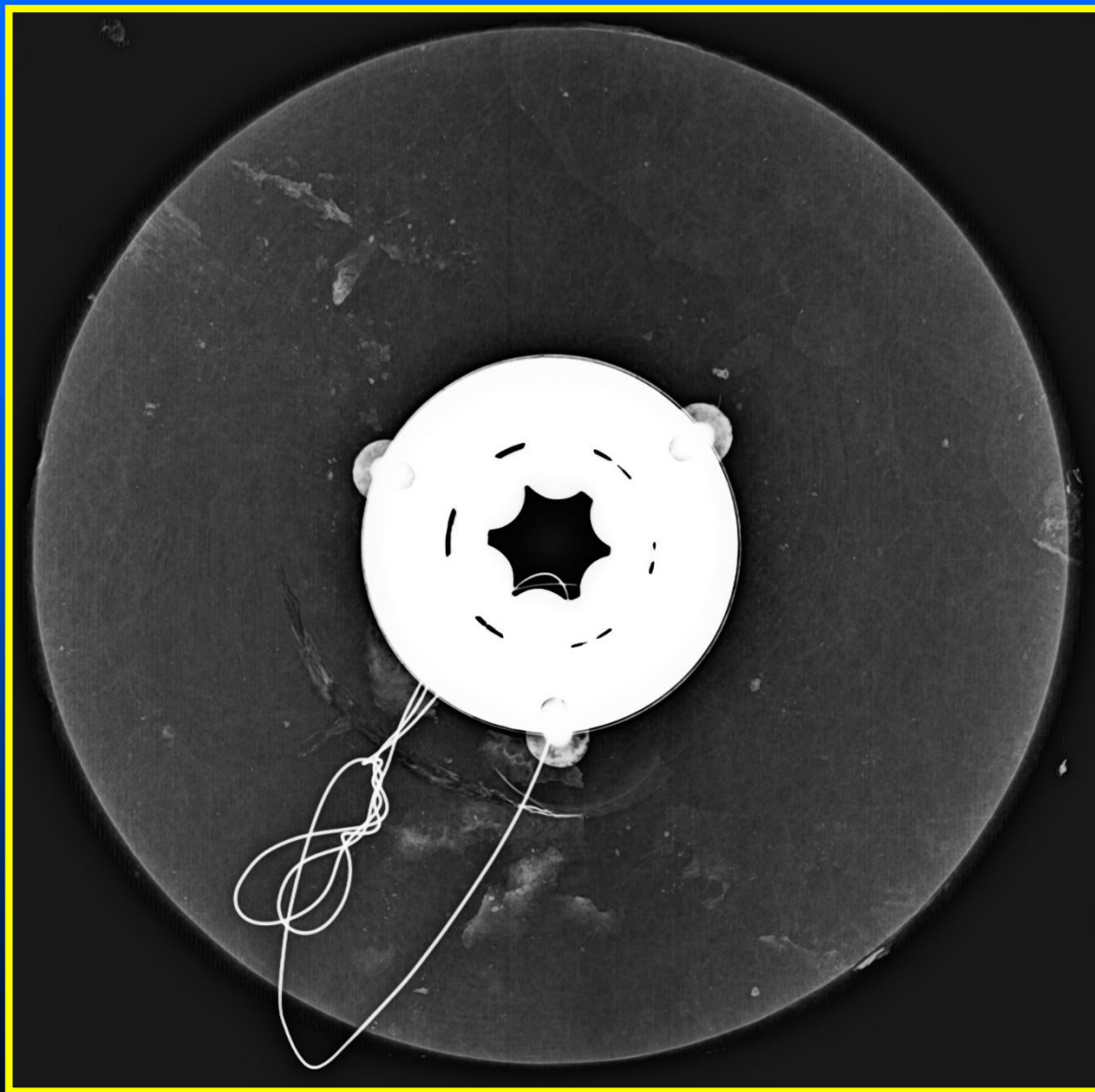
CSS GEORGIA 2898.4



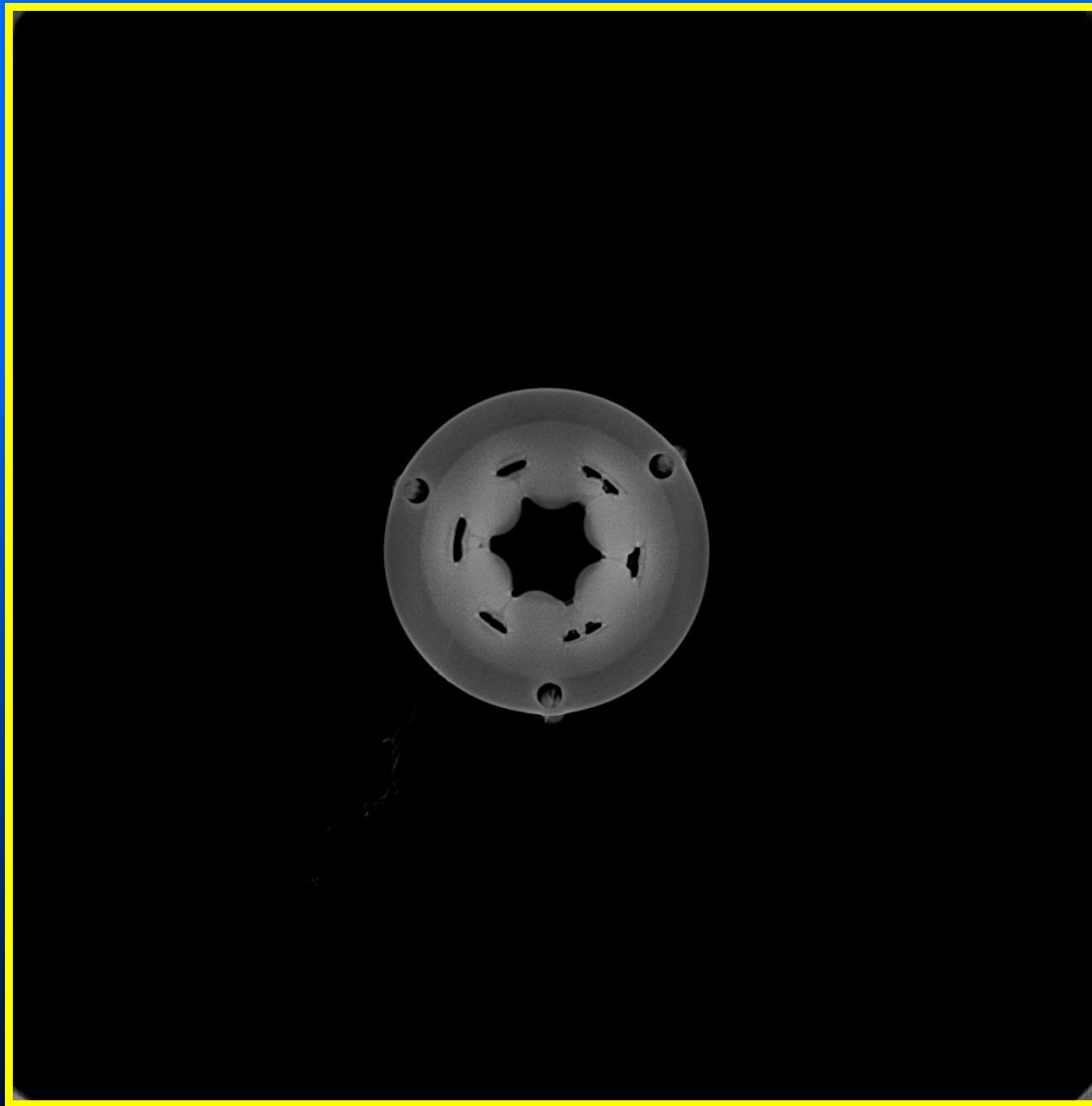
BUILDING STRONG®



BUILDING STRONG®



BUILDING STRONG®



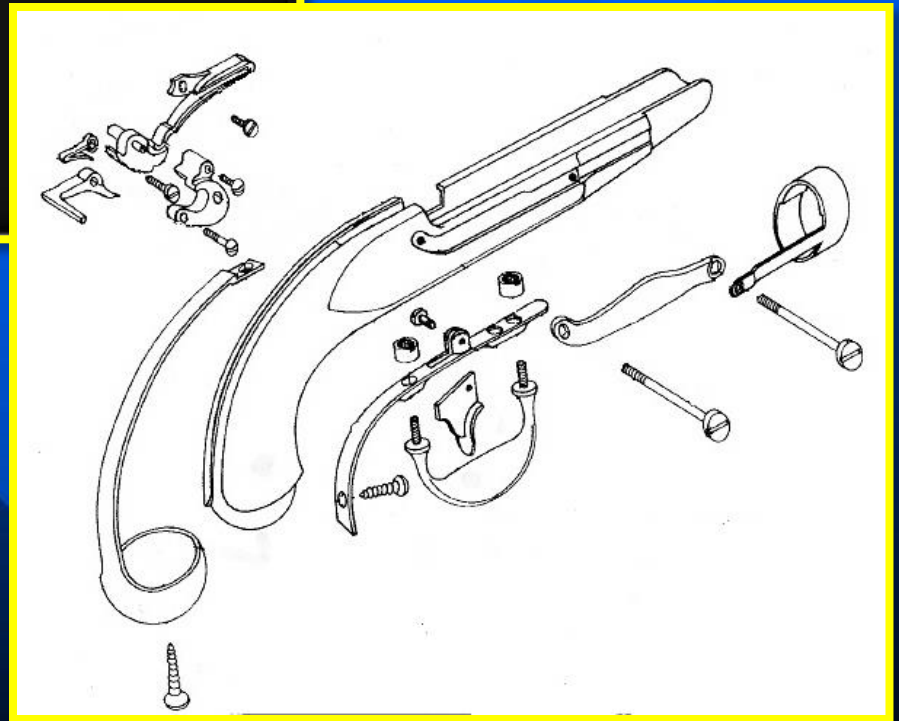
BUILDING STRONG®



CSS GEORGIA G619 3263.1



BUILDING STRONG®



BUILDING STRONG®

USS Westfield IX Inch Dahlgren



BUILDING STRONG



BUILDING STRONG[®]

Heroine machinery, 1838.



BUILDING STRONG[®]

Thank You

Conservation Research Lab
Artifact Conservation Information
- <http://nautarch.tamu.edu/crl/>

Jim Jobling
crl@tamu.edu
(979) 862-7791



BUILDING STRONG®



BUILDING STRONG®