

CSS Georgia and Research that Preceded Mitigation

Gordon P. Watts

Tidewater Atlantic Research

SHA Conference 2016

Washington, D.C.

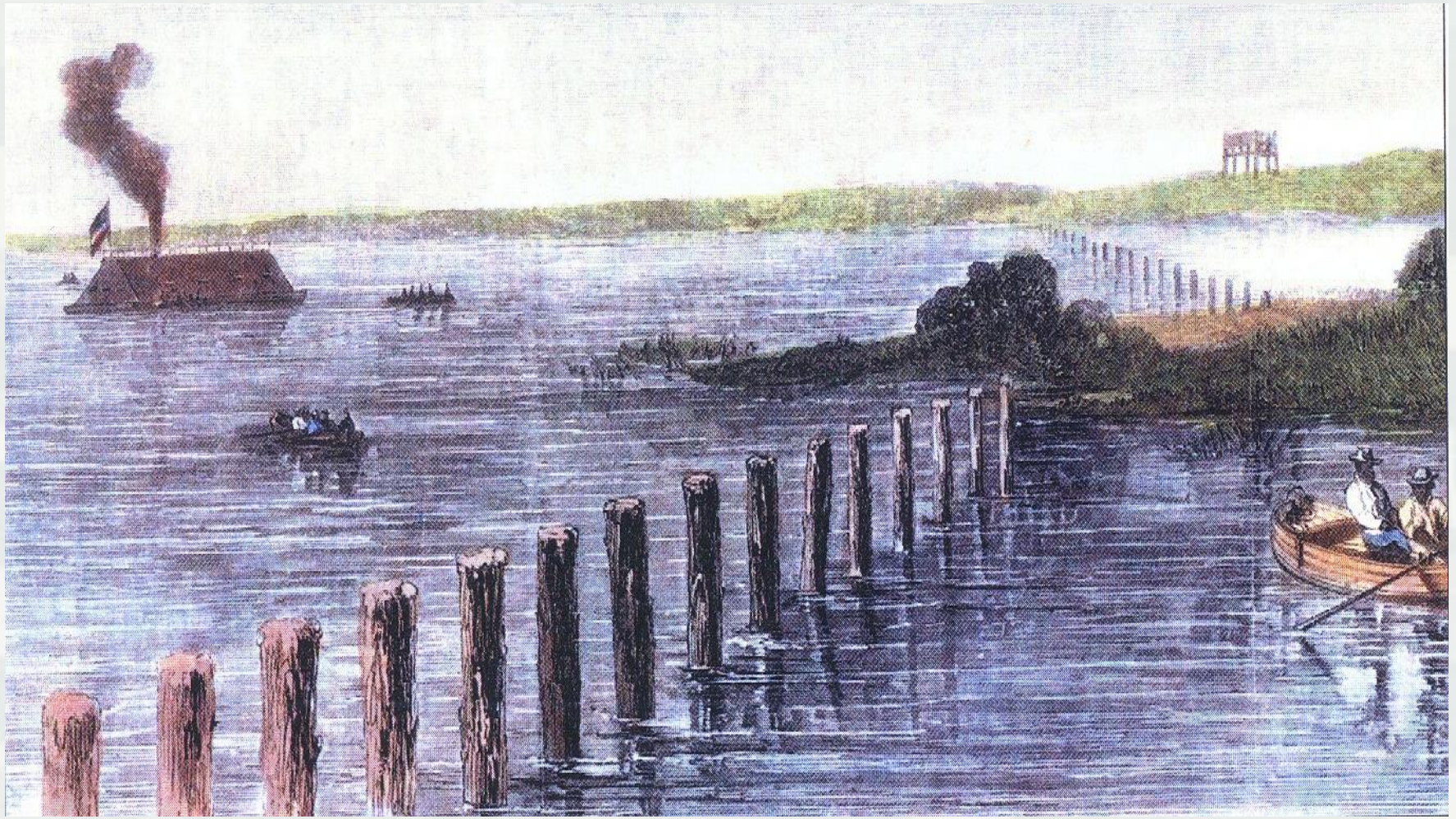


Savannah
DISTRICT

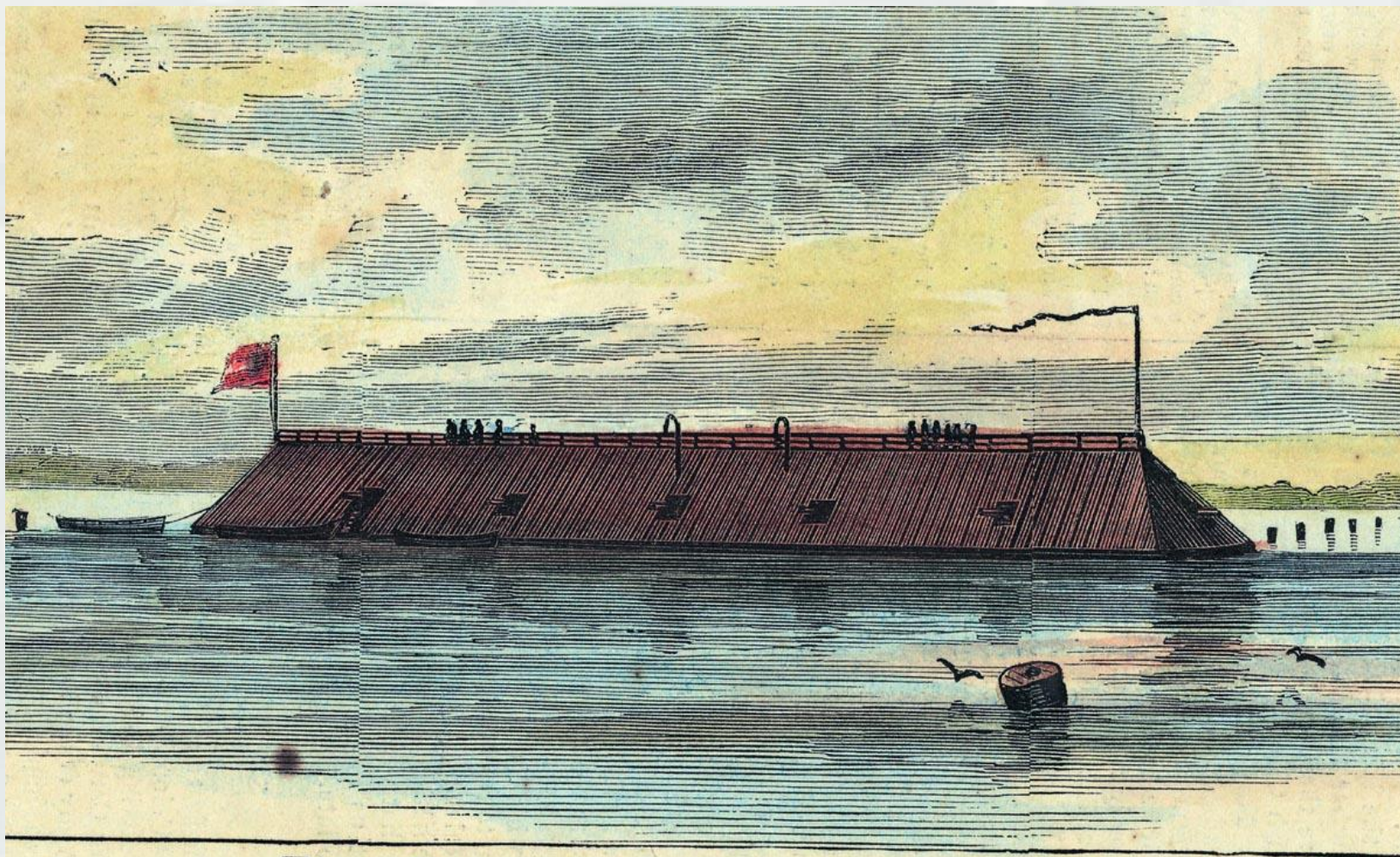


US Army Corps of Engineers
BUILDING STRONG®





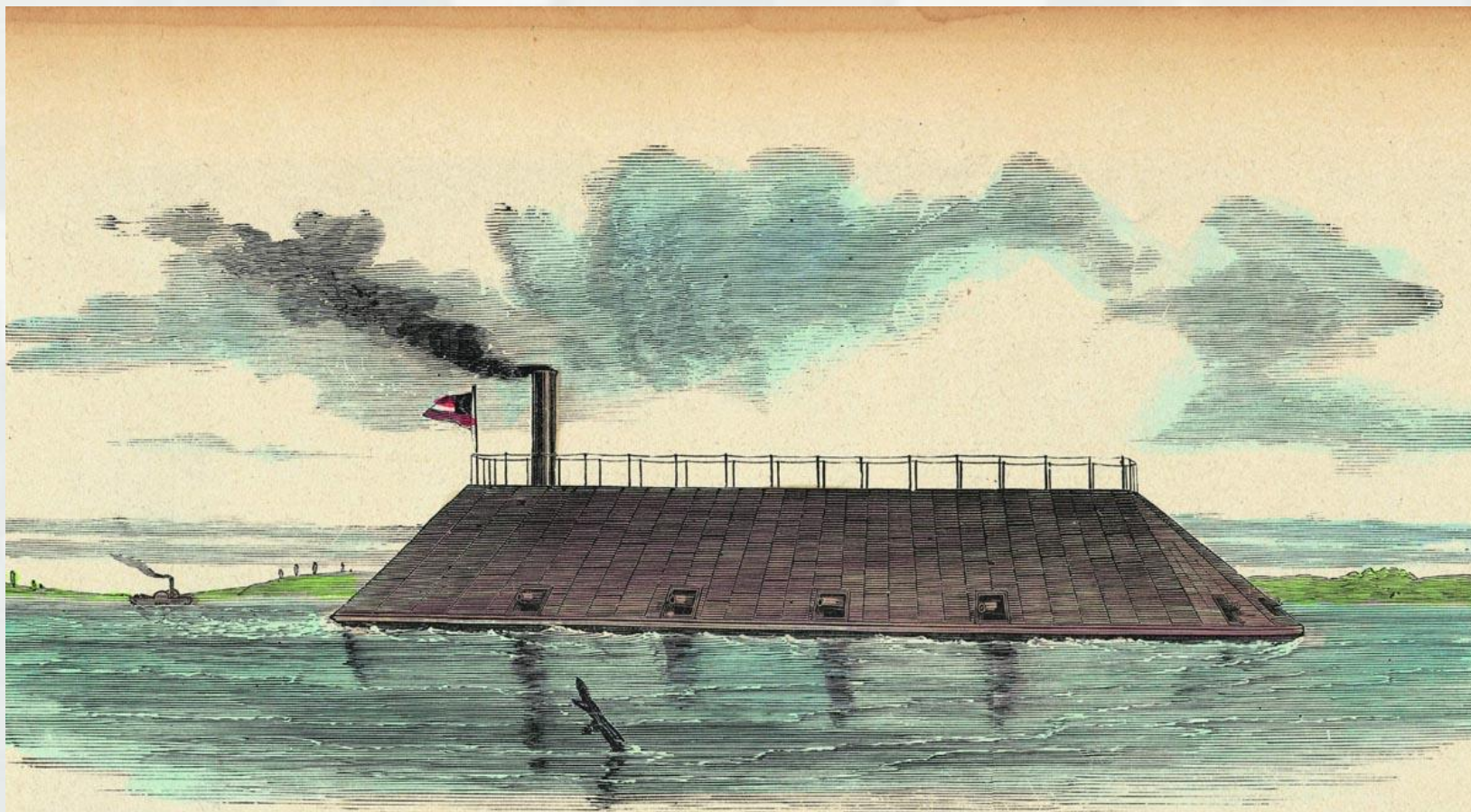
BUILDING STRONG®



The Rebel Iron-clad "Georgia."



BUILDING STRONG®

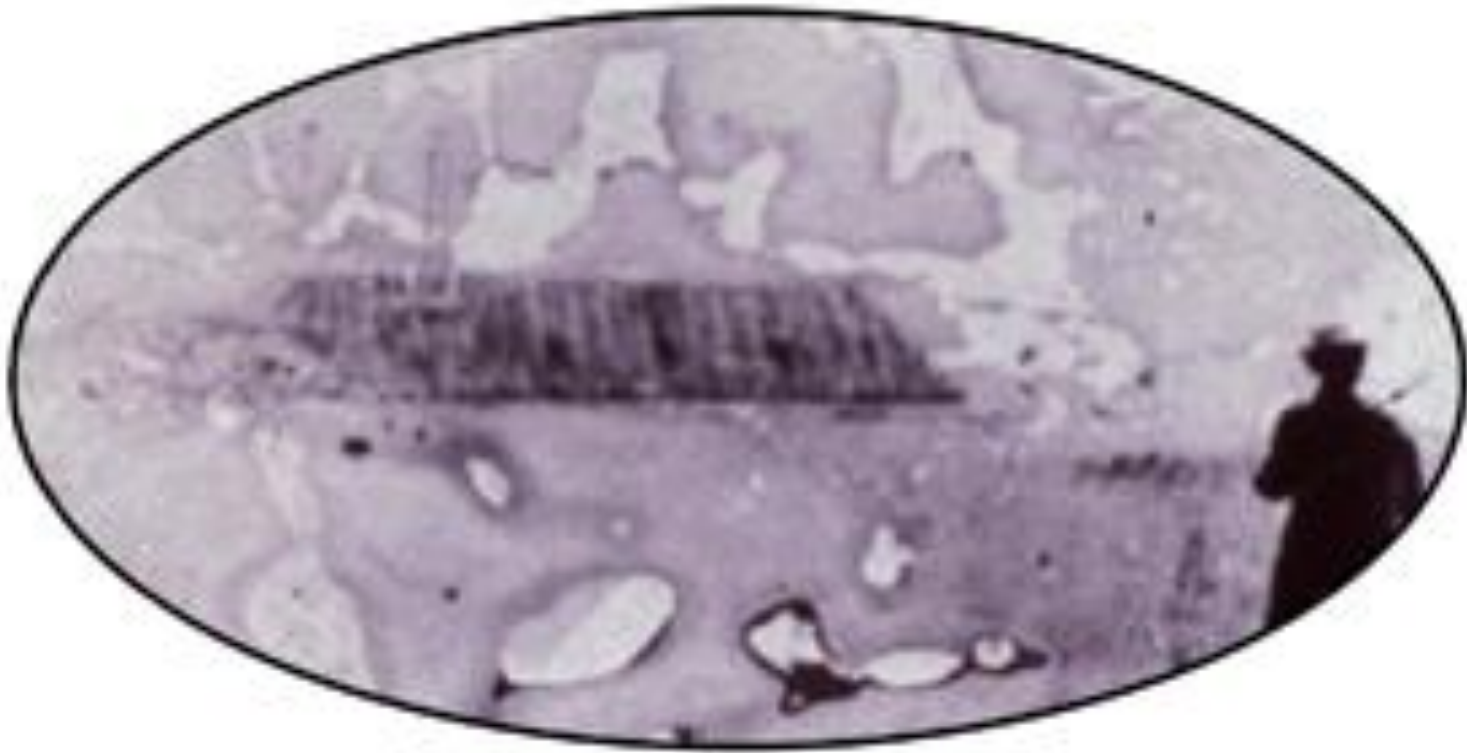


CONFEDERATE IRONCLAD RAM "GEORGIA" LYING OFF FORT JACKSON, SAVANNAH RIVER, GA., DECEMBER, 1862.



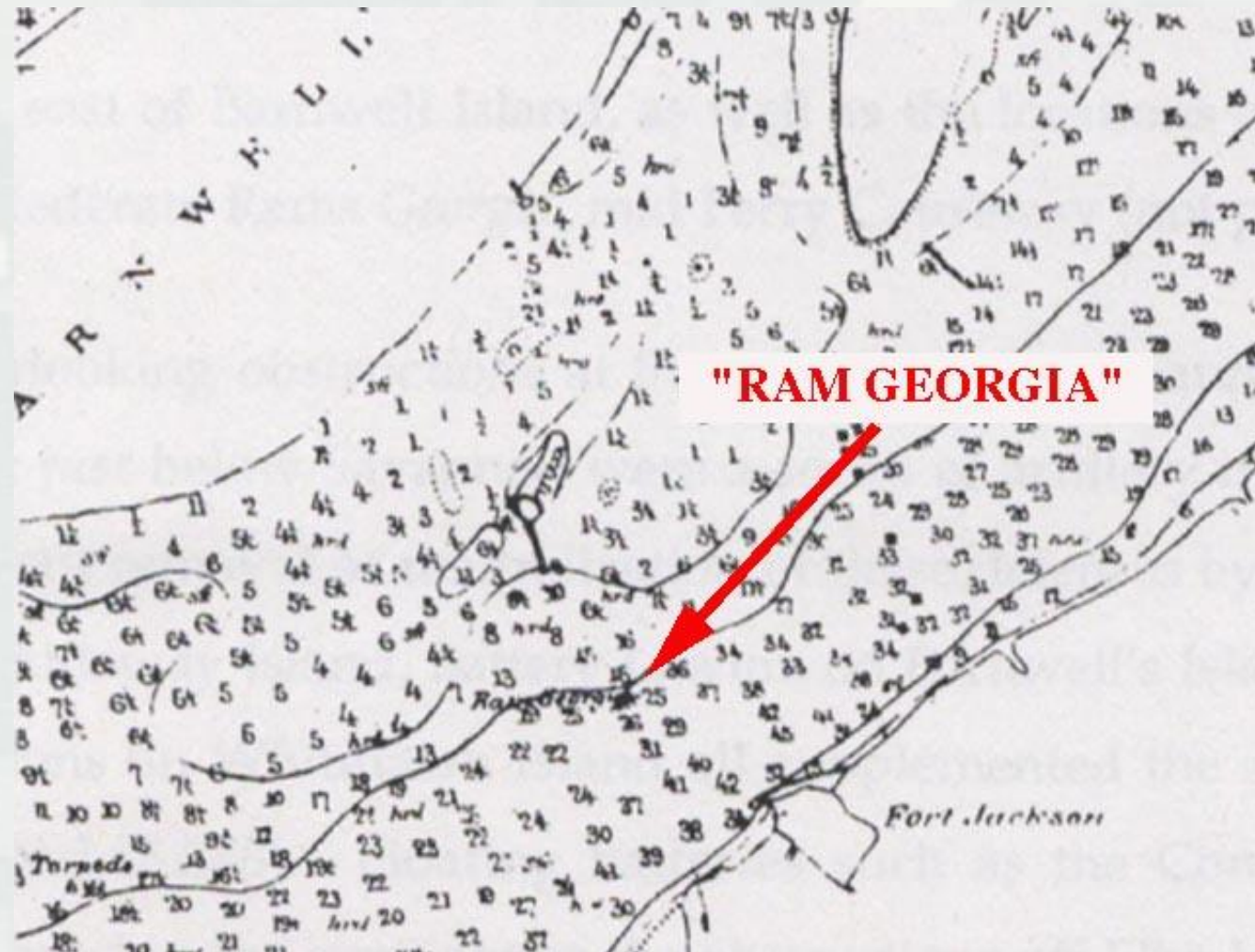
BUILDING STRONG®

Photographic Image of CSS Georgia (or NOT)



BUILDING STRONG®

1872 U.S. Coast Survey Chart Showing CSS Georgia



BUILDING STRONG®



CSS Georgia Wreck Remains Struck by Dredge St. Louis in 1968



BUILDING STRONG®

1978 USACE/SCIAA Wreck Site Reconnaissance



BUILDING STRONG®

Railroad Rail Sample Recovered by TAMU/USACE in 1979

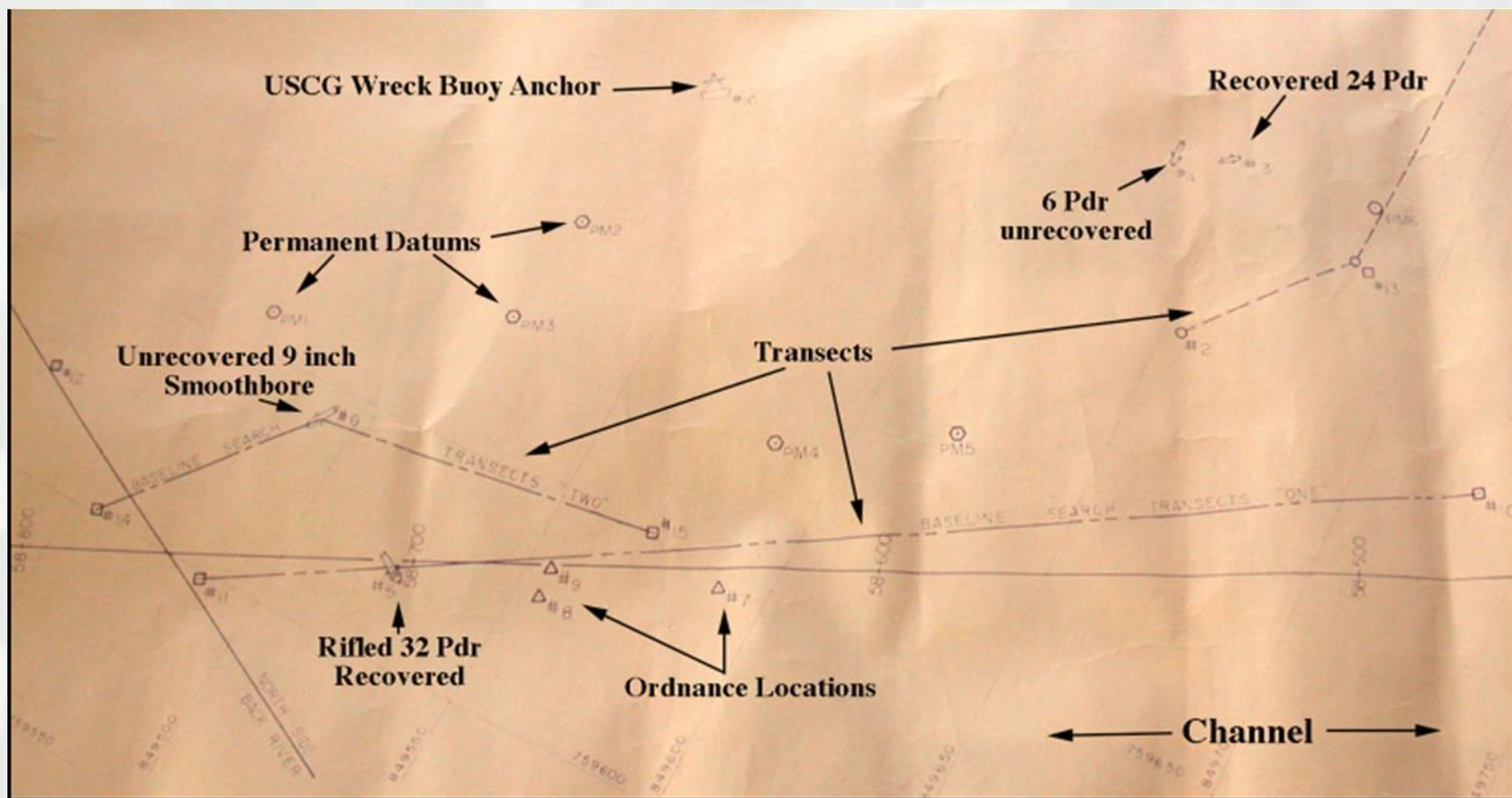


BUILDING STRONG®

Small Cannon Recovered in 1986 by USACE Divers



BUILDING STRONG®



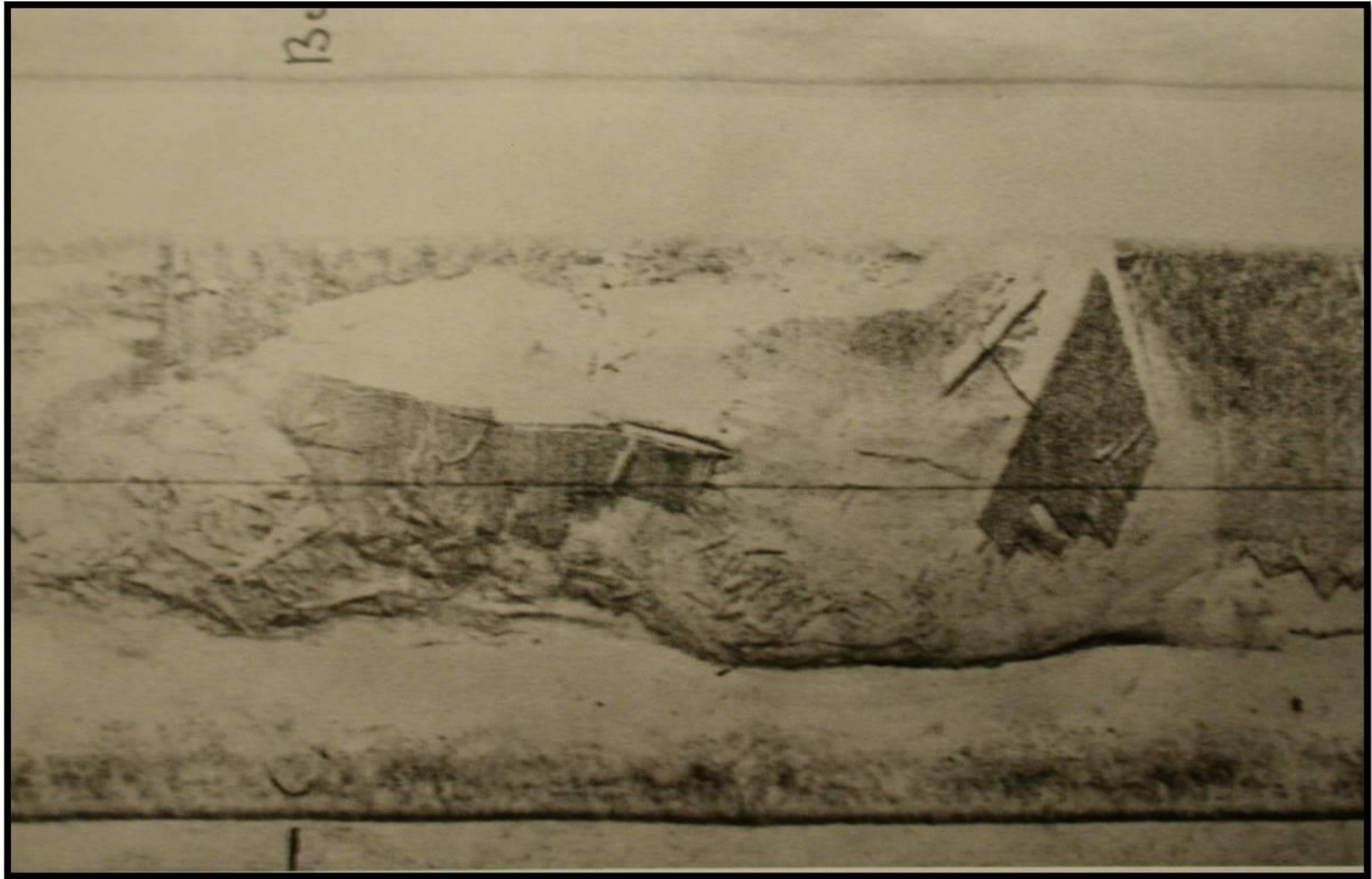
1986 USACE Site Plan

1986 USACE Sonar Survey



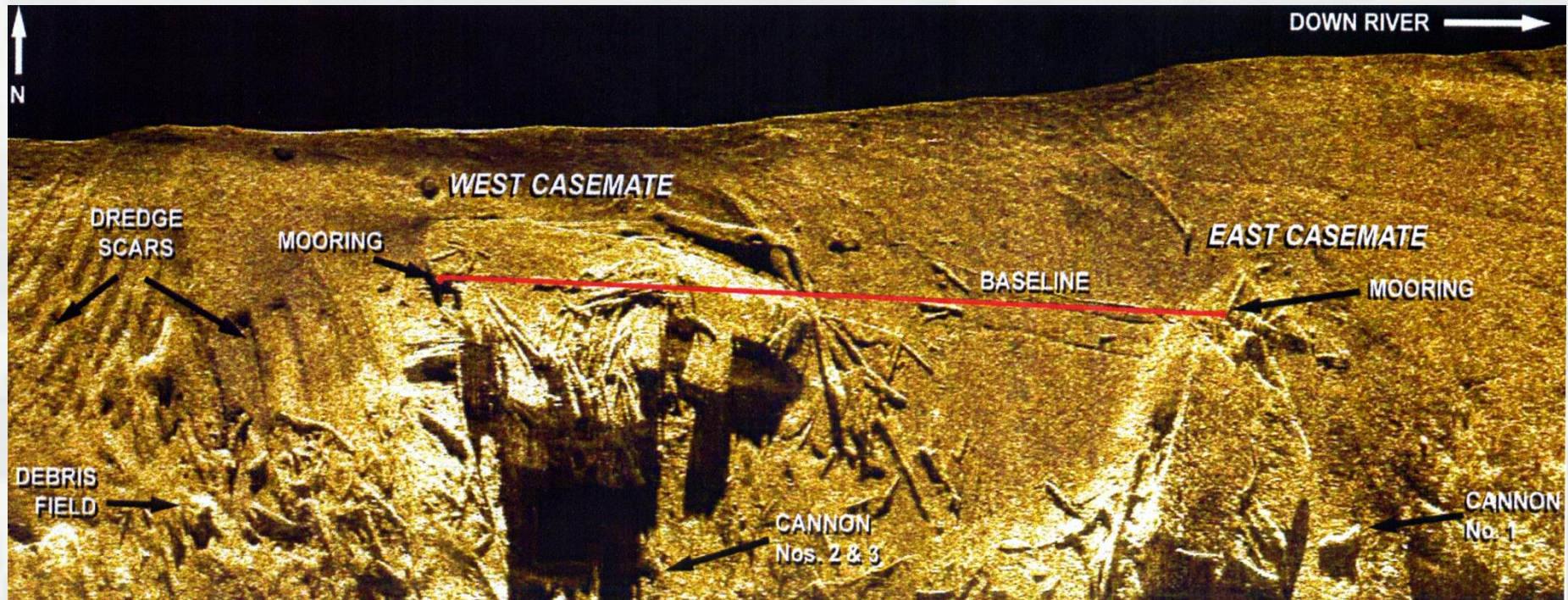
BUILDING STRONG®

1986 Sonar Image of the CSS *Georgia* Site



BUILDING STRONG®

2003 Survey Web Baseline on Sidescan Sonar Wreck Site Image



BUILDING STRONG®

R/V Nautilus



BUILDING STRONG®



BUILDING STRONG®

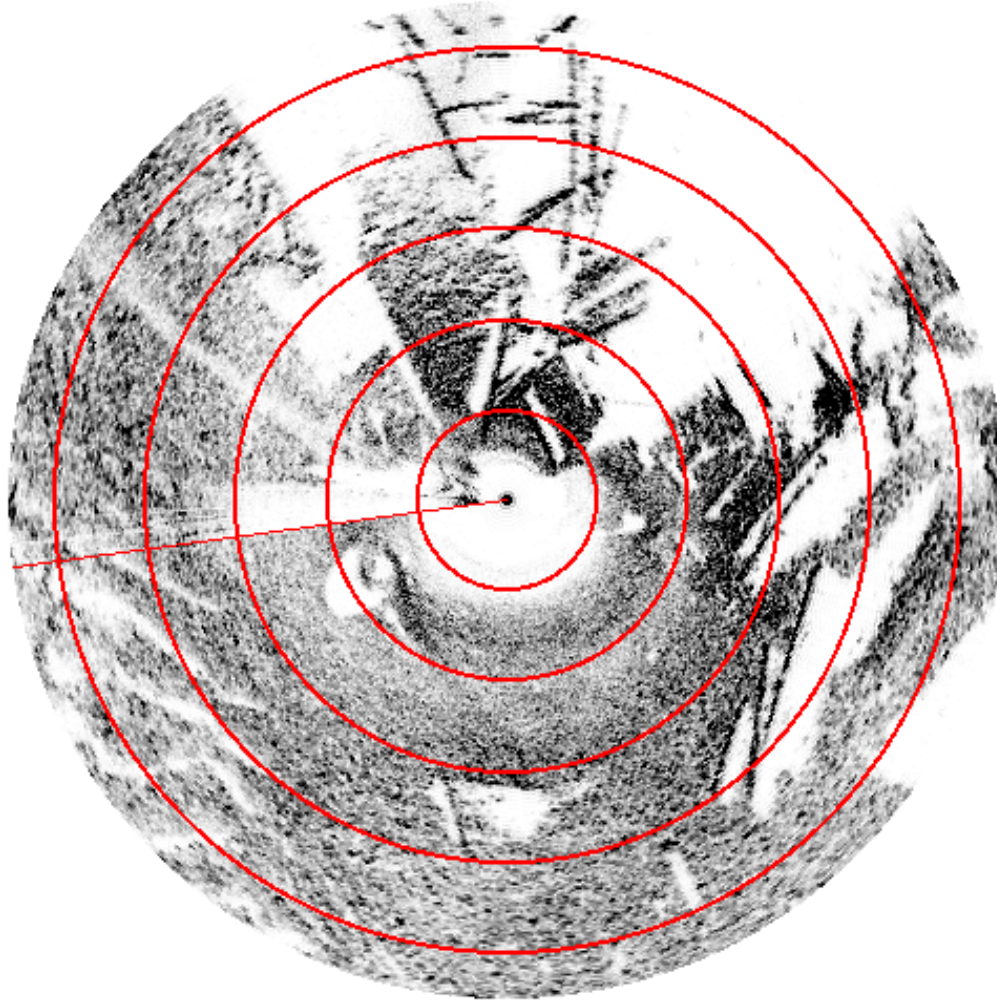
Aquameter Transducer Array



BUILDING STRONG®

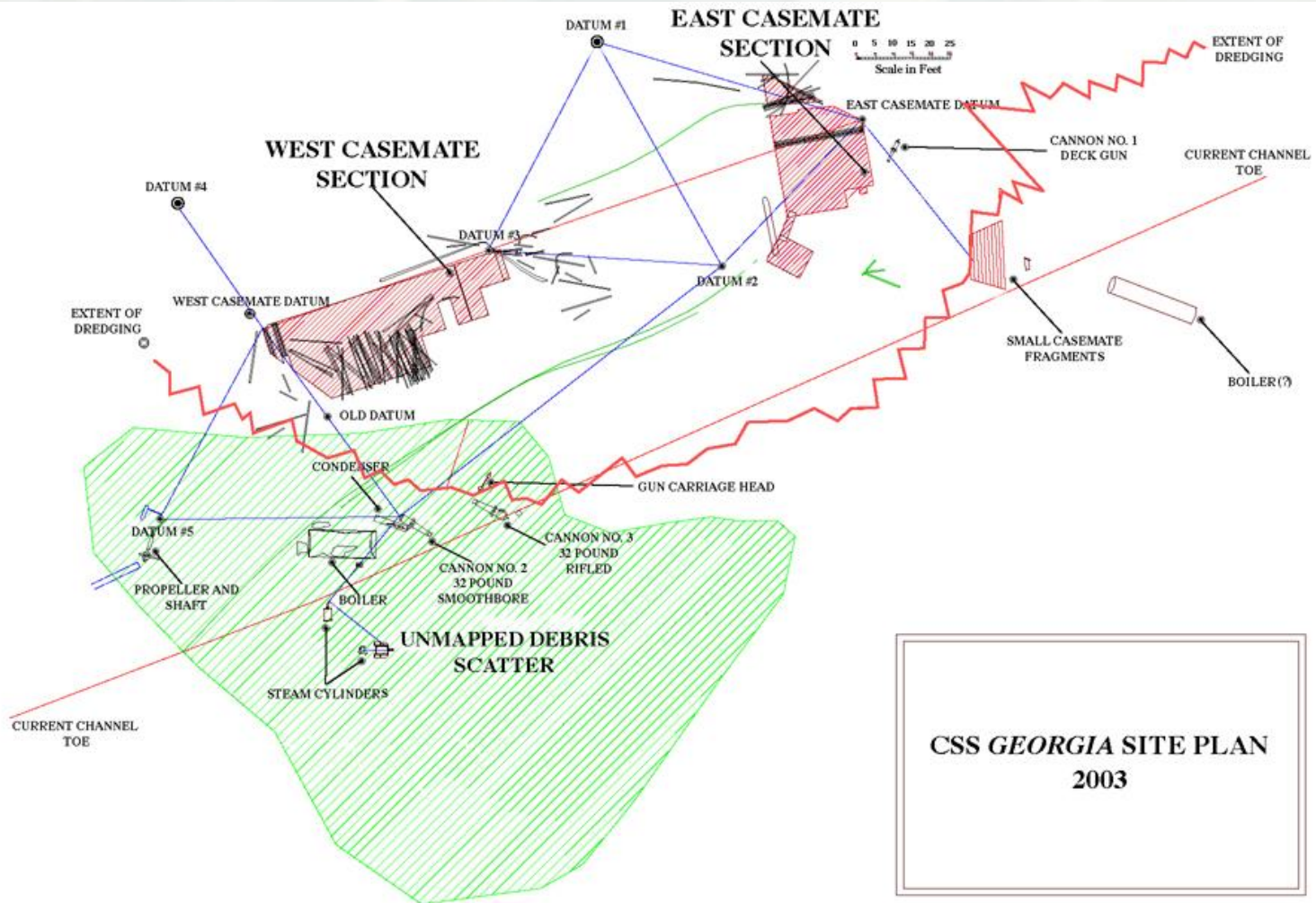
Mesotech Sector Scan Sonar Image

6 ft/div

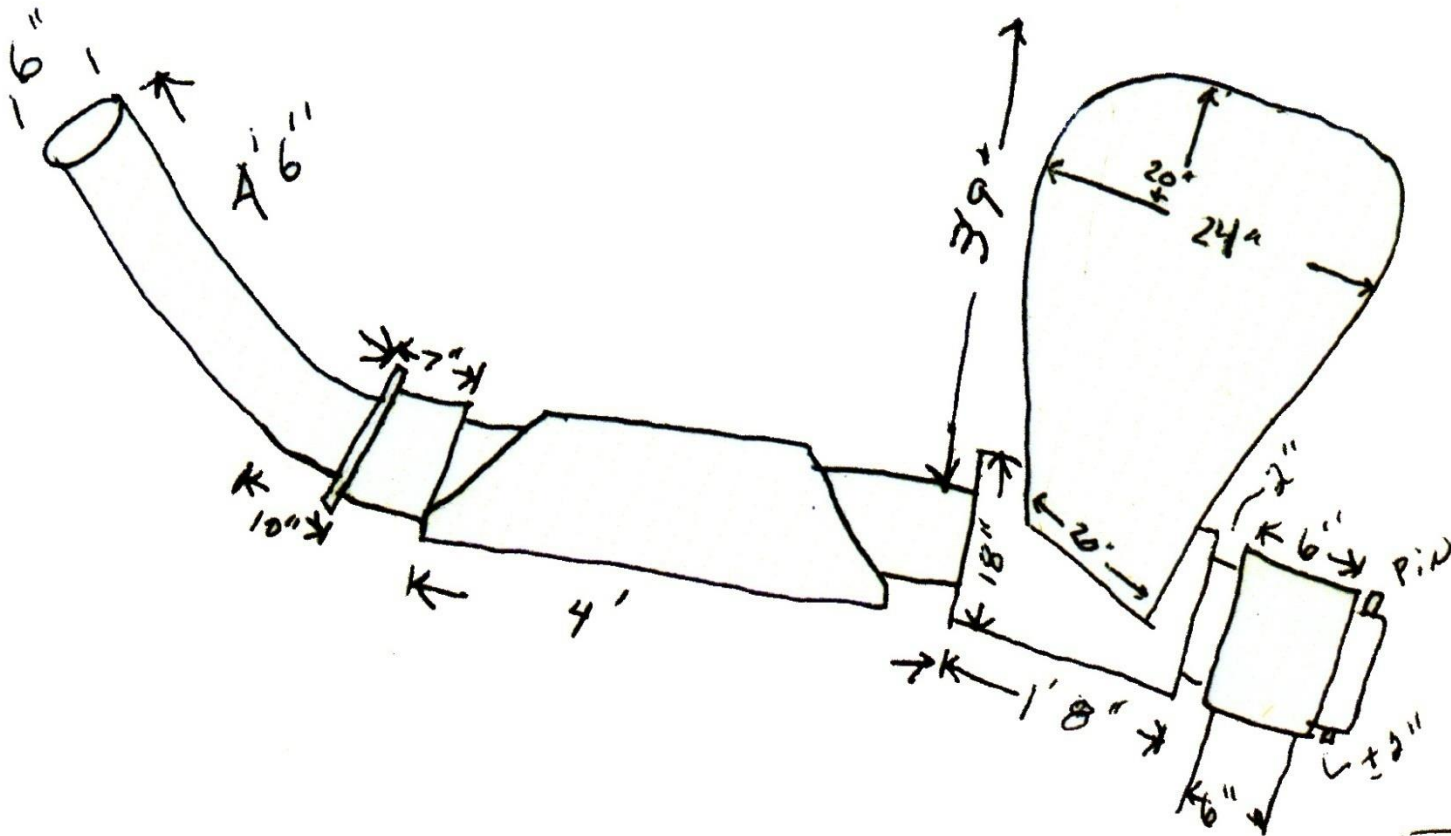


BUILDING STRONG®

2003 Site Plan for the CSS *Georgia*



BUILDING STRONG®

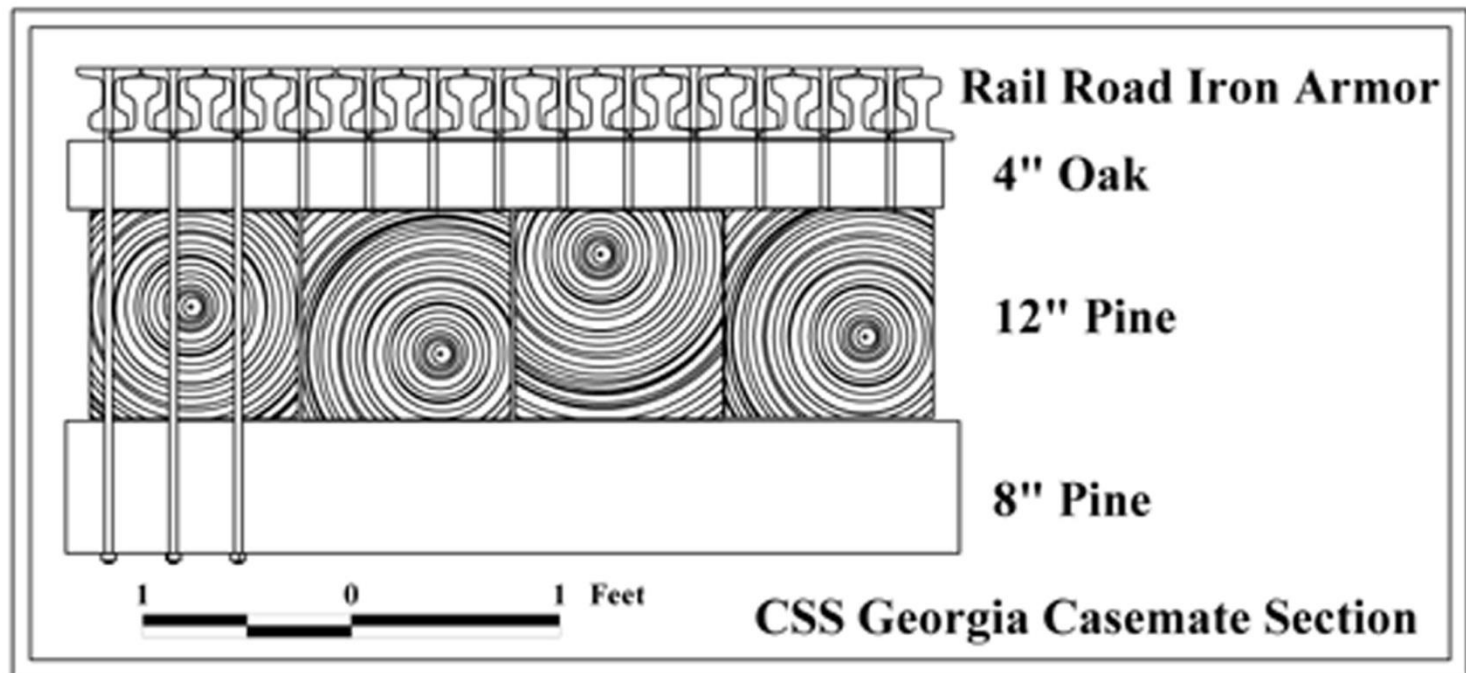


BUILDING STRONG®

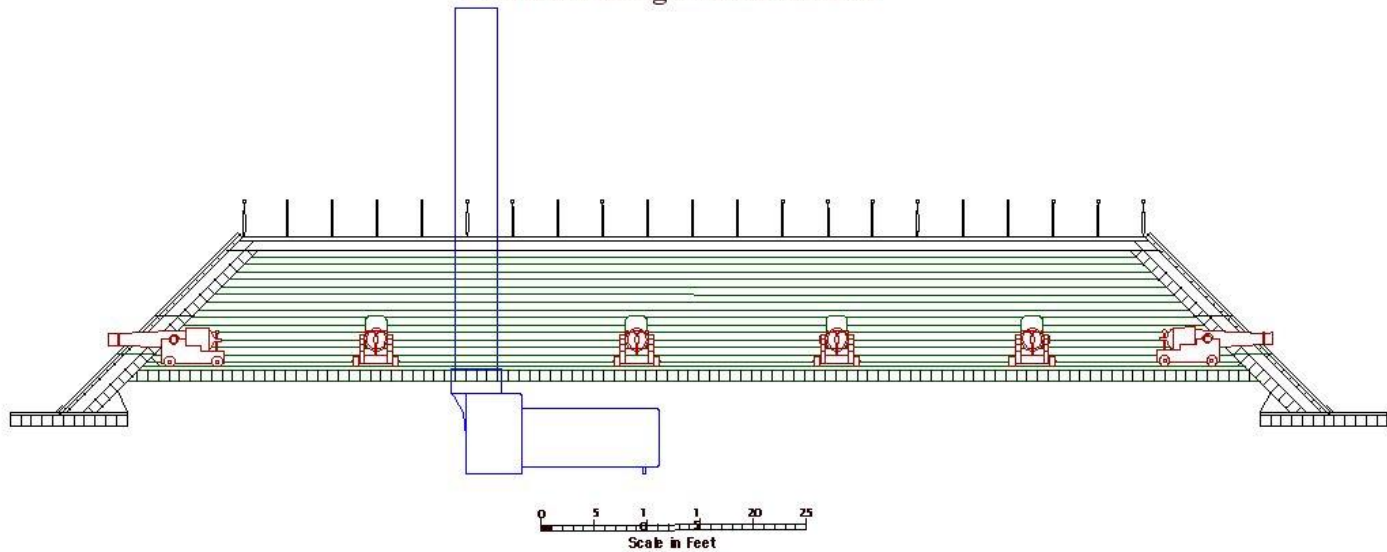


BUILDING STRONG®

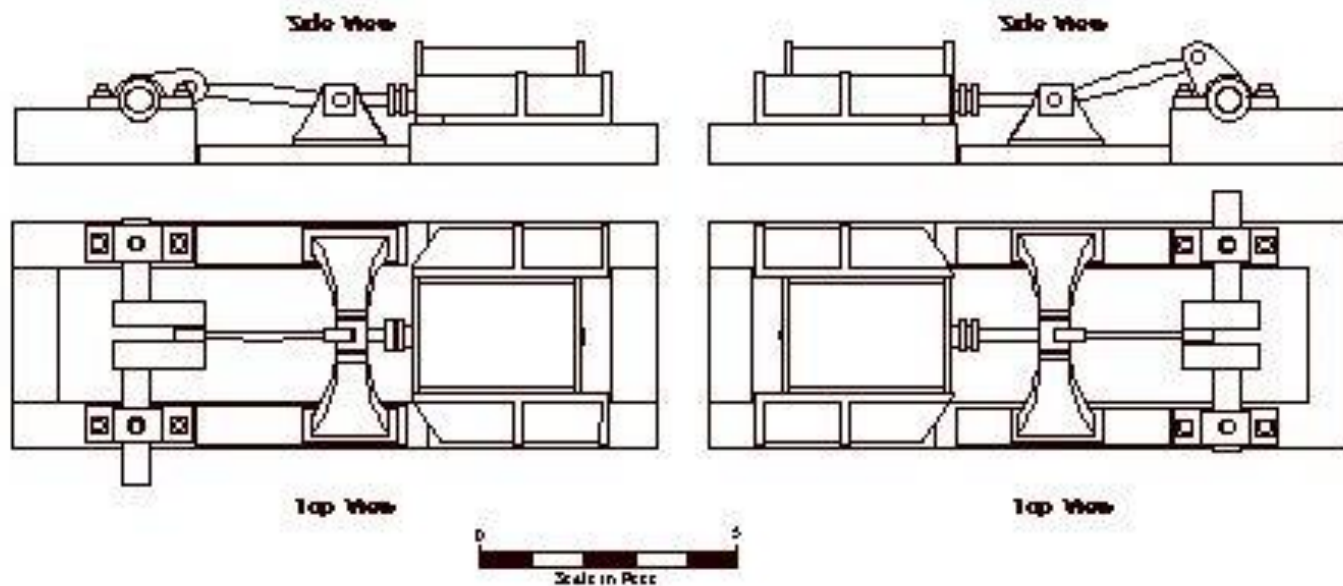
Casemate Armor Configuration

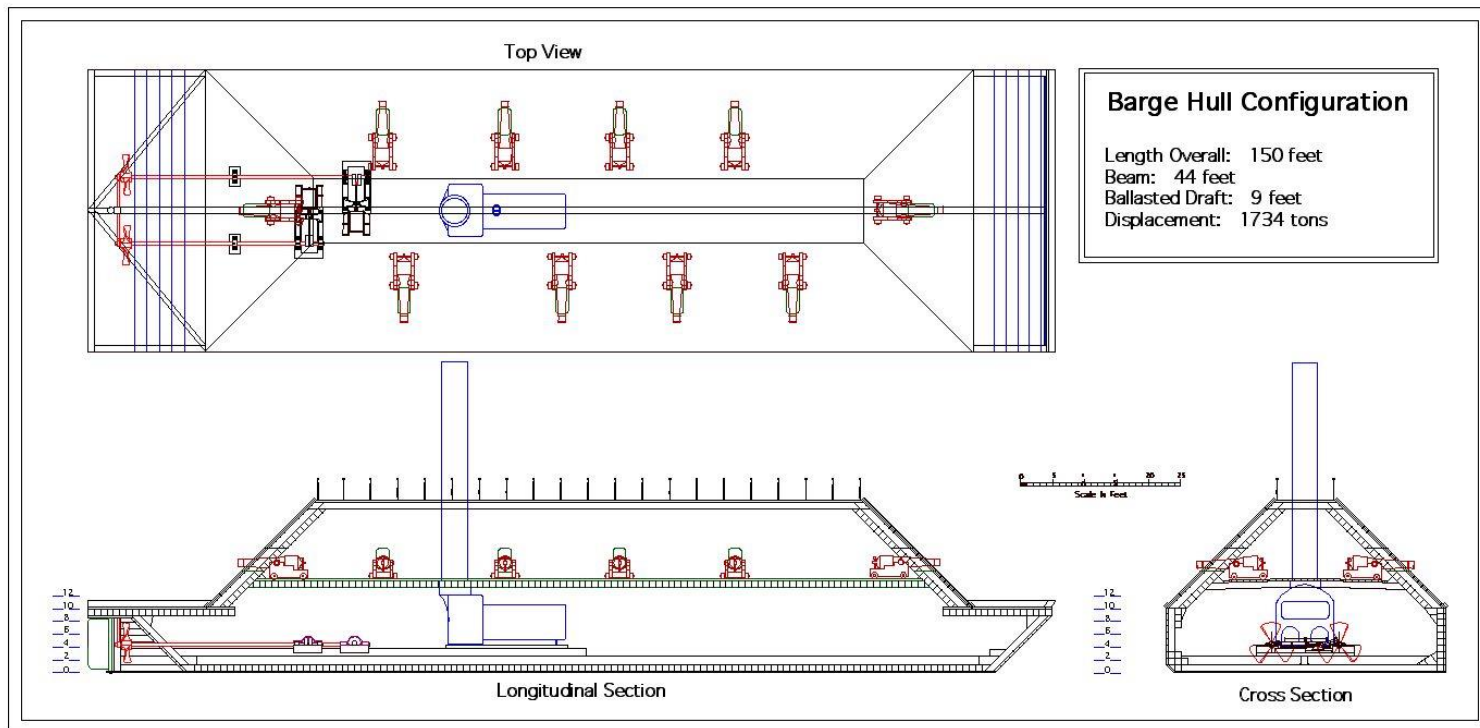


Casemate Longitudinal Section

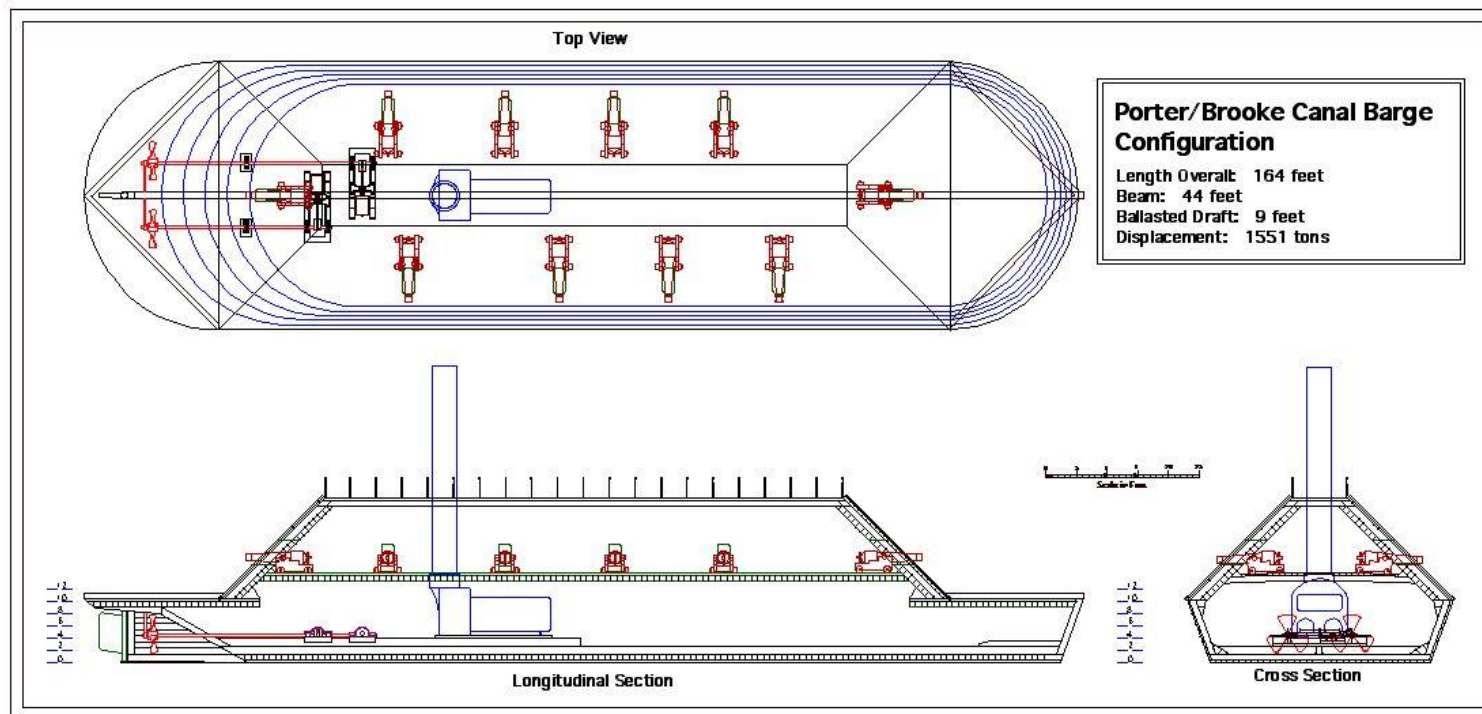


Engine Reconstruction





BUILDING STRONG®




BUILDING STRONG®

Rigging for 2013 Advanced Underwater Surveys (ADUS)



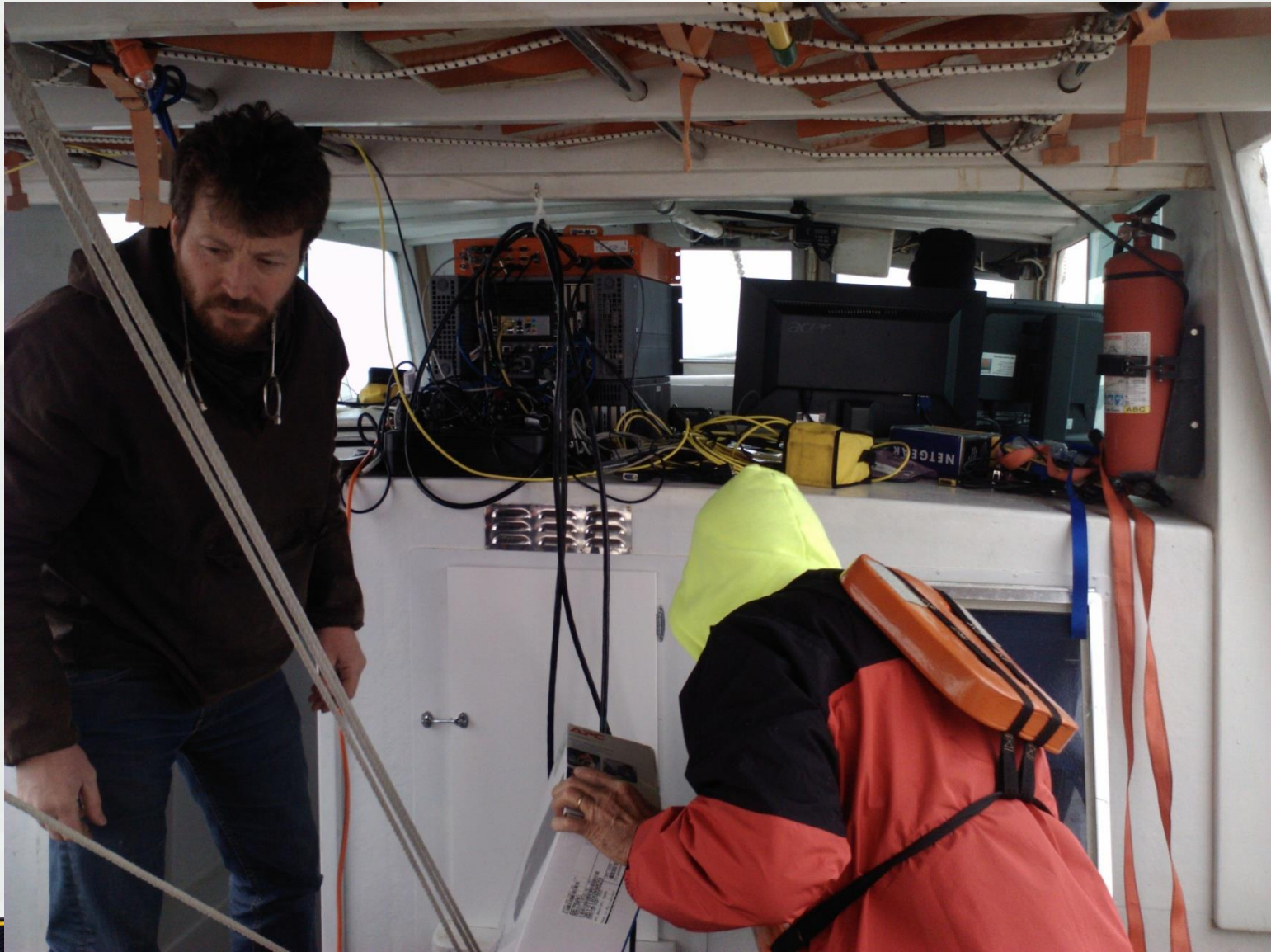
BUILDING STRONG®



 **BUILDING STRONG®**

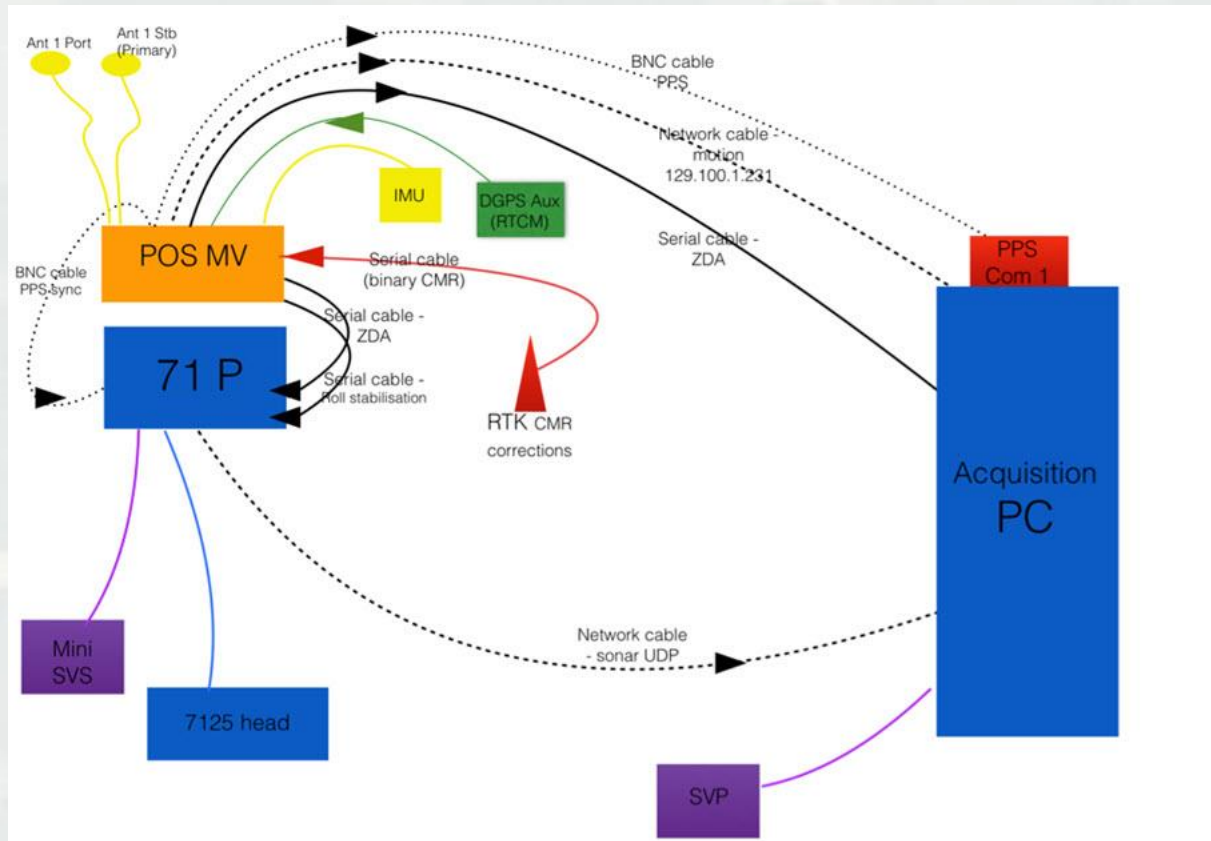


BUILDING STRONG®

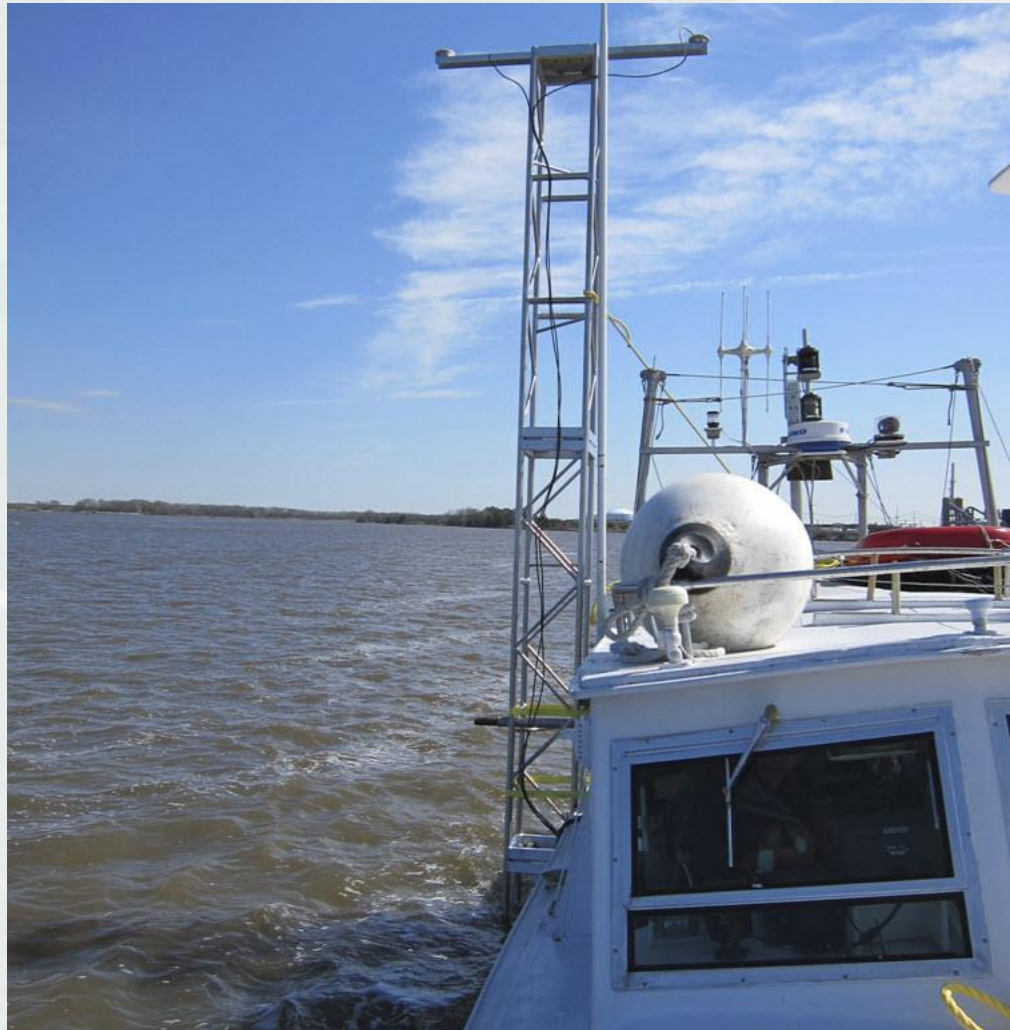


BUILDING STRONG®

ADUS Equipment Configuration



ADUS System Rotated for Operation



BUILDING STRONG®

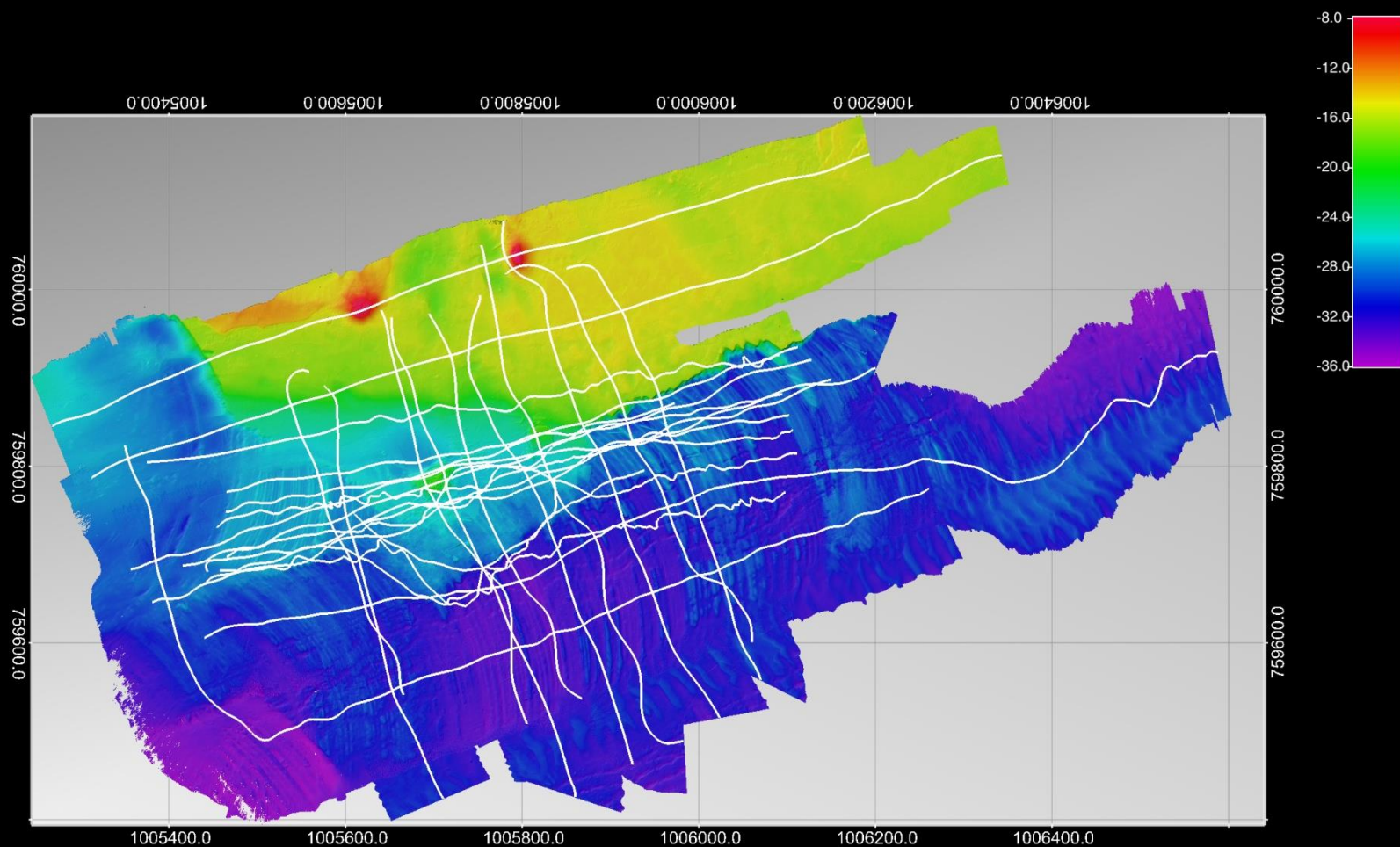


BUILDING STRONG®



BUILDING STRONG®

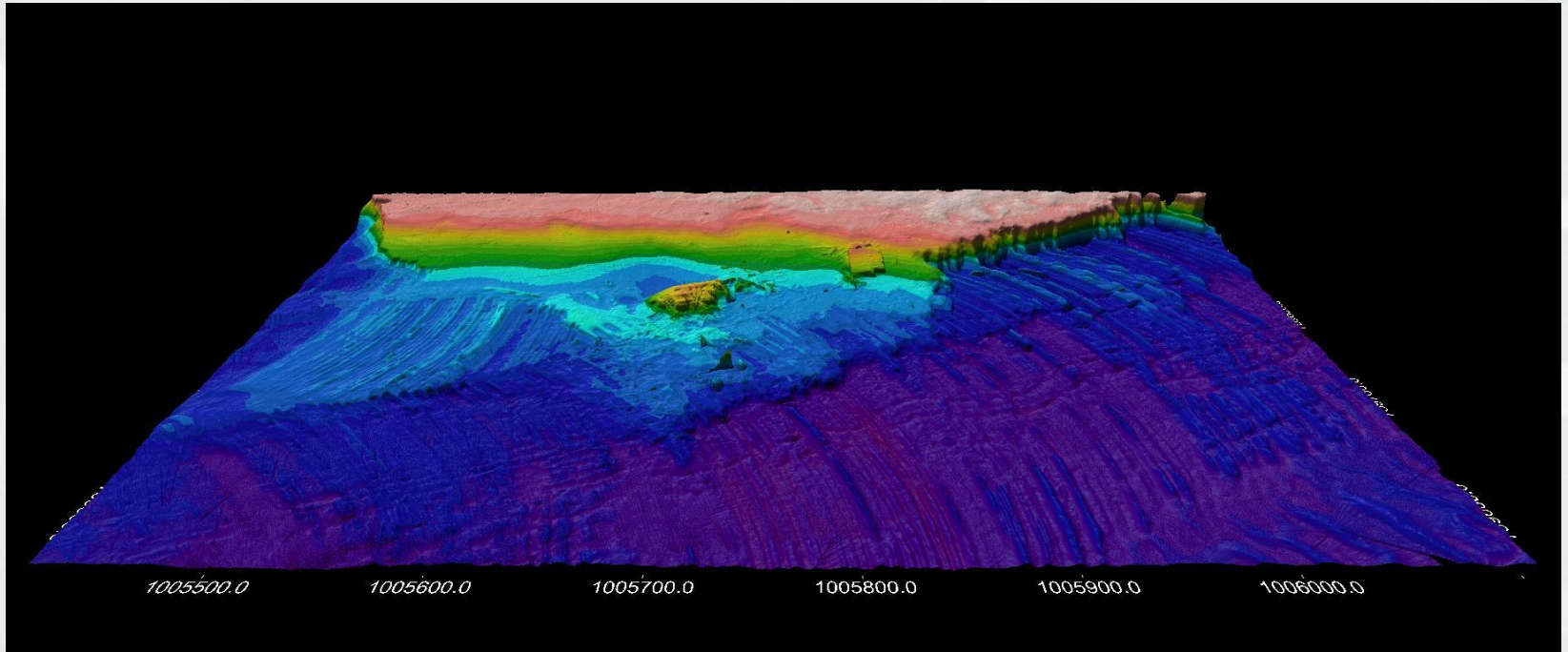
ADUS Survey Tracklines



U.S. ARMY

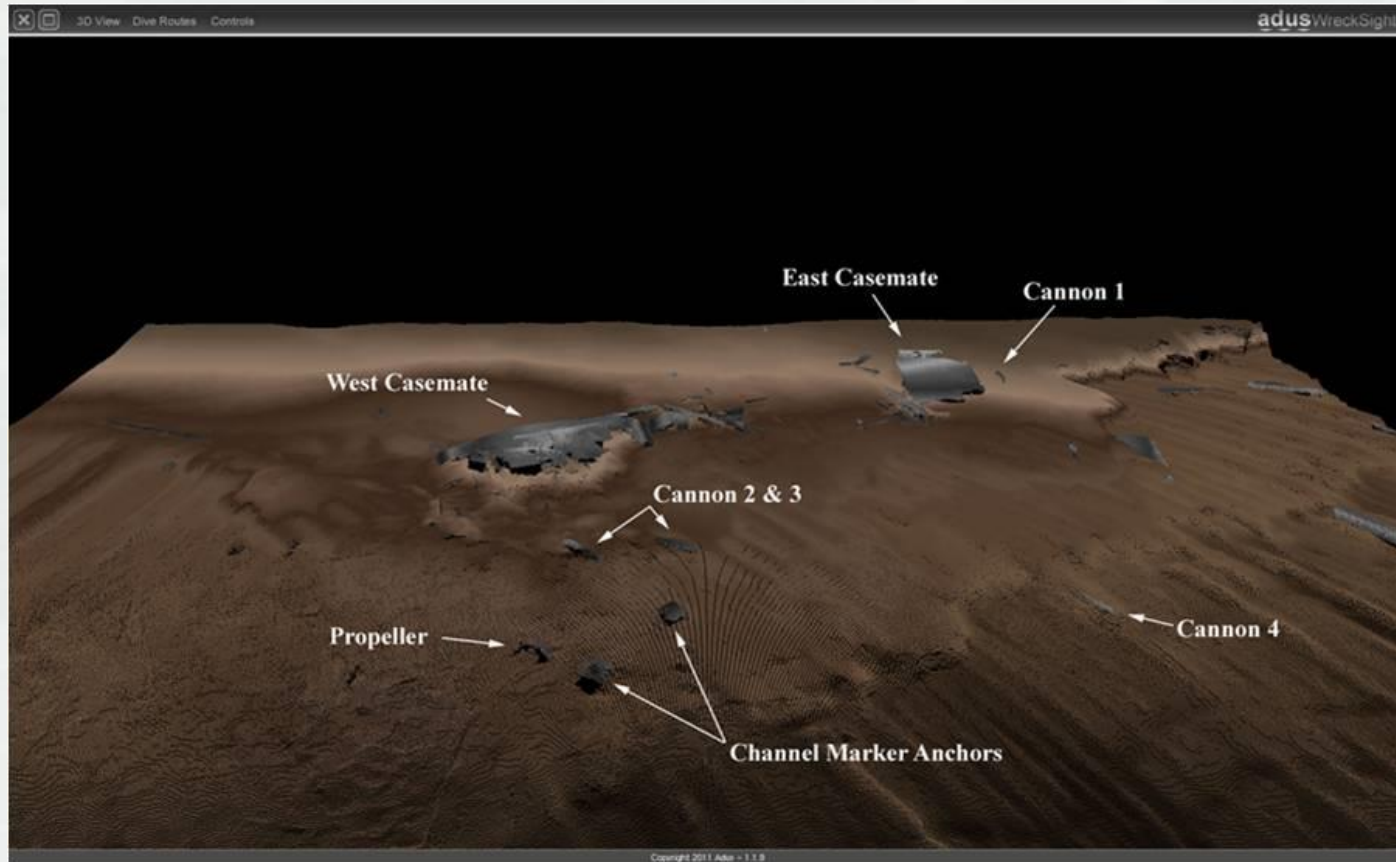


BUILDING STRONG®



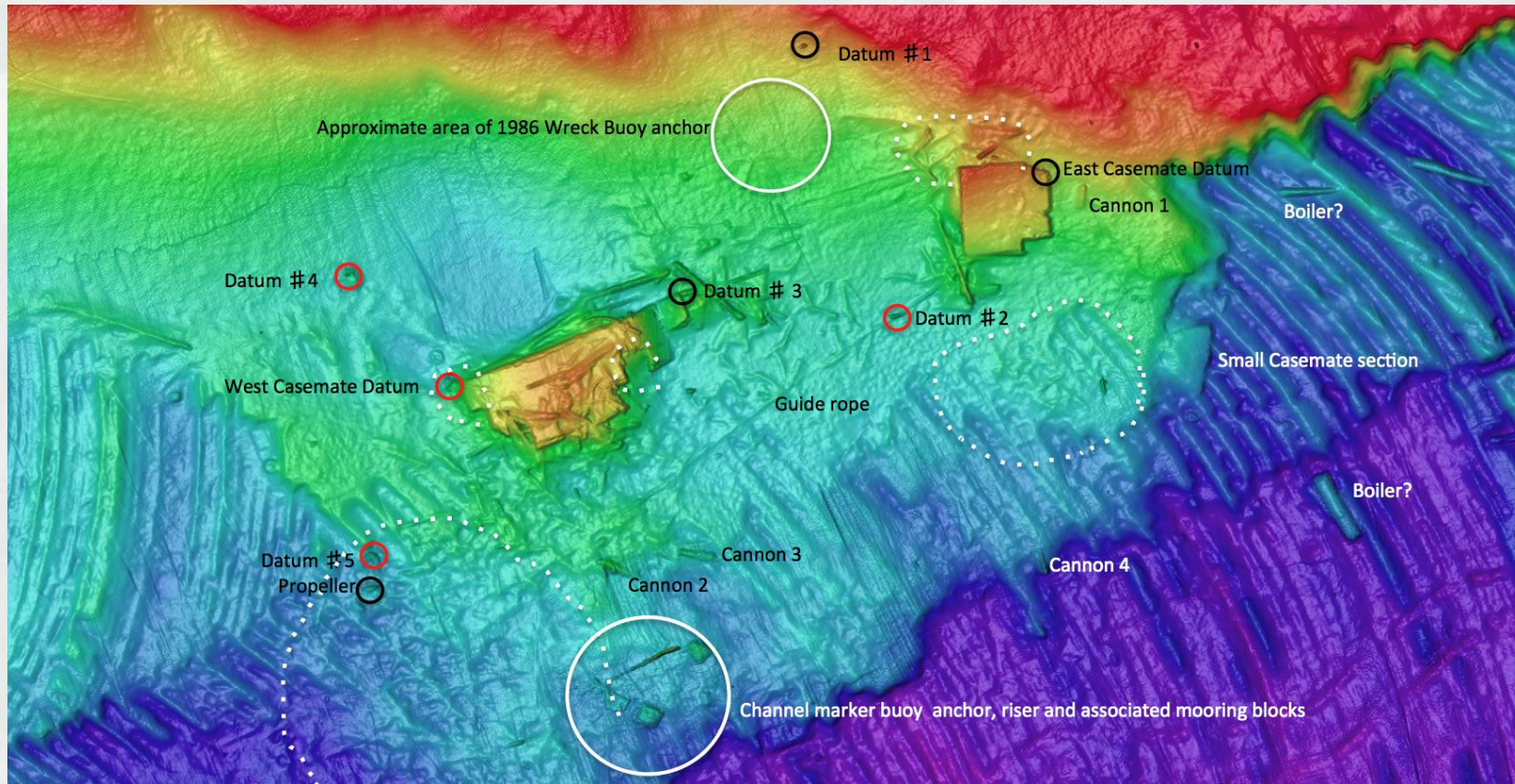
BUILDING STRONG®

WreckView 3-D Image of CSS Georgia Site Looking North



BUILDING STRONG®

ADUS Survey Wreck Site 2-D Plan



BUILDING STRONG®

Barge on CSS *Georgia* Site 2014



BUILDING STRONG®



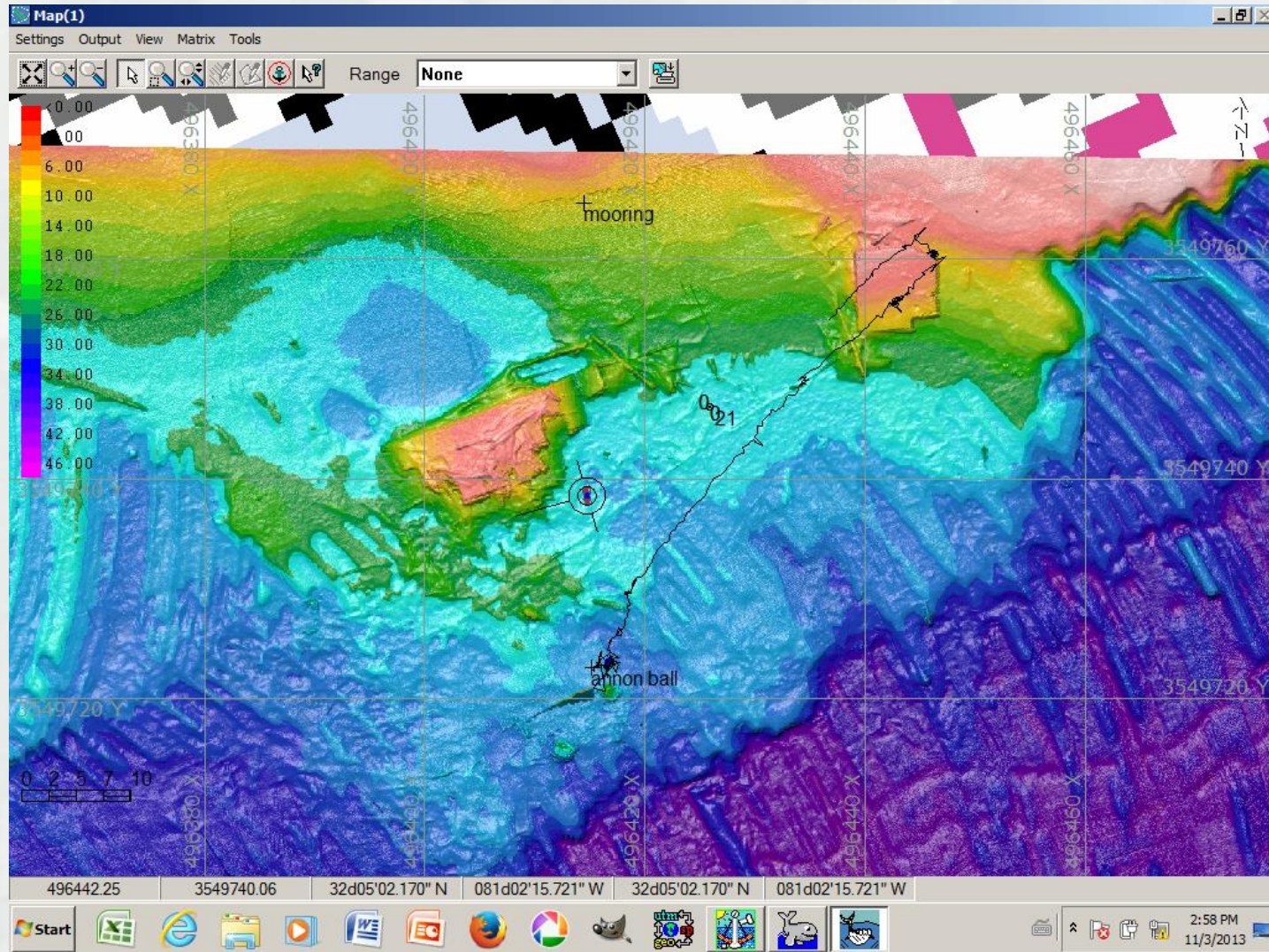
BUILDING STRONG®

MDSU Diver With USBL Transducer



BUILDING STRONG®

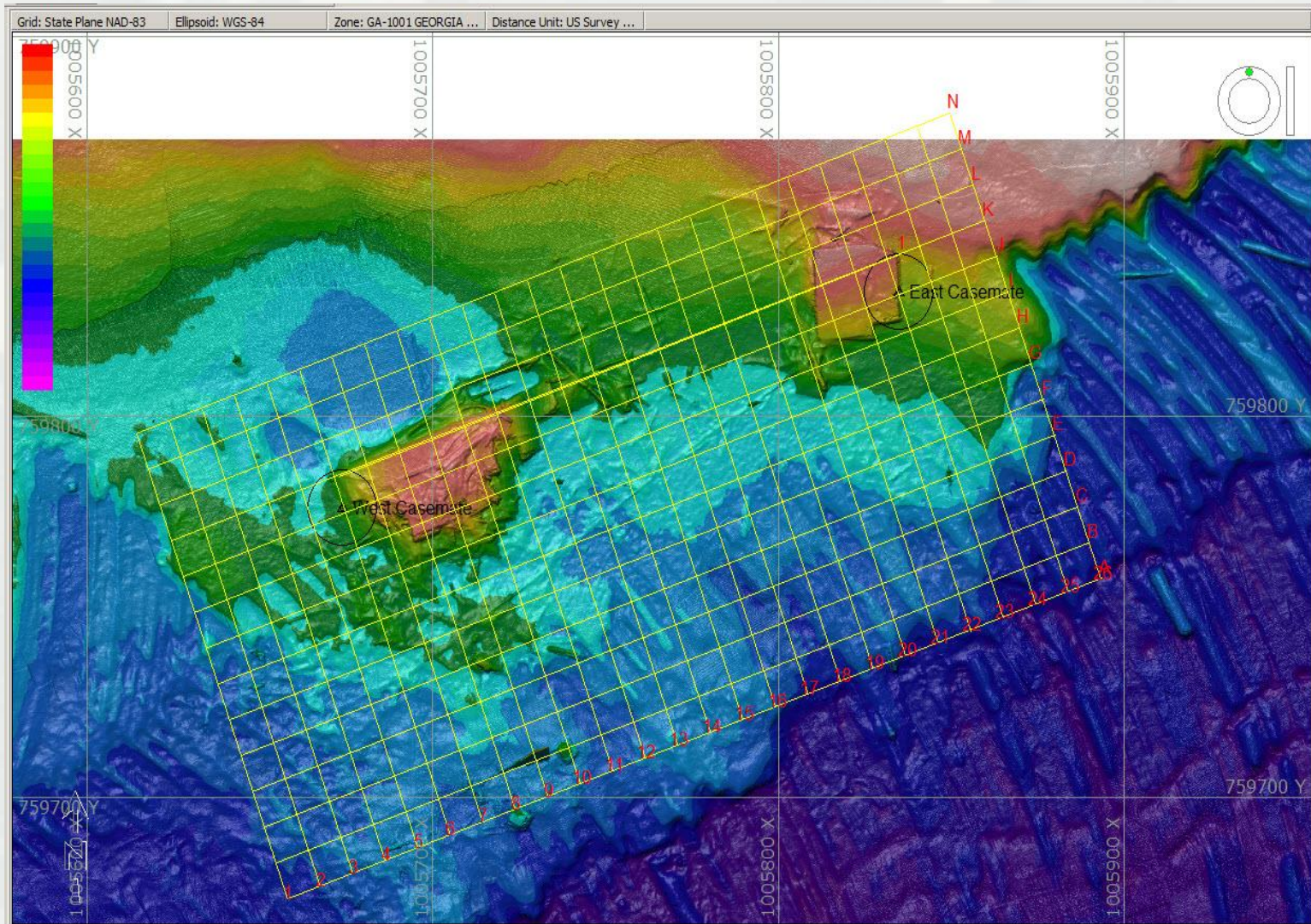
Tracking Diver Over Site Map in Hypack





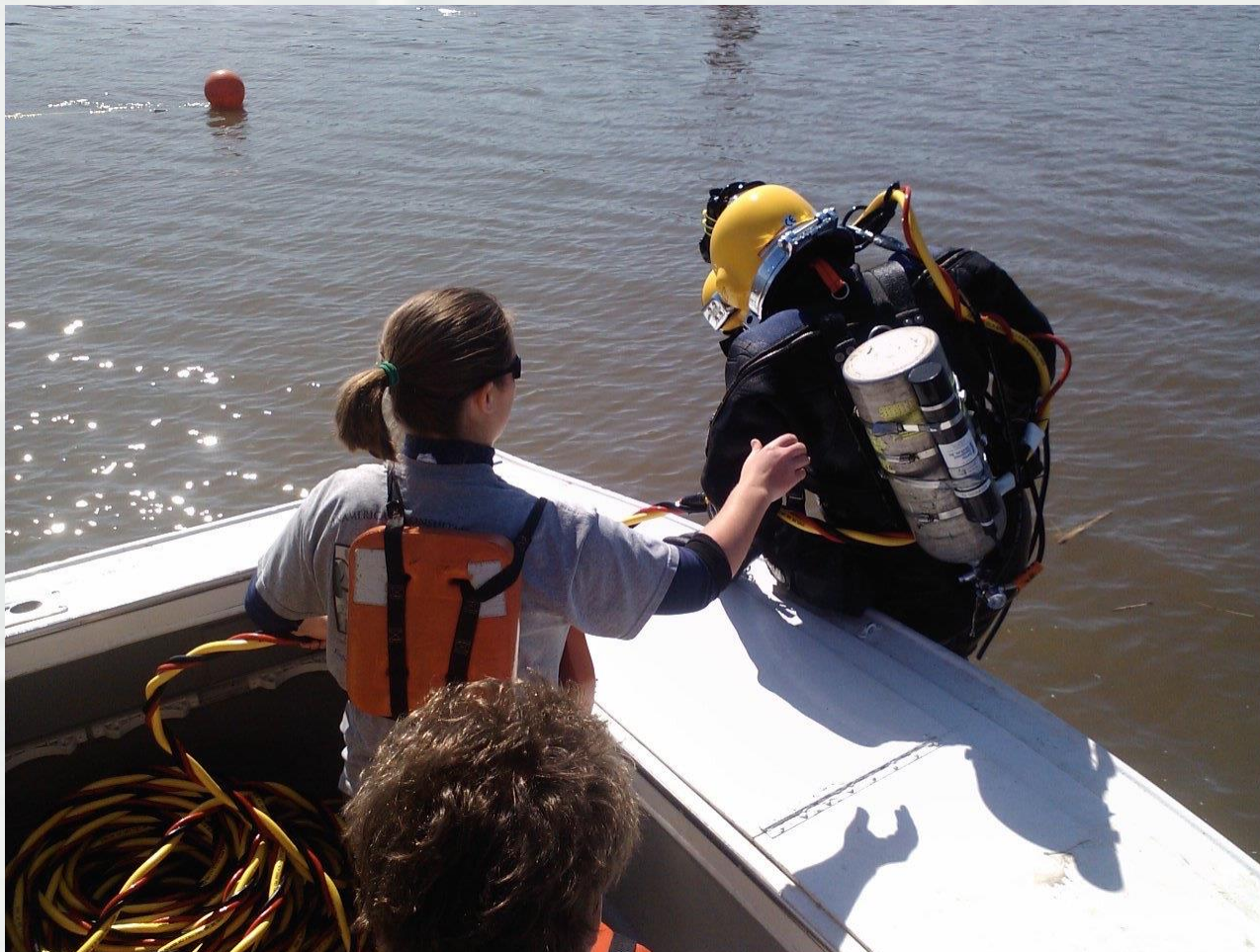
BUILDING STRONG®

2015 Electronic Grid Established on ADUS Site Plan in Hypack



BUILDING STRONG®

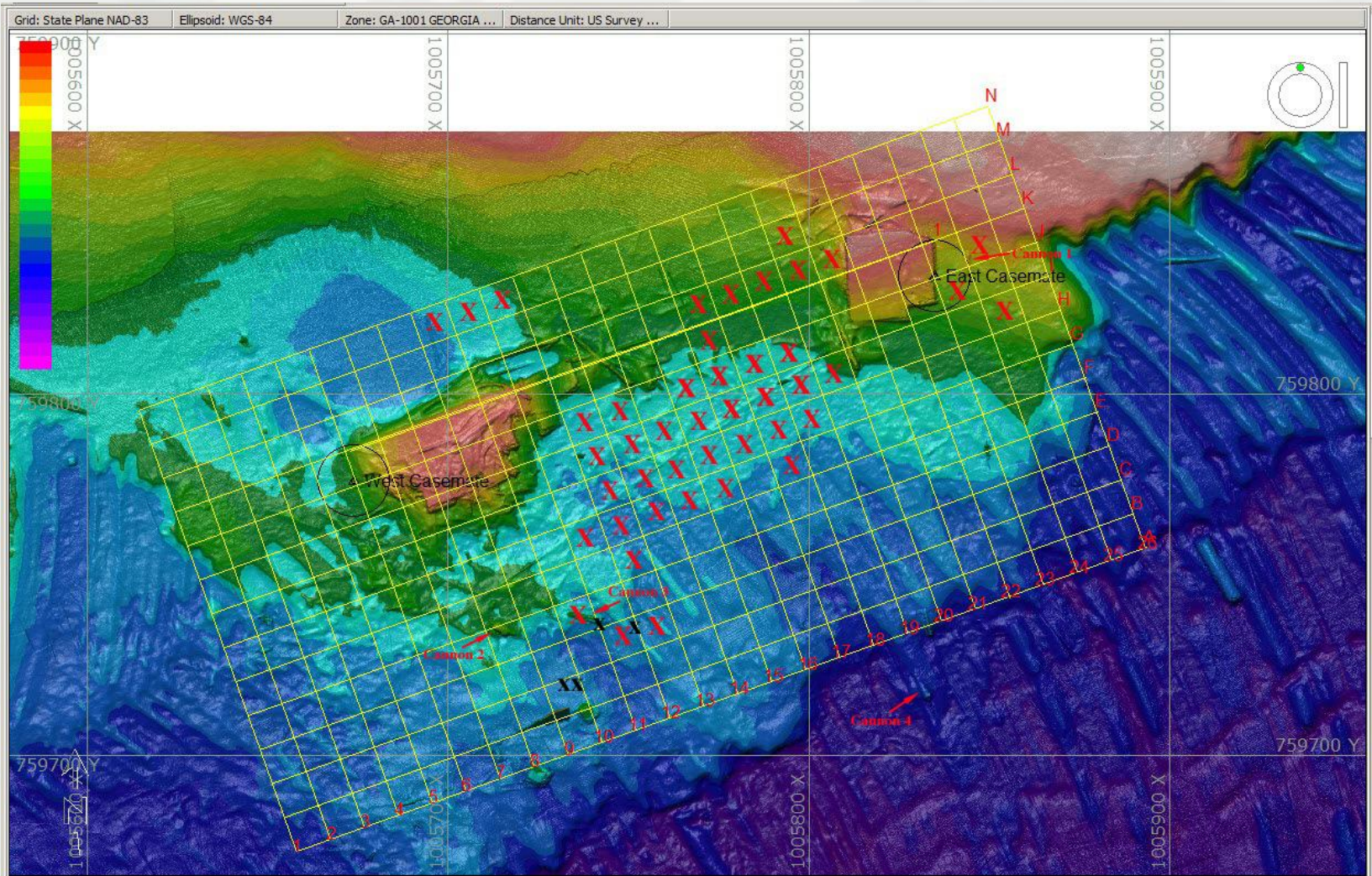
USBL Transducer on Diver



BUILDING STRONG®



BUILDING STRONG®

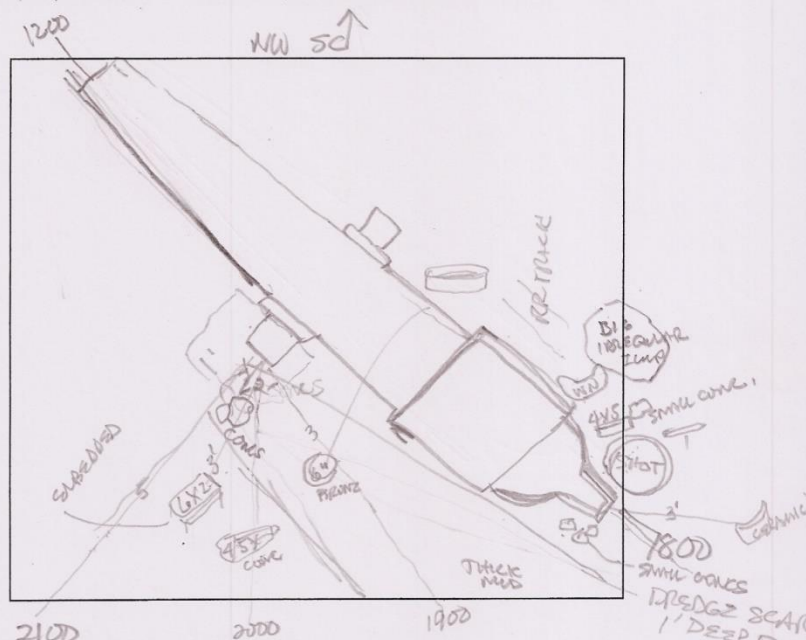


BUILDING STRONG®

CSS Georgia Data Recovery Project 2015

Artifact Recovery Form

Grid Square 10-D-6 Date 25 MARCH 15 Recorder GRUNTS
 Dive # 06 Tide HIGH/SLACK Depth -50'
 Diver TJCP Sediment THICK SILT/CLAY



Comments DIFF IN 13:20 - SLACK WATER SOFT MUD &
THICKER MUD 0900 - 1800 QUANT OF SP-6\"/>

Assigned Artifact Tags RANDOM CONCS, 10\"/>

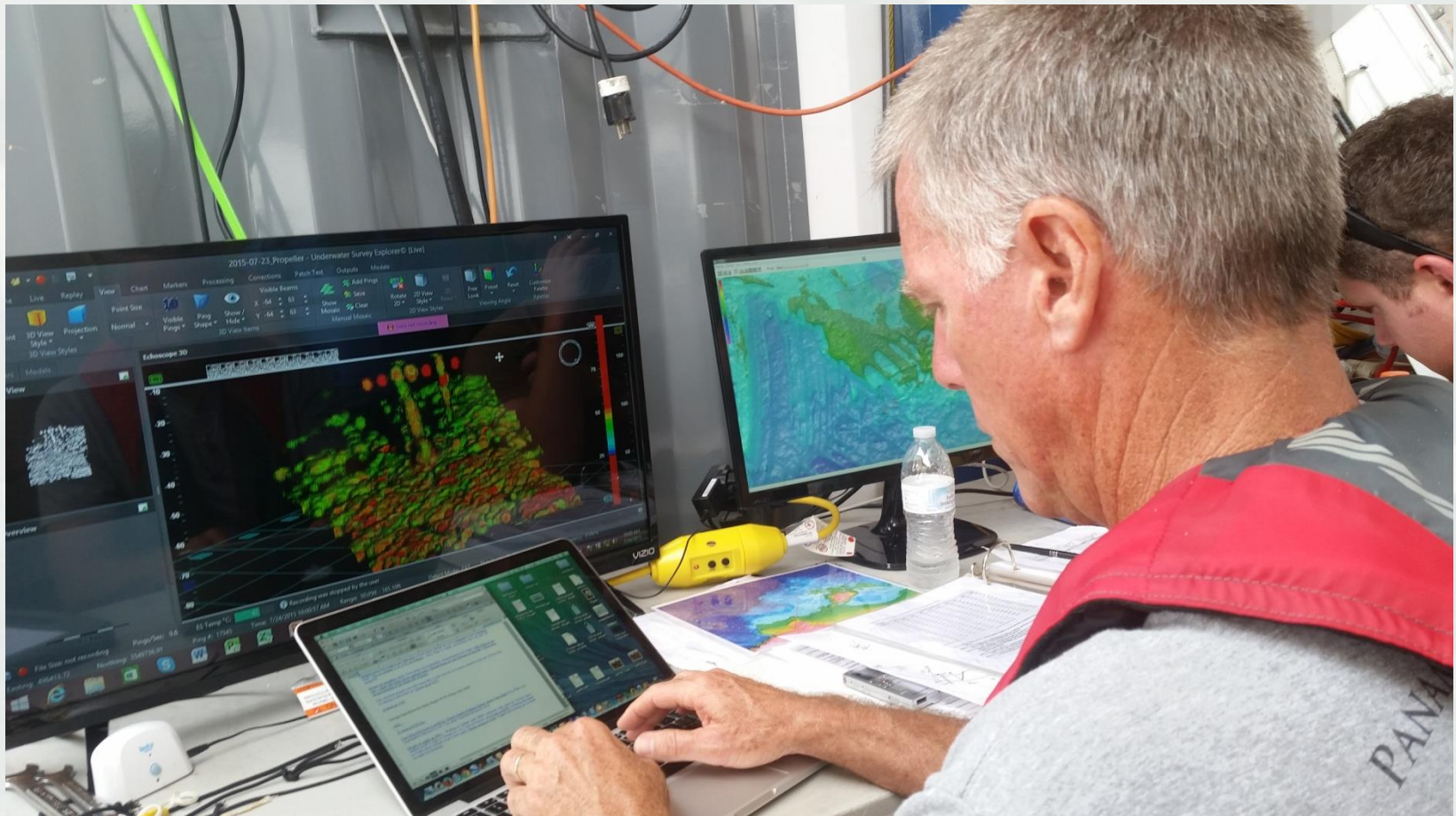


BUILDING STRONG®



BUILDING STRONG®

Coordinating USBL Positioning with MDSU-2 Divers



BUILDING STRONG®



BUILDING STRONG®

Systematic Mechanized Recovery



BUILDING STRONG®



BUILDING STRONG®



THANK YOU



BUILDING STRONG®